

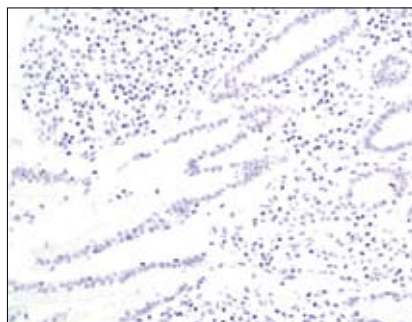
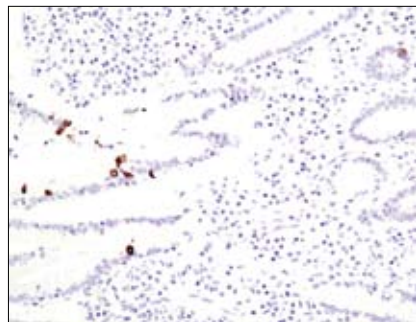
# Cleaved Caspase-8 (Asp391) Blocking Peptide

✓ 100 µg  
(100 sections)

**Orders** ■ 877-616-CELL (2355)  
orders@cellsignal.com  
**Support** ■ 877-678-TECH (8324)  
info@cellsignal.com  
**Web** ■ www.cellsignal.com

New 10/07

This product is for *in vitro* research use only and is not intended for use in humans or animals.



Immunohistochemical analysis of paraffin-embedded human colon using Cleaved Caspase-8 (Asp391) (18C8) RmAb #9496 in the presence of control peptide (left) or Cleaved Caspase-8 (Asp391) Blocking Peptide (right).

**Description:** This peptide is used to block Cleaved Caspase-8 (Asp391) (18C8) Rabbit mAb #9496 reactivity in immunohistochemistry protocols.

**Background:** Apoptosis induced through CD95 receptor (Fas/APO-1) and tumor necrosis factor receptor 1 (TNFR1) activates caspase-8 and leads to the release of the caspase-8 active fragments, p18 and p10 (1-3). Activated caspase-8 cleaves and activates downstream effector caspases such as caspase-1, -3, -6 and -7. Caspase-3 ultimately elicits the morphological hallmarks of apoptosis, including DNA fragmentation and cell shrinkage.

**Quality Control:** The quality of the peptide was evaluated by reversed-phase HPLC and by mass spectrometry. The peptide blocks Cleaved Caspase-8 (Asp391) (18C8) Rabbit mAb #9496 by immunohistochemistry.

**Directions For Use:** For immunohistochemistry, add twice the volume of peptide as volume of antibody used in 100 µl total volume. Incubate for a minimum of 30 minutes prior to adding the entire volume to the slide. Recommended antibody dilutions can be found on the relevant product data sheet.

**Background References:**

- (1) Muzio, M. et al. (1996) *Cell* 85, 817-827.
- (2) Boldin, M.P. et al. (1996) *Cell* 85, 803-815.
- (3) Fernandes-Alnemri, T. et al. (1996) *Proc. Natl. Acad. Sci. USA* 93, 7464-7469.

**Storage:** Supplied in 20 mM potassium phosphate (pH 7.0), 50 mM NaCl, 0.1 mM EDTA, 1 mg/ml BSA and 5% glycerol. Store at -20°C.

**Companion Products:**

Cleaved Caspase-8 (Asp391) (18C8) Rabbit mAb #9496