

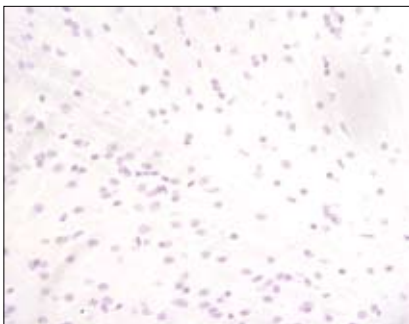
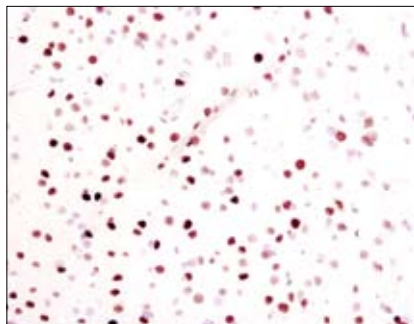
EGR1 Blocking Peptide

✓ 100 µg

Orders ■ 877-616-CELL (2355)
orders@cellsignal.com
Support ■ 877-678-TECH (8324)
info@cellsignal.com
Web ■ www.cellsignal.com

New 03/07

This product is for *in vitro* research use only and is not intended for use in humans or animals.



Immunohistochemical analysis of paraffin-embedded mouse brain using EGR1 (15F7) Rabbit mAb #4153 in the presence of control peptide (left) or EGR1 Blocking Peptide (right).

Description: This peptide is used to block EGR1 (15F7) Rabbit mAb #4153 reactivity.

Background: EGR family members are transcriptional factors that contain three repetitive zinc finger DNA binding domains which bind to EGR response elements (ER) to regulate target gene expression (1). The expression of EGR family members is induced by growth factors, with EGR1 expression being induced by NGF (1,2). Increased EGR1 expression activates transcription of other signaling molecules, including CDK5 and tyrosine hydroxylase, and exerts long term effects on neural cell growth and differentiation (2,3).

Quality Control: The quality of the peptide was evaluated by reversed-phase HPLC and by mass spectrometry. The peptide blocks EGR1 (15F7) Rabbit mAb #4153 by immunohistochemistry.

Directions for Use: For immunohistochemistry, add twice the volume of peptide as volume of antibody used in 100 µl total volume. Incubate for a minimum of 30 minutes prior to adding the entire volume to the slide. Recommended antibody dilutions can be found on the product data sheet.

Applications: Use as a blocking reagent to evaluate the specificity of antibody reactivity in immunohistochemistry protocols.

Background References:

- (1) O'Donovan, K.J. et al. (1999) *Trends Neurosci.* 22, 167–173.
- (2) Harada, T. et al. (2001) *Nat. Cell Biol.* 3, 453–459.
- (3) Papanikolaou, N.A. and Sabban, E.L. (2000) *J. Biol. Chem.* 275, 26683–26689.

Storage: Supplied in 20 mM potassium phosphate (pH 7.0), 50 mM NaCl, 0.1 mM EDTA, 1 mg/ml BSA and 5% glycerol. Store at -20°C.

Companion Products:
EGR1 (15F7) Rabbit mAb #4153