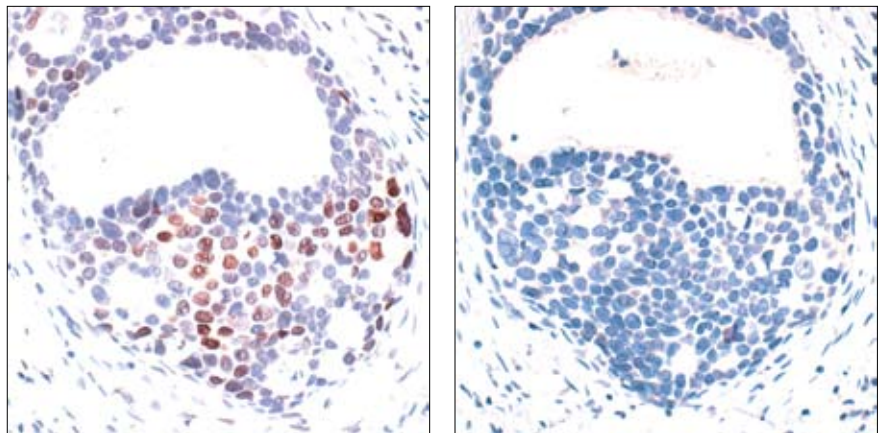


Phospho-c-Jun (Ser73) Blocking Peptide

100 µg
 (10 Western mini-blot)

Orders ■ 877-616-CELL (2355)
 orders@cellsignal.com
Support ■ 877-678-TECH (8324)
 info@cellsignal.com
Web ■ www.cellsignal.com

rev. 09/10/07



Immunohistochemical analysis of paraffin-embedded human breast carcinoma, using Phospho-c-Jun (Ser73) Antibody #9164 in the presence of control peptide (left) or Phospho-c-Jun (Ser73) Blocking Peptide (right).

Storage: Supplied in 20 mM potassium phosphate (pH 7.0), 50 mM NaCl, 0.1 mM EDTA, 1 mg/ml BSA and 5% glycerol. Store at -20°C.

Companion Products:
 Phospho-c-Jun (Ser73) Antibody #9164
 Anti-rabbit IgG, HRP-linked Antibody #7074
 Prestained Protein Marker, Broad Range (Premixed Format) #7720
 Biotinylated Protein Ladder #7727
 20X LumiGLO® Reagent and 20X Peroxide #7003

Background: c-Jun is a component of the transcription factor AP-1, which binds and activates transcription at TRE/AP-1 elements. The transcriptional activity of c-Jun is regulated by phosphorylation at Ser63 and Ser73 (1,2). Extracellular signals including growth factors, transforming oncoproteins and UV irradiation stimulate phosphorylation of c-Jun at Ser63/73 and activate c-Jun-dependent transcription. Mutation of Ser63/73 renders c-Jun nonresponsive to mitogenic and stress-induced signaling pathways. The MAP kinase homologue SAPK/JNK binds to the amino-terminal region of c-Jun and phosphorylates c-Jun at Ser63/73. In addition, the activity of SAPK/JNK is stimulated by the same signals that activate c-Jun (3,4).

Description: This peptide is used to block Phospho-c-Jun (Ser73) Antibody #9164 reactivity.

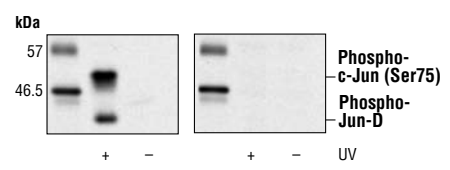
Quality Control: The quality of the peptide was evaluated by reversed-phase HPLC and by mass spectrometry. The peptide blocks Phospho-c-Jun (Ser73) Antibody #9164 signal completely in Western blotting and immunohistochemistry.

Applications: Use as a blocking reagent to evaluate the specificity of antibody reactivity in Western immunoblotting and immunohistochemistry protocols.

Directions for Use: For immunohistochemistry, add twice the volume of peptide as volume of antibody used in 100 µl total volume. Incubate for a minimum of 30 minutes prior to adding the entire volume to the slide. Recommended antibody dilutions can be found on the relevant product data sheet.

For Western immunoblotting, add 10 µl of antibody and 10 µl of blocking peptide to 10 ml of antibody dilution buffer, and incubate at room temperature for 30 minutes before allowing to react with the blot.

Background References:
 (1) Binetruy, B. et al. (1991) *Nature* 351, 122–127.
 (2) Smeal, T. et al. (1991) *Nature* 354, 494–496.
 (3) Derijard, B. et al. (1994) *Cell* 76, 1025–1037.
 (4) Kyriakis, J.M. et al. (1994) *Nature* 369, 156–160.



Western blot analysis of lysates from NIH/3T3 cells treated and untreated with UV light. Both membranes were probed with Phospho-c-Jun (Ser73) Antibody #9164 (left) and the same antibody preincubated with antigen-specific blocking peptide (right).

