

β -Tubulin Blocking Peptide

✓ 100 μ g

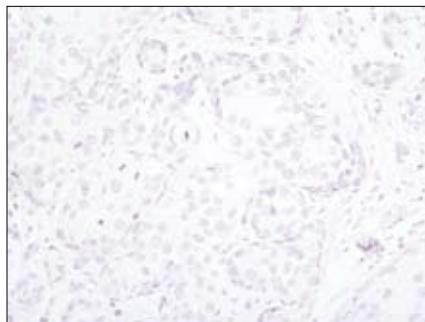
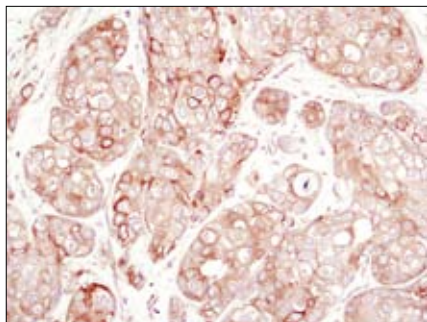
Orders ■ 877-616-CELL (2355)
orders@cellsignal.com

Support ■ 877-678-TECH (8324)
info@cellsignal.com

Web ■ www.cellsignal.com

rev. 09/24/07

This product is for *in vitro* research use only and is not intended for use in humans or animals.



Immunohistochemical analysis of paraffin-embedded human breast carcinoma using β -Tubulin (9F3) Rabbit mAb #2128 in the presence of control peptide (left) or β -Tubulin Blocking Peptide (right).

Applications: Use as a blocking reagent to evaluate the specificity of antibody reactivity in immunohistochemistry protocols.

Description: This peptide is used to block β -Tubulin (9F3) Rabbit mAb #2128 reactivity.

Background: The cytoskeleton consists of three types of cytosolic fibers: microtubules, microfilaments (actin filaments), and intermediate filaments. Globular tubulin subunits comprise the microtubule building block, with α/β -tubulin heterodimers forming the tubulin subunit common to all eukaryotic cells. γ -tubulin is necessary to nucleate polymerization of tubulin subunits to form microtubule polymers. Many cell movements are mediated by microtubule action, including the beating of cilia and flagella, cytoplasmic transport of membrane vesicles, chromosome alignment during meiosis/mitosis, and nerve-cell axon migration. These movements result from competitive microtubule polymerization and depolymerization or through the actions of microtubule motor proteins (1).

Quality Control: The quality of the peptide was evaluated by reversed-phase HPLC and by mass spectrometry. The peptide blocks β -Tubulin (9F3) Rabbit mAb #2128 by immunohistochemistry.

Directions for Use: For immunohistochemistry, add twice the volume of peptide as volume of antibody used in 100 μ l total volume. Incubate for a minimum of 30 minutes prior to adding the entire volume to the slide. Recommended antibody dilutions can be found on the product data sheet.

Background References:

- (1) Westermann, S. and Weber, K. (2003) *Nat. Rev. Mol. Cell Biol.* 4, 938–947.

Storage: Supplied in 20 mM potassium phosphate (pH 7.0), 50 mM NaCl, 0.1 mM EDTA, 1 mg/ml BSA and 5% glycerol. Store at -20°C.

Companion Products:

β -Tubulin (9F3) Rabbit mAb #2128

β -Tubulin Antibody #2146