

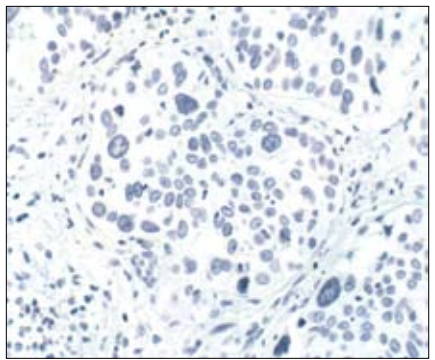
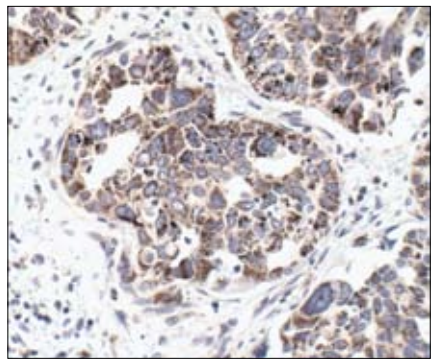
Cytochrome c Blocking Peptide

✓ 100 µg
(100 sections)

Orders ■ 877-616-CELL (2355)
orders@cellsignal.com
Support ■ 877-678-TECH (8324)
info@cellsignal.com
Web ■ www.cellsignal.com

New 04/06

This product is for *in vitro* research use only and is not intended for use in humans or animals.



Immunohistochemical analysis of paraffin-embedded human lung carcinoma, using Cytochrome c (136F3) Rabbit mAb #4280 in the presence of control peptide (left) or Cytochrome c Blocking Peptide (right).

Background: Cytochrome c is a well conserved electron-transport protein and is part of the respiratory chain localized to mitochondrial intermembrane space (1). Upon apoptotic stimulation, cytochrome c released from mitochondria associates with procaspase-9 (47 kDa)/Apaf 1. This complex processes caspase-9 from inactive proenzyme to its active form (2). This event further triggers caspase-3 activation and eventually leads to apoptosis (3).

Description: This peptide is used to block Cytochrome c (136F3) Rabbit mAb # 4280 reactivity. Use as a blocking reagent to evaluate the specificity of antibody reactivity in immunohistochemistry protocols.

Quality Control: The quality of the peptide was evaluated by reversed-phase HPLC and by mass spectrometry. The peptide blocks Cytochrome c (136F3) Rabbit mAb # 4280 by immunohistochemistry.

Applications: Use as a blocking reagent to evaluate the specificity of antibody reactivity in immunohistochemistry protocols.

Directions for Use: For immunohistochemistry, add twice the volume of peptide as volume of antibody used in 100 µl total volume. Incubate for a minimum of 30 minutes prior to adding the entire volume to the slide. Recommended antibody dilutions can be found on the relevant product data sheet.

Background References:

- (1) Schagger H.H. et al. (2002) *Biochem. Biophys. Acta.* 1555, 154–159.
- (2) Li, P. et al. (1997) *Cell* 91, 479–489
- (3) Liu, X. et al. (1996) *Cell* 86, 147–157.

Storage: Supplied in 20 mM potassium phosphate (pH 7.0), 50 mM NaCl, 0.1 mM EDTA, 1 mg/ml BSA and 5% glycerol. Store at -20°C.

Companion Products:
Cytochrome c (136F3) Rabbit mAb #4280