

FoxD3 (D20A9) Rabbit mAb

✓ 100 µl
(10 western blots)

Orders ■ 877-616-CELL (2355)
orders@cellsignal.com
Support ■ 877-678-TECH (8324)
info@cellsignal.com
Web ■ www.cellsignal.com

rev. 09/13/10

This product is intended for research purposes only. This product is not intended to be used for therapeutic or diagnostic purposes in humans or animals.

Applications	Species Cross-Reactivity*	Molecular Wt.	Isotype
W Transfected	H	60 kDa	Rabbit IgG**

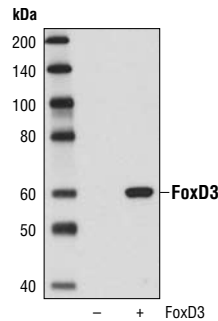
Background: FoxD3 is a member of the Forkhead Box family and is characterized by a winged-helix DNA-binding structure and the important role it plays in embryonic development (1). This transcriptional regulator is required for the maintenance of pluripotency in the pre-implantation and peri-implantation stages of mouse embryonic development (2) and is also required for trophoblast formation (3). FoxD3 is required for the maintenance of the mammalian neural crest; FoxD3^{-/-} mouse embryos fail around the time of implantation with loss of neural crest-derived structures (4). FoxD3 also forms a regulatory network with Oct-4 and NANOG to maintain the pluripotency of ES cells (5,6).

Specificity/Sensitivity: FoxD3 (D20A9) Rabbit mAb detects transfected levels of total FoxD3 protein.

Source/Purification: Monoclonal antibody is produced by immunizing animals with a synthetic peptide corresponding to residues at the C-terminus of human FoxD3.

Background References:

- (1) Sutton, J. et al. (1996) *J Biol Chem* 271, 23126–33.
- (2) Hanna, L.A. et al. (2002) *Genes Dev* 16, 2650–61.
- (3) Tompers, D.M. et al. (2005) *Dev Biol* 285, 126–37.
- (4) Teng, L. et al. (2008) *Development* 135, 1615–24.
- (5) Pan, G. et al. (2006) *FASEB J* 20, 1730–2.
- (6) Liu, Y. and Labosky, P.A. (2008) *Stem Cells, Epub ahead of print.*



Western blot analysis of extracts from HeLa cells, untransfected or transfected with FoxD3, using FoxD3 (D20A9) Rabbit mAb.

Entrez-Gene ID #27022
Swiss-Prot Acc. #Q9UJU5

Storage: Supplied in 10 mM sodium HEPES (pH 7.5), 150 mM NaCl, 100 µg/ml BSA, 50% glycerol and less than 0.02% sodium azide. Store at -20°C. Do not aliquot the antibody.

*Species cross-reactivity is determined by western blot.

**Anti-rabbit secondary antibodies must be used to detect this antibody.

Recommended Antibody Dilutions:

Western blotting 1:1000

For application specific protocols please see the web page for this product at www.cellsignal.com.

Please visit www.cellsignal.com for a complete listing of recommended companion products.

IMPORTANT: For western blots, incubate membrane with diluted antibody in 5% w/v BSA, 1X TBS, 0.1% Tween-20 at 4°C with gentle shaking, overnight.

Applications Key: W—Western IP—Immunoprecipitation IHC—Immunohistochemistry ChIP—Chromatin Immunoprecipitation IF—Immunofluorescence F—Flow cytometry E-P—ELISA-Peptide
Species Cross-Reactivity Key: H—human M—mouse R—rat Hm—hamster Mk—monkey Mi—mink C—chicken Dm—D. melanogaster X—Xenopus Z—zebrafish B—bovine
Dg—dog Pg—pig Sc—S. cerevisiae Ce—C. elegans Hr—horse All—all species expected Species enclosed in parentheses are predicted to react based on 100% homology.