

# Tug Antibody

100 µl  
(10 western blots)

**Orders** ■ 877-616-CELL (2355)  
orders@cellsignaling.com

**Support** ■ 877-678-TECH (8324)  
info@cellsignaling.com

**Web** ■ www.cellsignaling.com

rev. 08/04/10

This product is intended for research purposes only. This product is not intended to be used for therapeutic or diagnostic purposes in humans or animals.

Applications	Species Cross-Reactivity*	Molecular Wt.	Source
W, IP Endogenous	H, M, R, Mk	70-75 kDa	Rabbit**

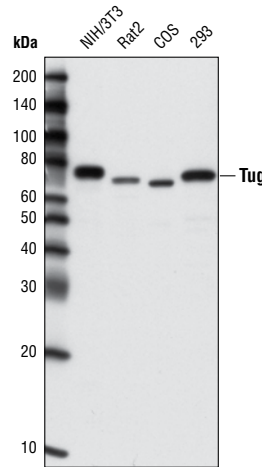
**Background:** Tug (Tether containing UBX domain for GLUT4), also known as ASPL, ASPSCR1, RCC17, UBXD9, UBXN9, was first identified as a chromosomal translocation partner for TFE3 in patients with Alveolar soft part sarcoma (1) and contains an UBX-like domain in its C-terminal region. Tug is found to tether GLUT4 in intracellular vesicles and to release GLUT4 for cell surface translocation upon insulin stimulation (2). Stable Tug depletion or expression of a dominant negative form stimulates GLUT4 redistribution (3).

**Specificity/Sensitivity:** Tug Antibody detects endogenous levels of total Tug protein.

**Source/Purification:** Polyclonal antibodies are produced by immunizing animals with a synthetic peptide corresponding to amino acids around residue Val542 of human Tug. Antibodies are purified by Protein A and peptide affinity chromatography.

#### Background References:

- (1) Ladanyi, M. et al. (2001) *Oncogene* 20, 48–57.
- (2) Bogan, J.S. et al. (2003) *Nature* 425, 727–33.
- (3) Yu, C. et al. (2007) *J Biol Chem* 282, 7710–22.



Western blot analysis of extracts from various cell lines using Tug Antibody.

Entrez-Gene ID #79058  
Swiss-Prot Acc. #Q9BZE9

**Storage:** Supplied in 10 mM sodium HEPES (pH 7.5), 150 mM NaCl, 100 µg/ml BSA and 50% glycerol. Store at -20°C. Do not aliquot the antibody.

\*Species cross-reactivity is determined by Western blot.

\*\*Anti-rabbit secondary antibodies must be used to detect this antibody.

#### Recommended Antibody Dilutions:

Western Blotting	1:1000
Immunoprecipitation	1:50

For application specific protocols please see the web page for this product at [www.cellsignaling.com](http://www.cellsignaling.com).

Please visit [www.cellsignaling.com](http://www.cellsignaling.com) for a complete listing of recommended companion products.

**IMPORTANT:** For western blots, incubate membrane with diluted antibody in 5% w/v BSA, 1X TBS, 0.1% Tween-20 at 4°C with gentle shaking, overnight.