

#2065 Store at -20°C

# Ribosomal Protein L26 Antibody



✓ 100 µl  
(10 western blots)

**Orders** ■ 877-616-CELL (2355)  
orders@cellsignal.com  
**Support** ■ 877-678-TECH (8324)  
info@cellsignal.com  
**Web** ■ www.cellsignal.com

rev 03/04/10

This product is intended for research purposes only. This product is not intended to be used for therapeutic or diagnostic purposes in humans or animals.

Entrez-Gene ID #6154  
Swiss-Prot Acc. #P61254

Applications	Species Cross-Reactivity*	Molecular Wt.	Source
W Endogenous	H, M, R, Mk	17 kDa	Rabbit**

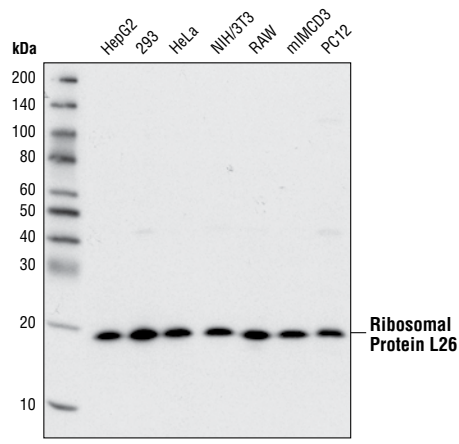
**Background:** Ribosomal protein L26 (RPL26) is a component of the 60S ribosomal subunit and is involved in translation (1,2). It was shown that RPL26 increases the translation of p53 mRNA by binding to its 5' untranslated region (UTR) after DNA damage. Studies found that overexpression of RPL26 enhances the binding of p53 mRNA to the ribosomes and increases p53 translation. Overexpression of RPL26 also induces cell-cycle arrest at G1 phase and increases radiation-stimulated apoptosis (2).

**Specificity/Sensitivity:** Ribosomal Protein L26 Antibody detects endogenous levels of total ribosomal protein L26.

**Source/Purification:** Polyclonal antibodies are produced by immunizing animals with a synthetic peptide corresponding to the sequence of human ribosomal protein L26. Antibodies are purified by protein A and peptide affinity chromatography.

**Background References:**

- (1) Odintsova, T.I. et al. (2003) *J Protein Chem* 22, 249–58.
- (2) Takagi, M. et al. (2005) *Cell* 123, 49–63.



Western blot analysis of extracts from various cell types using Ribosomal Protein L26 Antibody.

**Storage:** Supplied in 10 mM sodium HEPES (pH 7.5), 150 mM NaCl, 100 µg/ml BSA and 50% glycerol. Store at -20°C. Do not aliquot the antibody.

\*Species cross-reactivity is determined by western blot.

\*\*Anti-rabbit secondary antibodies must be used to detect this antibody.

**Recommended Antibody Dilutions:**

Western blotting 1:1000

For application specific protocols please see the web page for this product at [www.cellsignal.com](http://www.cellsignal.com).

Please visit [www.cellsignal.com](http://www.cellsignal.com) for a complete listing of recommended companion products.

**IMPORTANT: For western blots, incubate membrane with diluted antibody in 5% w/v BSA, 1X TBS, 0.1% Tween-20 at 4°C with gentle shaking, overnight.**

**Applications Key:** W—Western IP—Immunoprecipitation IHC—Immunohistochemistry ChIP—Chromatin Immunoprecipitation IF—Immunofluorescence F—Flow cytometry E-P—ELISA-Peptide

**Species Cross-Reactivity Key:** H—human M—mouse R—rat Hm—hamster Mk—monkey Mi—mink C—chicken Dm—D. melanogaster X—Xenopus Z—zebrafish B—bovine

Dg—dog Pg—pig Sc—S. cerevisiae Ce—C. elegans Hr—horse All—all species expected Species enclosed in parentheses are predicted to react based on 100% homology.