

TMP21 Antibody

✓ 100 µl
(10 western blots)

Orders ■ 877-616-CELL (2355)
orders@cellsignal.com
Support ■ 877-678-TECH (8324)
info@cellsignal.com
Web ■ www.cellsignal.com

rev. 06/09/10

This product is intended for research purposes only. This product is not intended to be used for therapeutic or diagnostic purposes in humans or animals.

Entrez-Gene ID #10972
Swiss-Prot Acc. #P49755

Applications	Species Cross-Reactivity*	Molecular Wt.	Source
W Endogenous	H, M, Mk, (R)	19 kDa	Rabbit**

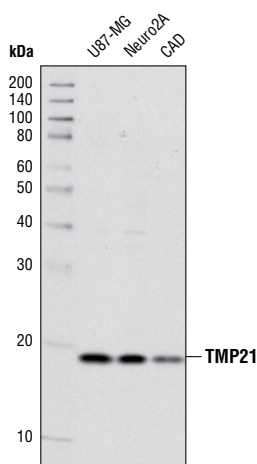
Background: TMP21, a type I transmembrane protein, is a member of the p24 cargo protein family, which is highly enriched in the ER, the Golgi and coat protein (COP) I and II transport vesicles (1,2). TMP21 is involved in protein transport and vesicular targeting. In particular, TMP21 influences APP trafficking by stabilizing nascent APP. The absence of TMP21 leads to enhanced maturation and cell surface accumulation of APP (3). In addition, TMP21 is a non-essential component of the γ -secretase complex with the potential to modulate γ -secretase mediated cleavage and A β production without having an effect on ϵ -secretase activity (4).

Specificity/Sensitivity: TMP21 Antibody detects endogenous levels of total TMP21 protein.

Source/Purification: Polyclonal antibodies are produced by immunizing animals with a synthetic peptide corresponding to residues of human TMP21. Antibodies are purified by protein A and peptide affinity chromatography.

Background References:

- (1) Blum, R. et al. (1996) *J Biol Chem* 271, 17183–9.
- (2) Blum, R. et al. (1999) *J Cell Sci* 112 (Pt 4), 537–48.
- (3) Vetrivel, K.S. et al. (2007) *Mol Neurodegener* 2, 4.
- (4) Chen, F. et al. (2006) *Nature* 440, 1208–12.



Western blot analysis of extracts from U87-MG, Neuro2A and CAD cells using TMP21 Antibody.

Storage: Supplied in 10 mM sodium HEPES (pH 7.5), 150 mM NaCl, 100 µg/ml BSA and 50% glycerol. Store at -20°C. Do not aliquot the antibody.

*Species cross-reactivity is determined by western blot.

**Anti-rabbit secondary antibodies must be used to detect this antibody.

Recommended Antibody Dilutions:

Western blotting 1:1000

For application specific protocols please see the web page for this product at www.cellsignal.com.

Please visit www.cellsignal.com for a complete listing of recommended companion products.

IMPORTANT: For western blots, incubate membrane with diluted antibody in 5% w/v BSA, 1X TBS, 0.1% Tween-20 at 4°C with gentle shaking, overnight.