

Src Antibody

✓ 100 µl
(10 western blots)

Orders ■ 877-616-CELL (2355)
orders@cellsignal.com
Support ■ 877-678-TECH (8324)
info@cellsignal.com
Web ■ www.cellsignal.com

rev. 09/07/11

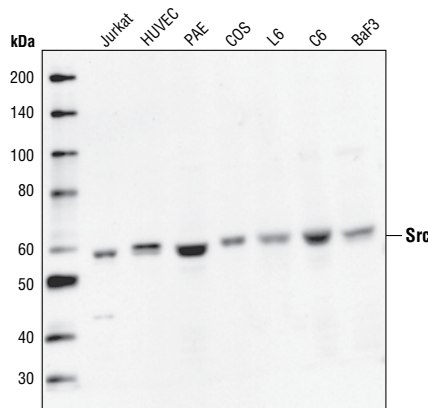
This product is intended for research purposes only. This product is not intended to be used for therapeutic or diagnostic purposes in humans or animals.

Applications	Species Cross-Reactivity*	Molecular Wt.	Source
W, IP, IF-IC, F Endogenous	H, M, R, Mk, (C)	60 kDa	Rabbit**

Background: The Src family of protein tyrosine kinases (including Src, Lyn, Fyn, Yes, Lck, Blk, Hck, etc.) are important in the regulation of growth and differentiation of eukaryotic cells (1). Src activity is regulated by tyrosine phosphorylation at two sites with opposing effects. Phosphorylation of Tyr416 in the activation loop of the kinase domain upregulates enzyme activity. Phosphorylation of Tyr527 in the carboxy-terminal tail by Csk renders the enzyme less active (2).

Specificity/Sensitivity: Src Antibody detects endogenous levels of Src proteins. This antibody may cross-react with other Src family members, but does not cross-react with other non-family proteins.

Source/Purification: Polyclonal antibodies are produced by immunizing animals with a synthetic peptide corresponding to residues close to the carboxy-terminus of human Src. Antibodies are purified by protein A and peptide affinity chromatography.



Western blot analysis of extracts from various cell lines using Src Antibody.

Entrez-Gene ID # 6714
Swiss-Prot Acc. # P12931

Storage: Supplied in 10 mM sodium HEPES (pH 7.5), 150 mM NaCl, 100 µg/ml BSA and 50% glycerol. Store at -20°C. Do not aliquot the antibody.

*Species cross-reactivity is determined by western blot.

**Anti-rabbit secondary antibodies must be used to detect this antibody.

Recommended Antibody Dilutions:

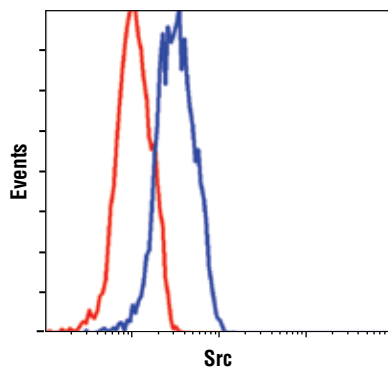
Western blotting	1:1000
Immunoprecipitation	1:100
Immunofluorescence (IF-IC)	1:100
Flow Cytometry	1:100

For application specific protocols please see the web page for this product at www.cellsignal.com.

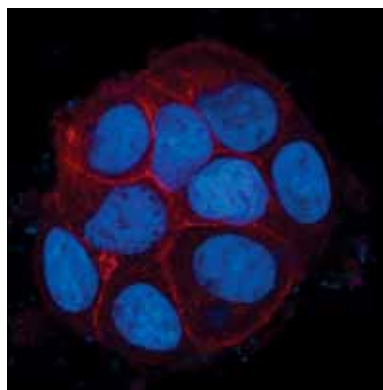
Please visit www.cellsignal.com for a complete listing of recommended companion products.

Background References:

- Thomas, S.M. and Brugge, J.S. (1997) *Annu. Rev. Cell Dev. Biol.* 13, 513-609.
- Hunter, T. (1987) *Cell* 49, 1-4.



Flow cytometric analysis of Jurkat cells, using Src Antibody (blue) compared to a nonspecific negative control antibody (red).



Confocal immunofluorescent analysis of MCF7 cells labeled with Src Antibody (red). Blue=DRAQ5® #4084 fluorescent DNA dye.

IMPORTANT: For western blots, incubate membrane with diluted antibody in 5% w/v BSA, 1X TBS, 0.1% Tween-20 at 4°C with gentle shaking, overnight.

DRAQ5® is a registered trademark of Biostatus Limited.