

# Src (36D10) Rabbit mAb



✓ 100 µl  
(10 western blots)

**Orders** ■ 877-616-CELL (2355)  
orders@cellsignal.com  
**Support** ■ 877-678-TECH (8324)  
info@cellsignal.com  
**Web** ■ www.cellsignal.com

rev. 06/28/10

This product is intended for research purposes only. This product is not intended to be used for therapeutic or diagnostic purposes in humans or animals.

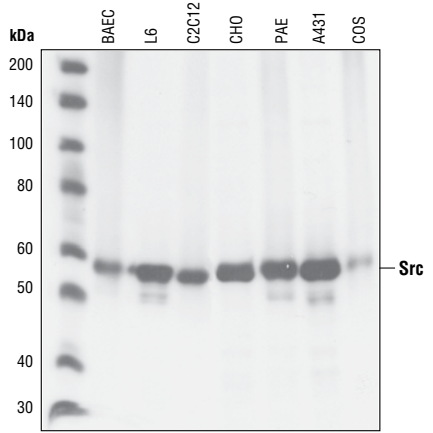
Applications	Species Cross-Reactivity*	Molecular Wt.	Isotype
W, IP, IHC-P, IHC-F, IF-IC, F, IF-F Endogenous	H, M, R, Mk, Hm, B, Pg (C)	60 kDa	Rabbit IgG**

**Background:** The Src family of protein tyrosine kinases (including Src, Lyn, Fyn, Yes, Lck, Blk, Hck, etc.) are important in the regulation of growth and differentiation of eukaryotic cells (1). Src activity is regulated by tyrosine phosphorylation at two sites with opposing effects. Phosphorylation of Tyr416 in the activation loop of the kinase domain upregulates enzyme activity. Phosphorylation of Tyr527 in the carboxy-terminal tail by Csk renders the enzyme less active (2).

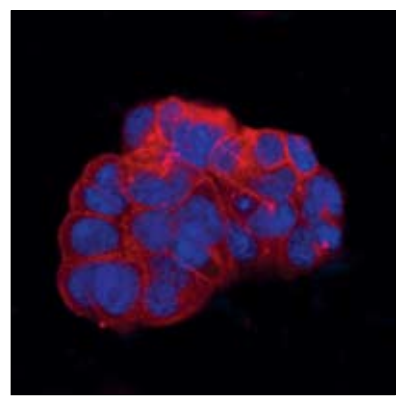
**Specificity/Sensitivity:** Src (36D10) Rabbit mAb detects endogenous levels of Src proteins. The antibody may cross-react with other Src family members, but does not cross-react with other non-family proteins.

**Source/Purification:** Monoclonal antibody is produced by immunizing animals with a synthetic peptide corresponding to residues near the carboxy terminus of human Src.

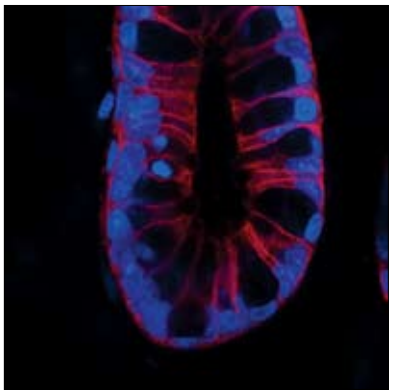
**Background References:**  
(1) Thomas, S.M. and Brugge, J.S. (1997) *Annu. Rev. Cell Dev. Biol.* 13, 513-609.  
(2) Hunter, T. (1987) *Cell* 49, 1-4.



Western blot analysis of extracts from various cell lines, using Src (36D10) Rabbit mAb.



Confocal immunofluorescent analysis of MCF-7 cells labeled with Src (36D10) Rabbit mAb (red). Blue pseudocolor=DRAQ5® #4084 (fluorescent DNA dye).



Confocal immunofluorescent analysis of rat colon labeled with Src (36D10) Rabbit mAb (red). Blue pseudocolor=DRAQ5® #4084 (fluorescent DNA dye).

**Storage:** Supplied in 10 mM sodium HEPES (pH 7.5), 150 mM NaCl, 100 µg/ml BSA and 50% glycerol. Store at -20°C. Do not aliquot the antibody.

\*Species cross-reactivity is determined by western blot.

\*\*Anti-rabbit secondary antibodies must be used to detect this antibody.

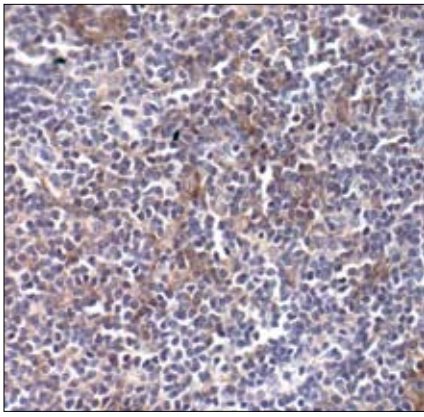
**Recommended Antibody Dilutions:**

Western blotting	1:1000
Immunoprecipitation	1:50
Immunohistochemistry (Paraffin)	1:800
Unmasking buffer:	EDTA
Antibody diluent:	SignalStain® Antibody Diluent #8112
Immunohistochemistry (Frozen)	1:800
Fixative:	3% Formaldehyde/Methanol
Immunofluorescence (IF-IC)	1:100
Immunofluorescence (IF-F)	1:100
Flow Cytometry	1:200

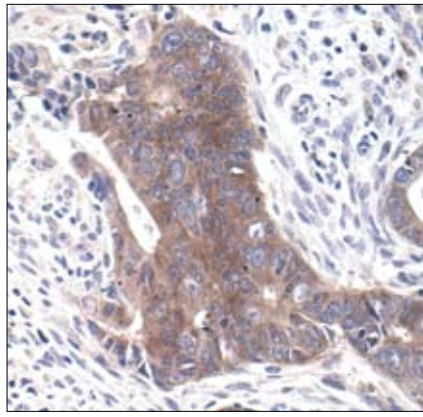
For application specific protocols please see the web page for this product at [www.cellsignal.com](http://www.cellsignal.com).

Please visit [www.cellsignal.com](http://www.cellsignal.com) for a complete listing of recommended companion products.

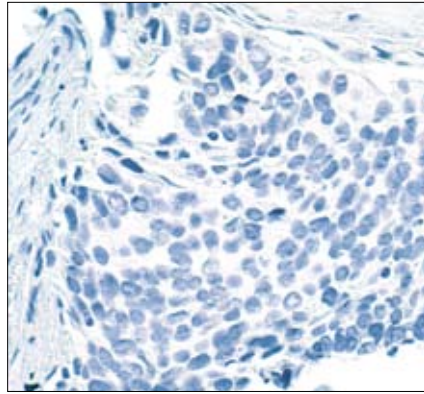
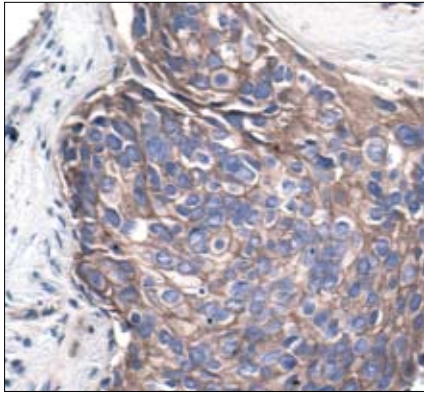
**IMPORTANT: For western blots, incubate membrane with diluted antibody in 5% w/v BSA, 1X TBS, 0.1% Tween-20 at 4°C with gentle shaking, overnight.**



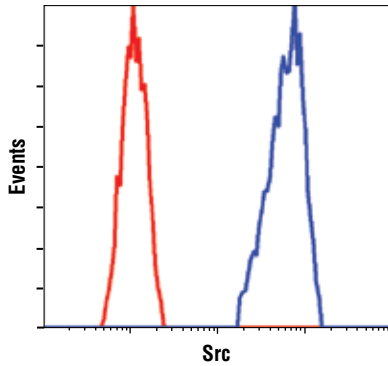
Immunohistochemical analysis of paraffin-embedded Non-Hodgkin's lymphoma using Src (36D10) Rabbit mAb



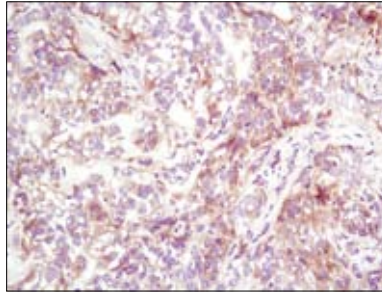
Immunohistochemical analysis of paraffin-embedded human colon carcinoma using Src (36D10) Rabbit mAb.



Immunohistochemical analysis of paraffin-embedded human breast carcinoma using Src (36D10) Rabbit mAb in the presence of control peptide (left) or antigen-specific peptide (right).



Flow cytometric analysis of A-431 cells using Src (36D10) Rabbit mAb (blue) compared to a nonspecific negative control antibody (red).



Immunohistochemical analysis of frozen SKOV-3 xenograft using Src (36D10) Rabbit mAb.