

#2113 Store at -20°C

# Phospho-Src Family (Tyr416) (100F9) Rabbit mAb



- Small 100 µl (10 western blots)
- Large 300 µl (30 western blots)

**Orders** ■ 877-616-CELL (2355)  
orders@cellsignal.com

**Support** ■ 877-678-TECH (8324)  
info@cellsignal.com

**Web** ■ www.cellsignal.com

rev. 06/28/10

This product is intended for research purposes only. This product is not intended to be used for therapeutic or diagnostic purposes in humans or animals.

Applications W Endogenous	Species Cross-Reactivity* H, M, R, (C)	Molecular Wt. 60 kDa	Isotype Rabbit IgG**
---------------------------------	---	-------------------------	-------------------------

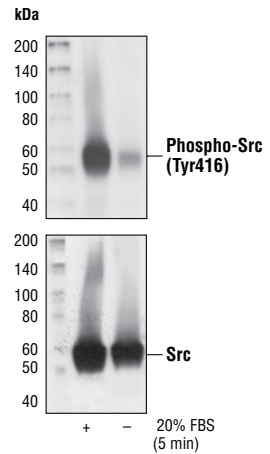
**Background:** The Src family of protein tyrosine kinases (including Src, Lyn, Fyn, Yes, Lck, Blk, Hck, etc.) is important in the regulation of growth and differentiation of eukaryotic cells (1). Src activity is regulated by tyrosine phosphorylation at two sites with opposing effects. Phosphorylation of Tyr416 in the activation loop of the kinase domain upregulates enzyme activity. Phosphorylation of Tyr527 in the carboxy-terminal tail by Csk renders the enzyme less active (2).

**Specificity/Sensitivity:** Phospho-Src Family (Tyr416) (100F9) Rabbit mAb detects endogenous levels of Src only when phosphorylated at tyrosine 416. The antibody may cross-react with other Src family members (Lyn, Fyn, Lck, Yes and Hck) when phosphorylated at equivalent sites.

**Source/Purification:** Monoclonal antibody is produced by immunizing animals with a synthetic phosphopeptide corresponding to residues surrounding Tyr416 of human Src. Antibodies are purified by protein A and peptide affinity chromatography.

**Background References:**

- (1) Thomas, S.M. and Brugge, J.S. (1997) *Annu. Rev. Cell Dev. Biol.* 13, 513-609.
- (2) Hunter, T. (1987) *Cell* 49, 1-4.



Western blot analysis of Colo201 serum starved cells and stimulated with 20% FBS for 5 min, using Phospho-Src family (Tyr416) (100F2) Rabbit mAb (upper) and Src (L4A1) Mouse mAb #2110 (lower).

**Storage:** Supplied in 10 mM sodium HEPES (pH 7.5), 150 mM NaCl, 100 µg/ml BSA, 50% glycerol and less than 0.02% sodium azide. Store at -20°C. Do not aliquot the antibody.

\*Species cross-reactivity is determined by western blot.

\*\*Anti-rabbit secondary antibodies must be used to detect this antibody.

**Recommended Antibody Dilutions:**

Western blotting 1:1000

For application specific protocols please see the web page for this product at [www.cellsignal.com](http://www.cellsignal.com).

Please visit [www.cellsignal.com](http://www.cellsignal.com) for a complete listing of recommended companion products.

**IMPORTANT: For western blots, incubate membrane with diluted antibody in 5% w/v BSA, 1X TBS, 0.1% Tween-20 at 4°C with gentle shaking, overnight.**

© 2010 Cell Signaling Technology, Inc. Rabbit monoclonal antibody is produced under license (granting certain rights including those under U. S. Patents No. 5,675,063 and 7,429,487) from Epitomics, Inc.

**Applications Key:** W—Western IP—Immunoprecipitation IHC—Immunohistochemistry ChIP—Chromatin Immunoprecipitation IF—Immunofluorescence F—Flow cytometry E-P—ELISA-Peptide

**Species Cross-Reactivity Key:** H—human M—mouse R—rat Hm—hamster Mk—monkey Mi—mink C—chicken Dm—D. melanogaster X—Xenopus Z—zebrafish B—bovine

Dg—dog Pg—pig Sc—S. cerevisiae Ce—C. elegans Hr—Horse All—all species expected Species enclosed in parentheses are predicted to react based on 100% homology.