

#2121 Store at -20°C

Cleaved α -Fodrin (Asp1185) Antibody

100 μ l
 (10 western blots)



Orders ■ 877-616-CELL (2355)
 orders@cellsignaling.com
Support ■ 877-678-TECH (8324)
 info@cellsignaling.com
Web ■ www.cellsignaling.com

rev. 02/03/10

This product is intended for research purposes only. This product is not intended to be used for therapeutic or diagnostic purposes in humans or animals.

Applications	Species Cross-Reactivity*	Molecular Wt.	Source
W	H	150 kDa	Rabbit**
Endogenous			

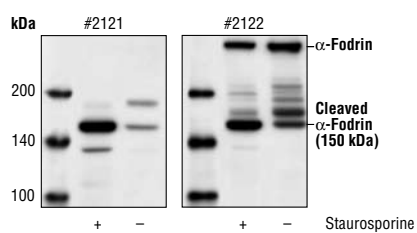
Background: Fodrin (also named nonerythroid spectrin) is a universally expressed membrane-associated cytoskeletal protein consisting of α - and β -subunits (1). This protein is important for maintaining normal membrane structure and supporting cell surface protein function (1). α -fodrin is one of the primary targets cleaved by caspases during apoptosis. The full length 240 kDa protein can be cleaved at several sites within its sequence by activated caspases to yield amino-terminal 150 kDa, carboxy-terminal 120 kDa and 35 kDa major products (2–5). Cleavage of α -fodrin leads to membrane malfunction and cell shrinkage.

Specificity/Sensitivity: Cleaved α -Fodrin (Asp1185) Antibody detects endogenous levels of the large fragment of α -fodrin resulting from cleavage at aspartic acid 1185. The antibody does not recognize full length alpha-fodrin.

Source/Purification: Polyclonal antibodies are produced by immunizing animals with a synthetic peptide (KLH-coupled) corresponding to amino-terminal residues surrounding Asp1185 in human α -fodrin. Antibodies are purified by protein A and peptide affinity chromatography.

Background References:

- (1) Bennett, V. and Gilligan, D.M. (1993) *Annu. Rev. Cell Biol.* 9, 27–66.
- (2) Vanags, D.M. et al. (1996) *J. Biol. Chem.* 271, 31075–31085.
- (3) Cryns, V.L. et al. (1996) *J. Biol. Chem.* 271, 31277–31282.
- (4) Wang, K.K. et al. (1998) *J. Biol. Chem.* 273, 22490–22497.
- (5) Janicke, R.U. et al. (1998) *J. Biol. Chem.* 273, 15540–15545.



Western blot analysis of extracts from HeLa cells, untreated or staurosporine-treated, using Cleaved α -Fodrin (Asp1185) Antibody (left) or α -Fodrin Antibody #2122 (right).

Entrez-Gene ID #6709
Swiss-Prot Acc. #Q13813

Storage: Supplied in 10 mM sodium HEPES (pH 7.5), 150 mM NaCl, 100 μ g/ml BSA and 50% glycerol. Store at -20°C. Do not aliquot the antibody.

***Species cross-reactivity is determined by western blot.**

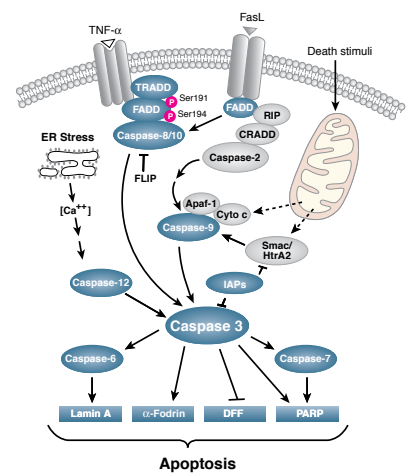
****Anti-rabbit secondary antibodies must be used to detect this antibody.**

Recommended Antibody Dilutions:

Western blotting 1:1000

For application specific protocols please see the web page for this product at www.cellsignaling.com.

Please visit www.cellsignaling.com for a complete listing of recommended companion products.



IMPORTANT: For western blots, incubate membrane with diluted antibody in 5% w/v nonfat dry milk , 1X TBS, 0.1% Tween-20 at 4°C with gentle shaking, overnight.

Applications Key: W—Western IP—Immunoprecipitation IHC—Immunohistochemistry ChIP—Chromatin Immunoprecipitation IF—Immunofluorescence F—Flow cytometry E-P—ELISA-Peptide
Species Cross-Reactivity Key: H—human M—mouse R—rat Hm—hamster Mk—monkey Mi—mink C—chicken Dm—D. melanogaster X—Xenopus Z—zebrafish B—bovine
 Dg—dog Pg—pig Sc—S. cerevisiae Ce—C. elegans Hr—horse All—all species expected Species enclosed in parentheses are predicted to react based on 100% homology.