

#2123 Store at -20°C

Src (32G6) Rabbit mAb



100 µl
 (10 western blots)

Orders ■ 877-616-CELL (2355)
 orders@cellsignal.com
Support ■ 877-678-TECH (8324)
 info@cellsignal.com
Web ■ www.cellsignal.com

rev. 09/30/11

This product is intended for research purposes only. This product is not intended to be used for therapeutic or diagnostic purposes in humans or animals.

Entrez-Gene ID #6714
Swiss-Prot Acc. # P12931

Applications	Species Cross-Reactivity*	Molecular Wt.	Isotype
W, IP Endogenous	H, M, R, (C)	60 kDa	Rabbit IgG**

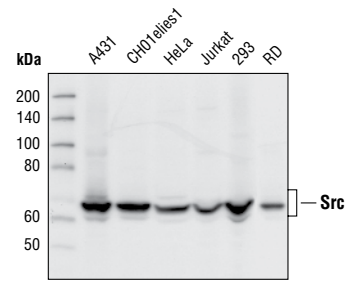
Background: The Src family of protein tyrosine kinases (including Src, Lyn, Fyn, Yes, Lck, Blk, Hck, etc.) are important in the regulation of growth and differentiation of eukaryotic cells (1). Src activity is regulated by tyrosine phosphorylation at two sites with opposing effects. Phosphorylation of Tyr416 in the activation loop of the kinase domain upregulates enzyme activity. Phosphorylation of Tyr527 in the carboxy-terminal tail by Csk renders the enzyme less active (2).

Specificity/Sensitivity: Src (32G6) Rabbit mAb detects endogenous levels of total Src proteins. The antibody does not cross-react with other proteins.

Source/Purification: Monoclonal antibody is produced by immunizing animals with a recombinant fusion protein corresponding to residues 1-110 of human Src protein.

Background References:

- (1) Thomas, S.M. and Brugge, J.S. (1997) *Annu. Rev. Cell Dev. Biol.* 13, 513-609.
- (2) Hunter, T. (1987) *Cell* 49, 1-4.



Western blot analysis of cell extracts from various cell lines, using Src (32G6) Rabbit mAb.

Storage: Supplied in 10 mM sodium HEPES (pH 7.5), 150 mM NaCl, 100 µg/ml BSA and 50% glycerol. Store at -20°C. Do not aliquot the antibody.

***Species cross-reactivity is determined by western blot.**

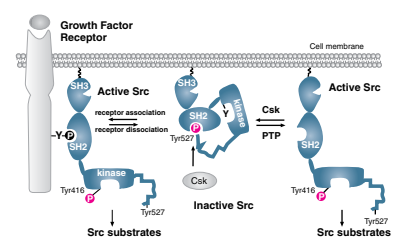
****Anti-rabbit secondary antibodies must be used to detect this antibody.**

Recommended Antibody Dilutions:

Western blotting	1:1000
Immunoprecipitation	1:50

For application specific protocols please see the web page for this product at www.cellsignal.com.

Please visit www.cellsignal.com for a complete listing of recommended companion products.



Mechanisms of Src activation and inactivation (adapted from Bjorge, J.D., et al. (2000) *Oncogene* 19, 5620-35).

IMPORTANT: For western blots, incubate membrane with diluted antibody in 5% w/v BSA, 1X TBS, 0.1% Tween-20 at 4°C with gentle shaking, overnight.

Rabbit monoclonal antibody is produced under license (granting certain rights including those under U. S. Patents No. 5,675,063 and 7,429,487) from Eptomics, Inc.

Applications Key: W—Western IP—Immunoprecipitation IHC—Immunohistochemistry ChIP—Chromatin Immunoprecipitation IF—Immunofluorescence F—Flow cytometry E-P—ELISA-Peptide
Species Cross-Reactivity Key: H—human M—mouse R—rat Hm—hamster Mk—monkey Mi—mink C—chicken Dm—D. melanogaster X—Xenopus Z—zebrafish B—bovine
 Dg—dog Pg—pig Sc—S. cerevisiae Ce—C. elegans Hr—Horse All—all species expected Species enclosed in parentheses are predicted to react based on 100% homology.

© 2011 Cell Signaling Technology, Inc. Cell Signaling Technology® is a trademark of Cell Signaling Technology, Inc.