

#2150 Store at -20°C

TorsinA (D-M2A8) Mouse mAb

✓ 100 µl (10 western blots)



Orders ■ 877-616-CELL (2355) orders@cellsignal.com
Support ■ 877-678-TECH (8324) info@cellsignal.com
Web ■ www.cellsignal.com

rev. 06/09/10

This product is intended for research purposes only. This product is not intended to be used for therapeutic or diagnostic purposes in humans or animals.

Entrez-Gene ID #1861
Swiss-Prot Acc. #O14656

Applications	Species Cross-Reactivity*	Molecular Wt.	Isotype
W Endogenous	H, M, R	35 kDa	Mouse IgG1**

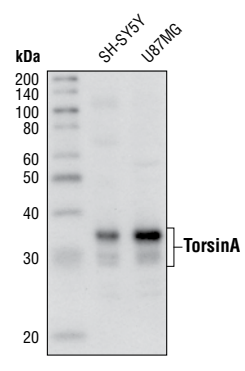
Background: The neurological condition Dystonia is associated with sustained muscle contractions and abnormal posturing (1). TorsinA, torsinB, torp2A and torp3A belong to the family of ATPases associated with cellular activities (AAA+) and mutations in torsinA cause early onset dystonia (2). TorsinA has been shown to suppress intracellular protein aggregation in *C. elegans* and possesses chaperon activity. Interestingly, torsinA is highly expressed in dopaminergic neurons and associates with α -synuclein in Lewy bodies, which pathologically characterize Parkinson's Disease (3-5).

Specificity/Sensitivity: TorsinA (D-M2A8) Mouse mAb detects endogenous levels of total torsinA protein. TorsinA (D-M2A8) Mouse mAb does not detect TorsinB (Hewett, J. et al., 2004).

Source/Purification: Monoclonal antibody is produced by immunizing animals with human recombinant torsinA (aa 51-324).

Background References:

- (1) Fahn, S. (1988) *Adv. Neurol.* 50, 1-8.
- (2) Ozelius, L.J. et al. (1997) *Nat. Genet.* 17, 40-8.
- (3) Caldwell, G.A. et al. (2003) *Hum. Mol. Genet.* 12, 307-19.
- (4) McLean, P.J. et al. (2002) *J. Neurochem.* 83, 846-54.
- (5) O'Farrell, C. et al. (2004) *Brain Res. Mol. Brain Res.* 127, 1-9.



Western blot analysis of extracts from SH-SY5Y and U87MG cells, using TorsinA (D-M2A8) Mouse mAb.

Storage: Supplied in 10 mM sodium HEPES (pH 7.5), 150 mM NaCl, 100 µg/ml BSA and 50% glycerol. Store at -20°C. Do not aliquot the antibody.

*Species cross-reactivity is determined by western blot.

**Anti-mouse secondary antibodies must be used to detect this antibody.

Recommended Antibody Dilutions:
Western blotting 1:1000

For application specific protocols please see the web page for this product at www.cellsignal.com.

Please visit www.cellsignal.com for a complete listing of recommended companion products.

IMPORTANT: For western blots, incubate membrane with diluted antibody in 5% w/v nonfat dry milk, 1X TBS, 0.1% Tween-20 at 4°C with gentle shaking, overnight.

Applications Key: W—Western IP—Immunoprecipitation IHC—Immunohistochemistry ChIP—Chromatin Immunoprecipitation IF—Immunofluorescence F—Flow cytometry E-P—ELISA-Peptide
Species Cross-Reactivity Key: H—human M—mouse R—rat Hm—hamster Mk—monkey Mi—mink C—chicken Dm—D. melanogaster X—Xenopus Z—zebrafish B—bovine
 Dg—dog Pg—pig Sc—S. cerevisiae Ce—C. elegans Hr—Horse All—all species expected Species enclosed in parentheses are predicted to react based on 100% homology.