

WSTF Antibody

✓ 100 µl
(10 western blots)

Orders ■ 877-616-CELL (2355)
orders@cellsignal.com

Support ■ 877-678-TECH (8324)
info@cellsignal.com

Web ■ www.cellsignal.com

rev. 01/11/10

This product is intended for research purposes only. This product is not intended to be used for therapeutic or diagnostic purposes in humans or animals.

Applications	Species Cross-Reactivity*	Molecular Wt.	Source
W, IP Endogenous	H, M, R, Mk	170, 185 kDa	Rabbit**

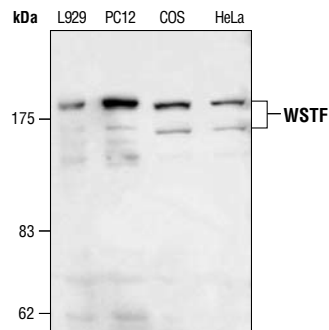
Background: The human WSTF gene is located within the common Williams Syndrome (WS) deletion area at chromosome 7q11.23. Several WSTF gene products have been detected with little difference in length of polypeptides (1-3). Functional motifs identified by sequence-homology searches include a PHD-type zinc finger motif followed by a bromodomain. Both motifs are found in many transcription factors, suggesting that WSTF may function as a transcription factor. A *Drosophila* gene (*acf1*) was cloned, which encodes two forms of Acf1 proteins with molecular weight 170 kDa and 185 kDa, respectively (4). It was demonstrated that Acf1 is structurally related to the human WSTF gene. Acf1 forms a complex with another protein, ISWI, and functions in the ATP-dependent catalysis of chromatin assembly (4).

Specificity/Sensitivity: WSTF Antibody detects endogenous levels of total WSTF protein. The antibody does not cross-react with other related transcription factors.

Source/Purification: Polyclonal antibodies are produced by immunizing animals with a synthetic peptide (KLH-coupled) corresponding to the sequence of human WSTF (WBSCR9). Antibodies are purified by protein A and peptide affinity chromatography.

Background References:

- (1) Peoples, R.J. et al. (1998) *Cytogenet. Cell Genet.* 82, 238–246.
- (2) Lu, X. et al. (1998) *Genomics* 54, 241–249.
- (3) Jones, M.H. et al. (2000) *Genomics* 63, 40–45.
- (4) Ito, T. et al. (2000) *Genes Dev.* 13, 1529–1539.



Western blot analysis of lysates from various cell types using WSTF Antibody.

Entrez-Gene ID #9031
Swiss-Prot Acc. #Q9UIG0

Storage: Supplied in 10 mM sodium HEPES (pH 7.5), 150 mM NaCl, 100 µg/ml BSA and 50% glycerol. Store at -20°C. Do not aliquot the antibody.

*Species cross-reactivity is determined by western blot.

**Anti-rabbit secondary antibodies must be used to detect this antibody.

Recommended Antibody Dilutions:

Western blotting	1:1000
Immunoprecipitation	1:50

For application specific protocols please see the web page for this product at www.cellsignal.com.

Please visit www.cellsignal.com for a complete listing of recommended companion products.

IMPORTANT: For western blots, incubate membrane with diluted antibody in 5% w/v BSA, 1X TBS, 0.1% Tween-20 at 4°C with gentle shaking, overnight.

Applications Key: W—Western IP—Immunoprecipitation IHC—Immunohistochemistry ChIP—Chromatin Immunoprecipitation IF—Immunofluorescence F—Flow cytometry E-P—ELISA-Peptide

Species Cross-Reactivity Key: H—human M—mouse R—rat Hm—hamster Mk—monkey Mi—mink C—chicken Dm—D. melanogaster X—Xenopus Z—zebrafish B—bovine

Dg—dog Pg—pig Sc—S. cerevisiae Ce—C. elegans Hr—Horse All—all species expected Species enclosed in parentheses are predicted to react based on 100% homology.