

EB-1 (1A11/4) Mouse mAb

100 µl
(10 western blots)

Orders ■ 877-616-CELL (2355)
orders@cellsignaling.com

Support ■ 877-678-TECH (8324)
info@cellsignaling.com

Web ■ www.cellsignaling.com

rev. 1/15/10

This product is intended for research purposes only. This product is not intended to be used for therapeutic or diagnostic purposes in humans or animals.

Entrez-Gene ID #22919
Swiss-Prot Acc. #Q15691

Applications	Species Cross-Reactivity*	Molecular Wt.	Isotype
W, IP Endogenous	H, Mk	30 kDa	Mouse IgG2b**

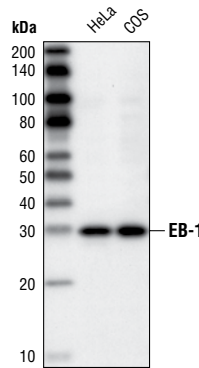
Background: EB1 (end-binding protein 1) is a microtubule associated protein (1). EB1 localizes to the growing ends of microtubules, the centrosome and the mitotic spindle (2-4). EB1 is also found to associate with the adenomatous polyposis coli (APC) protein (5). Recent studies also suggest that EB1 plays a role in microtubule-based transport (6).

Specificity/Sensitivity: EB-1 (1A11/4) Mouse mAb detects endogenous levels of EB-1.

Source/Purification: Monoclonal antibody is produced by immunizing CD-1 animal with a recombinant human EB-1 protein.

Background References:

- (1) Tirnauer, J.S. and Bierer, B.E. (2000) *J. Cell Biol.* 149, 761-766.
- (2) Vaughan, K.T. (2005) *J. Cell Biol.* 171, 197-200.
- (3) Berrueta, L. et al. (1998) *Proc. Natl. Acad. Sci. USA* 95, 10596-10601.
- (4) Morrison, E.E. et al. (1998) *Oncogene* 17, 3471-3477.
- (5) Su, L.K. et al. (1995) *Cancer Res.* 55, 2972-2977.
- (6) Vaughan, K.T. (2005) *J. Cell Biol.* 171, 197-200.



Western blot analysis of total cell lysates from HeLa and COS cells, using EB-1 Antibody.

Storage: Supplied in 10 mM sodium HEPES (pH 7.5), 150 mM NaCl, 100 µg/ml BSA, 50% glycerol and less than 0.02% sodium azide. Store at -20°C. Do not aliquot the antibody.

***Species cross-reactivity is determined by Western blot.**

****Anti-mouse secondary antibodies must be used to detect this antibody.**

Recommended Antibody Dilutions:

Western blotting 1:1000
Immunoprecipitation 1:100

For application specific protocols please see the web page for this product at www.cellsignaling.com.

Please visit www.cellsignaling.com for a complete listing of recommended companion products.

IMPORTANT: For Western blots, incubate membrane with diluted antibody in 5% w/v nonfat dry milk, 1X TBS, 0.1% Tween-20 at 4°C with gentle shaking, overnight.

Applications Key: W—Western IP—Immunoprecipitation IHC—Immunohistochemistry ChIP—Chromatin Immunoprecipitation IF—Immunofluorescence F—Flow cytometry E-P—ELISA-Peptide

Species Cross-Reactivity Key: H—human M—mouse R—rat Hm—hamster Mk—monkey Mi—mink C—chicken Dm—D. melanogaster X—Xenopus Z—zebrafish B—bovine

Dg—dog Pg—pig Sc—S. cerevisiae Ce—C. elegans Hr—horse All—all species expected Species enclosed in parentheses are predicted to react based on 100% homology.