

Rab4 Antibody

✓ 100 µl
(10 western blots)

Orders ■ 877-616-CELL (2355)
orders@cellsignal.com
Support ■ 877-678-TECH (8324)
info@cellsignal.com
Web ■ www.cellsignal.com

rev. 1/15/10

This product is intended for research purposes only. This product is not intended to be used for therapeutic or diagnostic purposes in humans or animals.

Entrez-Gene ID # 5867
Swiss-Prot Acc. # P20338

Applications	Species Cross-Reactivity*	Molecular Wt.	Source
W Endogenous	H, M, R, Mk, B, Dr	25 kDa	Rabbit**

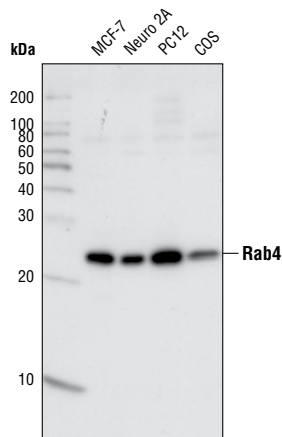
Background: Rab4 is a member of the Ras superfamily of small Rab GTPases implicated in endocytosis. Rab4 is localized at early endosomes/recycling endosomes and functions as a key regulator for sorting/recycling of membrane and proteins (1,2). Rab4 has two isoforms, Rab4A and Rab4B, both of which are localized in similar cellular compartments and are believed to have similar functions (4). Rab4 interacts with several Rab4 effectors in a complex on a special endosome site that promotes membrane/protein recycling (1,3).

Specificity/Sensitivity: Rab4 Antibody detects endogenous levels of total Rab4 protein.

Source/Purification: Polyclonal antibodies are produced by immunizing animals with a synthetic peptide (KLH-coupled) corresponding to residues surrounding Asp128 of human Rab4 protein. Antibodies are purified by protein A and peptide affinity chromatography.

Background References:

- (1) Zerial, M. and McBride, H. (2001) *Nat. Rev. Mol. Cell Biol.* 2, 107–117.
- (2) van der Sluijs, P. et al. (1992) *Cell* 70, 729–740.
- (3) Deneka, M. et al. (2003) *EMBO J.* 22, 2645–2657.
- (4) Krawczyk, M. et al. (2007) *Nucleic Acids Res.* 35, 595–605.



Western blot analysis of extracts from various cell types using Rab4 Antibody.

Storage: Supplied in 10 mM sodium HEPES (pH 7.5), 150 mM NaCl, 100 µg/ml BSA and 50% glycerol. Store at -20°C. Do not aliquot the antibody.

*Species cross-reactivity is determined by Western blot.

**Anti-rabbit secondary antibodies must be used to detect this antibody.

Recommended Antibody Dilutions:

Western blotting 1:1000

For application specific protocols please see the web page for this product at www.cellsignal.com.

Please visit www.cellsignal.com for a complete listing of recommended companion products.

IMPORTANT: For Western blots, incubate membrane with diluted antibody in 5% w/v nonfat dry milk, 1X TBS, 0.1% Tween-20 at 4°C with gentle shaking, overnight.

Applications Key: W—Western IP—Immunoprecipitation IHC—Immunohistochemistry ChIP—Chromatin Immunoprecipitation IF—Immunofluorescence F—Flow cytometry E-P—ELISA-Peptide
Species Cross-Reactivity Key: H—human M—mouse R—rat Hm—hamster Mk—monkey Mi—mink C—chicken Dm—D. melanogaster X—Xenopus Z—zebrafish B—bovine
Dg—dog Pg—pig Sc—S. cerevisiae Ce—C. elegans Hr—horse All—all species expected Species enclosed in parentheses are predicted to react based on 100% homology.