

#2265 Store at -20°C

Evi-1 Antibody



✓ 100 µl
(10 western blots)

Orders ■ 877-616-CELL (2355)
orders@cellsignal.com
Support ■ 877-678-TECH (8324)
info@cellsignal.com
Web ■ www.cellsignal.com

rev. 08/20/10

This product is intended for research purposes only. This product is not intended to be used for therapeutic or diagnostic purposes in humans or animals.

Entrez-Gene ID #2122
Swiss-Prot Acc. #Q03112

Applications	Species Cross-Reactivity*	Molecular Wt.	Source
W Endogenous	H, (Mk, Dg)	95, 145, 190 kDa	Rabbit**

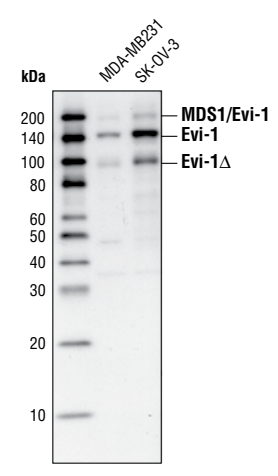
Background: Evi-1 (Ecotropic virus integration site 1) was originally identified as a common site of viral integration in murine myeloid leukemia. It is involved in human myeloid disorders through chromosome translocation and inversion (1) and is also implicated in solid tumor formation (2). Evi-1 is a zinc finger transcription factor which also plays an important role in animal development (3). It has many isoforms due to alternative usage of 5'-ends (4), alternative splicing (5), and intergenic splicing which results in the formation of a fusion protein with MDS1 in normal tissues (6).

Specificity/Sensitivity: Evi-1 Antibody detects endogenous levels of total Evi-1 and MDS1/Evi-1 proteins.

Source/Purification: Polyclonal antibodies are produced by immunizing animals with a synthetic peptide corresponding to amino acids surrounding Leu921 of human Evi-1. Antibodies are purified by protein A and peptide affinity chromatography.

Background References:

- (1) Nucifora, G. et al. (2006) *Gene* 368, 1–11.
- (2) Brooks, D.J. et al. (1996) *Br. J. Cancer* 74, 1518–1525.
- (3) Hoyt, P.R. et al. (1997) *Mech. Dev.* 65, 55–70.
- (4) Aytekin, M. et al. (2005) *Gene* 356, 160–168.
- (5) Morishita, K. et al. (1990) *Oncogene* 5, 963–971.
- (6) Fears, S. et al. (1996) *Proc. Natl. Acad. Sci. USA* 93, 1642–1647.



Western blot analysis of total cell extracts from MDA-MB231 and SK-OV-3 cells, using Evi-1 antibody. MDS/Evi-1 denotes the fusion between MDS1 and Evi-1 (see reference #6) and Evi-1 Δ denotes the truncated form of Evi-1 (see reference #5).

Storage: Supplied in 10 mM sodium HEPES (pH 7.5), 150 mM NaCl, 100 µg/ml BSA and 50% glycerol. Store at -20°C. Do not aliquot the antibody.

*Species cross-reactivity is determined by western blot.

**Anti-rabbit secondary antibodies must be used to detect this antibody.

Recommended Antibody Dilutions:

Western blotting 1:1000

For application specific protocols please see the web page for this product at www.cellsignal.com.

Please visit www.cellsignal.com for a complete listing of recommended companion products.

IMPORTANT: For western blots, incubate membrane with diluted antibody in 5% w/v nonfat dry milk, 1X TBS, 0.1% Tween-20 at 4°C with gentle shaking, overnight.

Applications Key: W—Western IP—Immunoprecipitation IHC—Immunohistochemistry ChIP—Chromatin Immunoprecipitation IF—Immunofluorescence F—Flow cytometry E-P—ELISA-Peptide
Species Cross-Reactivity Key: H—human M—mouse R—rat Hm—hamster Mk—monkey Mi—mink C—chicken Dm—D. melanogaster X—Xenopus Z—zebrafish B—bovine
 Dg—dog Pg—pig Sc—S. cerevisiae Ce—C. elegans Hr—horse All—all species expected Species enclosed in parentheses are predicted to react based on 100% homology.