

# NUP98 (P671) Antibody

✓ 100 µl  
(10 western blots)

**Orders** ■ 877-616-CELL (2355)  
orders@cellsignaling.com

**Support** ■ 877-678-TECH (8324)  
info@cellsignaling.com

**Web** ■ www.cellsignaling.com

rev. 1/19/10

This product is intended for research purposes only. This product is not intended to be used for therapeutic or diagnostic purposes in humans or animals.

Entrez-Gene ID #4928  
Swiss-Prot Acc. #P52948

Applications	Species Cross-Reactivity*	Molecular Wt.	Source
W, IP Endogenous	H, M, R, Mk, B	98 kDa	Rabbit**

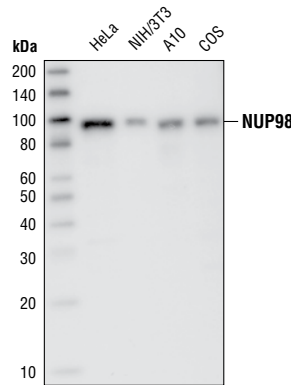
**Background:** NUP98 (nucleoporin 98 kDa) is a component of the nuclear pore complex. It is expressed as 3 different precursors which undergo auto-cleavage to generate a common amino-terminal 98 kDa peptide (NUP98) and carboxy-terminal 6, 96 (NUP96) and 88 (p88) kDa peptides, respectively (1-2). NUP98 contains FG and GLFG repeat domains at its amino-terminus and an RNA-binding domain in its carboxy terminus (3). The NUP98 gene is localized on chromosome 11p15.5, a region frequently rearranged in leukemias. To date, 15 fusion partners have been identified for NUP98 (4-5).

**Specificity/Sensitivity:** NUP98 (P671) Antibody recognizes endogenous levels of NUP98 protein.

**Source/Purification:** Polyclonal antibodies are produced by immunizing animals with a synthetic peptide (KLH-coupled) corresponding to residues surrounding Pro671 of human NUP98. Antibodies are purified by protein A and peptide affinity chromatography.

#### Background References:

- (1) Fontoura, B.M. et al. (1999) *J. Cell Biol.* 144, 1097-1112.
- (2) Rosenblum, J.S. and Blobel, G. (1999) *Proc. Natl. Acad. Sci. USA* 96, 11370-11375.
- (3) Griffis, E.R. et al. (2004) *Mol. Biol. Cell* 15, 1991-2002.
- (4) Slape, C. and Aplan, P.D. (2004) *Leuk. Lymphoma* 45, 1341-1350.
- (5) Nakamura, T. (2005) *Int J Hematol* 82, 21-27.



Western blot analysis of total cell lysates from HeLa, NIH/3T3, A10 and COS cells, using NUP98 (P671) Antibody.

**Storage:** Supplied in 10 mM sodium HEPES (pH 7.5), 150 mM NaCl, 100 µg/ml BSA and 50% glycerol. Store at -20°C. Do not aliquot the antibody.

\*Species cross-reactivity is determined by Western blot.

\*\*Anti-rabbit secondary antibodies must be used to detect this antibody.

#### Recommended Antibody Dilutions:

Western blotting 1:1000  
Immunoprecipitation 1:100

For application specific protocols please see the web page for this product at [www.cellsignaling.com](http://www.cellsignaling.com).

Please visit [www.cellsignaling.com](http://www.cellsignaling.com) for a complete listing of recommended companion products.

**IMPORTANT: For Western blots, incubate membrane with diluted antibody in 5% w/v nonfat dry milk, 1X TBS, 0.1% Tween-20 at 4°C with gentle shaking, overnight.**

**Applications Key:** W—Western IP—Immunoprecipitation IHC—Immunohistochemistry ChIP—Chromatin Immunoprecipitation IF—Immunofluorescence F—Flow cytometry E-P—ELISA-Peptide  
**Species Cross-Reactivity Key:** H—human M—mouse R—rat Hm—hamster Mk—monkey Mi—mink C—chicken Dm—D. melanogaster X—Xenopus Z—zebrafish B—bovine  
 Dg—dog Pg—pig Sc—S. cerevisiae Ce—C. elegans Hr—horse All—all species expected Species enclosed in parentheses are predicted to react based on 100% homology.