

#2297 Store at -20°C

4E-T Antibody

✓ 100 µl
(10 western blots)

Orders ■ 877-616-CELL (2355)
orders@cellsignal.com
Support ■ 877-678-TECH (8324)
info@cellsignal.com
Web ■ www.cellsignal.com

rev. 03/09/10

This product is intended for research purposes only. This product is not intended to be used for therapeutic or diagnostic purposes in humans or animals.

Entrez-Gene ID #56478
Swiss-Prot Acc. #Q9NRA8

Applications W, IP Endogenous	Species Cross-Reactivity* H	Molecular Wt. 140 kDa	Source Rabbit**
-------------------------------------	--------------------------------	--------------------------	--------------------

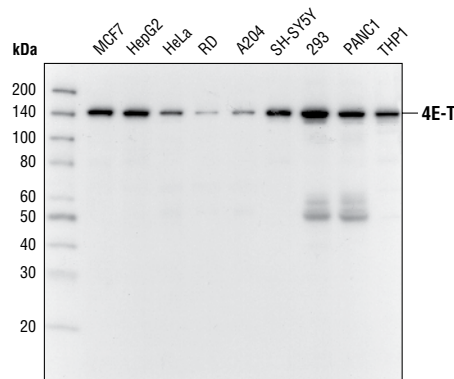
Background: During translation, eIF4E binds to the 5' cap structure of mRNA and helps mRNA bind to the ribosome. There are several factors that associate with eIF4E. One of these factors is eIF4E-Transporter (4E-T) (1). 4E-T has an eIF4E binding site, a nuclear localization signal and two nuclear export signals (1). Studies demonstrate that 4E-T functions as a nucleocytoplasmic shuttling protein mediating the import of eIF4E into the nucleus (1). Recent findings indicate that 4E-T, along with eIF4E, is concentrated in the processing bodies (P-bodies) in the cytoplasm (2). Furthermore, 4E-T decreases mRNA stability (2).

Specificity/Sensitivity: 4E-T Antibody detects endogenous levels of total 4E-T protein.

Source/Purification: Polyclonal antibodies are produced by immunizing animals with a synthetic peptide corresponding to the sequence of human 4E-T. Antibodies are purified by protein A and peptide affinity chromatography.

Background References:

- (1) Dostie, J. et al. (2000) *EMBO J.* 19, 3142–3156.
- (2) Ferraiuolo, M.A. et al. (2005) *J. Cell Biol.* 170, 913–924.



Western blot analysis of extracts from various cell lines, using 4E-T Antibody.

Storage: Supplied in 10 mM sodium HEPES (pH 7.5), 150 mM NaCl, 100 µg/ml BSA and 50% glycerol. Store at -20°C. Do not aliquot the antibody.

*Species cross-reactivity is determined by western blot.

**Anti-rabbit secondary antibodies must be used to detect this antibody.

Recommended Antibody Dilutions:

Western blotting	1:1000
Immunoprecipitation	1:50

For application specific protocols please see the web page for this product at www.cellsignal.com.

Please visit www.cellsignal.com for a complete listing of recommended companion products.

IMPORTANT: For western blots, incubate membrane with diluted antibody in 5% w/v BSA, 1X TBS, 0.1% Tween-20 at 4°C with gentle shaking, overnight.

Applications Key: W—Western IP—Immunoprecipitation IHC—Immunohistochemistry ChIP—Chromatin Immunoprecipitation IF—Immunofluorescence F—Flow cytometry E-P—ELISA-Peptide
Species Cross-Reactivity Key: H—human M—mouse R—rat Hm—hamster Mk—monkey Mi—mink C—chicken Dm—D. melanogaster X—Xenopus Z—zebrafish B—bovine
Dg—dog Pg—pig Sc—S. cerevisiae Ce—C. elegans Hr—Horse All—all species expected Species enclosed in parentheses are predicted to react based on 100% homology.