

#2308 Store at -20°C

p38 δ MAP Kinase (10A8) Rabbit mAb

100 μl
 (10 western blots)



Orders ■ 877-616-CELL (2355)
 orders@cellsignal.com
Support ■ 877-678-TECH (8324)
 info@cellsignal.com
Web ■ www.cellsignal.com

rev. 08/10/10

This product is intended for research purposes only. This product is not intended to be used for therapeutic or diagnostic purposes in humans or animals.

Entrez-Gene ID #5603
Swiss-Prot Acc. #O15264

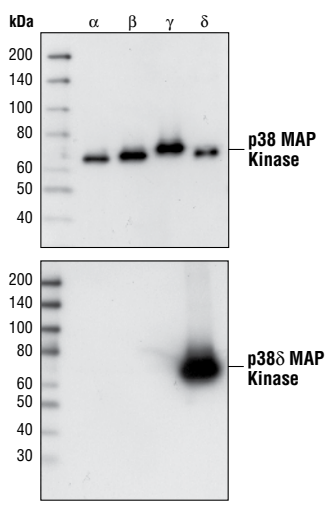
Applications	Species Cross-Reactivity*	Molecular Wt.	Isotype
W, IP Endogenous	H, R	43 kDa	Rabbit IgG**

Background: p38 MAP kinase (MAPK), also called RK (1) or CSBP (2), is the mammalian orthologue of the yeast HOG kinase which participates in a signaling cascade controlling cellular responses to cytokines and stress (1-4). Four isoforms of p38 MAP kinase, p38 α , β , γ (also known as ERK6 or SAPK3) and δ (also known as SAPK4) have been identified. Similar to the SAPK/JNK pathway, p38 MAP kinase is activated by a variety of cellular stresses including osmotic shock, inflammatory cytokines, lipopolysaccharides (LPS), UV light and growth factors (1-5). MKK3, MKK6 and SEK activate p38 MAP kinase by phosphorylation at Thr180 and Tyr182. Activated p38 MAP kinase has been shown to phosphorylate and activate MAPKAP kinase 2 (3) and to phosphorylate the transcription factors ATF-2 (5), Max (6) and MEF2 (5-8)..

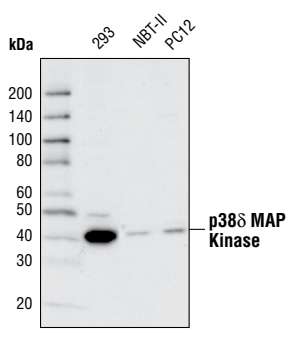
Specificity/Sensitivity: p38 δ MAP Kinase (10A8) Rabbit mAb detects endogenous levels of total p38 δ MAP kinase protein. This antibody does not cross-react with other isoforms of p38 MAP kinase.

Source/Purification: Monoclonal antibody is produced by immunizing animals with a synthetic peptide corresponding to residues around the carboxy terminus of p38 δ MAPK.

Background References:
 (1) Rouse, J. et al. (1994) *Cell* 78, 1027-1037.
 (2) Han, J. et al. (1994) *Science* 265, 808-811.
 (3) Lee, J.C. et al. (1994) *Nature* 372, 739-746.
 (4) Freshney, N.W. et al. (1994) *Cell* 78, 1039-1049.
 (5) Raingeaud, J. et al. (1995) *J. Biol. Chem.* 270, 7420-7426.
 (6) Zervos, A.S. et al. (1995) *Proc. Natl. Acad. Sci. USA* 92, 10531-10534.
 (7) Zhao, M. et al. (1999) *Mol. Cell. Biol.* 19, 21-30.
 (8) Yang, S.H. et al. (1999) *Mol. Cell. Biol.* 19, 4028-4038.



Western blot analysis of purified recombinant full-length p38 MAP kinase GST fusion proteins, using p38 MAP kinase pan antibody (upper), or p38 δ MAP Kinase (10A8) Rabbit mAb (lower).



Western blot analysis of extracts from 293, NBT-II and PC12 cells, using p38 δ MAP Kinase (10A8) Rabbit mAb.

Storage: Supplied in 10 mM sodium HEPES (pH 7.5), 150 mM NaCl, 100 $\mu\text{g/ml}$ BSA, 50% glycerol and less than 0.02% sodium azide. Store at -20°C . Do not aliquot the antibody.

***Species cross-reactivity is determined by western blot.**

****Anti-rabbit secondary antibodies must be used to detect this antibody.**

Recommended Antibody Dilutions:
 Western blotting 1:1000
 Immunoprecipitation 1:50

For application specific protocols please see the web page for this product at www.cellsignal.com.

Please visit www.cellsignal.com for a complete listing of recommended companion products.

IMPORTANT: For western blots, incubate membrane with diluted antibody in 5% w/v BSA, 1X TBS, 0.1% Tween-20 at 4°C with gentle shaking, overnight.

Applications Key: W—Western IP—Immunoprecipitation IHC—Immunohistochemistry ChIP—Chromatin Immunoprecipitation IF—Immunofluorescence F—Flow cytometry E-P—ELISA-Peptide
Species Cross-Reactivity Key: H—human M—mouse R—rat Hm—hamster Mk—monkey Mi—mink C—chicken Dm—D. melanogaster X—Xenopus Z—zebrafish B—bovine
 Dg—dog Pg—pig Sc—S. cerevisiae Ce—C. elegans Hr—Horse All—all species expected Species enclosed in parentheses are predicted to react based on 100% homology.

© 2010 Cell Signaling Technology, Inc. Rabbit monoclonal antibody is produced under license (granting certain rights including those under U. S. Patents No. 5,675,063 and 7,429,487) from Eptitomics, Inc.