

#2319 Store at -20°C

NCK1 (15B9) Rabbit mAb

100 µl (10 western blots)



Orders ■ 877-616-CELL (2355)
orders@cellsignal.com
Support ■ 877-678-TECH (8324)
info@cellsignal.com
Web ■ www.cellsignal.com

rev. 06/18/10

This product is intended for research purposes only. This product is not intended to be used for therapeutic or diagnostic purposes in humans or animals.

Entrez-Gene ID #4690
Swiss-Prot Acc. #P16333

Applications	Species Cross-Reactivity*	Molecular Wt.	Isotype
W, IP Endogenous	H, M, R, Mk	47 kDa	Rabbit IgG**

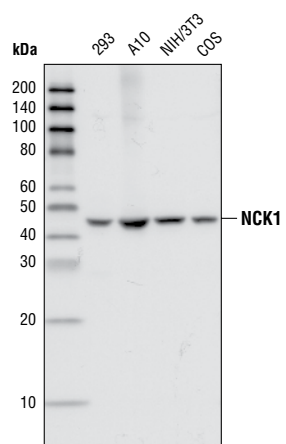
Background: NCK1 (also known as NCK or NCK α) is a broadly expressed oncogenic adapter protein consisting of three SH3 domains and one SH2 domain (1-3). NCK1 becomes phosphorylated upon activation of variety of cell surface receptors and is involved in actin cytoskeletal organization induced by many stimuli (4-6). NCK2 (also known as NCK β), a homolog of NCK1, has an overlapping expression pattern and redundant functions with NCK1 (7).

Specificity/Sensitivity: NCK1 (15B9) Rabbit mAb detects the endogenous levels of total NCK1 protein. Based on homology it may also recognize NCK2.

Source/Purification: Monoclonal antibody is produced by immunizing animals with a synthetic peptide corresponding to residues surrounding Gly300 of human NCK1.

Background References:

- (1) Lehmann, J.M. et al. (1990) *Nucleic Acids Res.* 18, 1048.
- (2) Chou, M.M. et al. (1992) *Mol. Cell Biol.* 12, 5834-5842.
- (3) Li, W. et al. (1992) *Mol. Cell Biol.* 12, 5824-5833.
- (4) Verma, R. et al. (2006) *J. Clin. Invest.* 116, 1346-1359.
- (5) Rivera, G.M. et al. (2006) *Proc. Natl. Acad. Sci. USA* 103, 9536-9541.
- (6) Li, H. et al. (2006) *Biochem. Biophys. Res. Commun.* 349, 310-316.
- (7) Bladt, F. et al. (2003) *Mol. Cell Biol.* 23, 4586-4597.



Western blot analysis of total cell lysates from 293, A10, NIH/3T3 and COS cells, using NCK1 (15B9) Rabbit mAb.

Storage: Supplied in 10 mM sodium HEPES (pH 7.5), 150 mM NaCl, 100 µg/ml BSA and 50% glycerol. Store at -20°C. Do not aliquot the antibody.

*Species cross-reactivity is determined by western blot.

**Anti-rabbit secondary antibodies must be used to detect this antibody.

Recommended Antibody Dilutions:

Western blotting	1:1000
Immunoprecipitation	1:50

For application specific protocols please see the web page for this product at www.cellsignal.com.

Please visit www.cellsignal.com for a complete listing of recommended companion products.

IMPORTANT: For western blots, incubate membrane with diluted antibody in 5% w/v nonfat dry milk, 1X TBS, 0.1% Tween-20 at 4°C with gentle shaking, overnight.

© 2010 Cell Signaling Technology, Inc. Rabbit monoclonal antibody is produced under license (granting certain rights including those under U. S. Patents No. 5,675,063 and 7,429,487) from Epitomics, Inc.

Applications Key: W—Western IP—Immunoprecipitation IHC—Immunohistochemistry ChIP—Chromatin Immunoprecipitation IF—Immunofluorescence F—Flow cytometry E-P—ELISA-Peptide

Species Cross-Reactivity Key: H—human M—mouse R—rat Hm—hamster Mk—monkey Mi—mink C—chicken Dm—D. melanogaster X—Xenopus Z—zebrafish B—bovine

Dg—dog Pg—pig Sc—S. cerevisiae Ce—C. elegans Hr—Horse All—all species expected Species enclosed in parentheses are predicted to react based on 100% homology.