

#2320 Store at -20°C

AP-2 γ Antibody

100 μ l
 (10 Western mini-blot)

Orders ■ 877-616-CELL (2355)
 orders@cellsignaling.com
Support ■ 877-678-TECH (8324)
 info@cellsignaling.com
Web ■ www.cellsignaling.com

New 11/06

This product is for *in vitro* research use only and is not intended for use in humans or animals.

Applications	Species Cross-Reactivity	Molecular Wt.	Source
W, IF-IC	H	49 kDa	Rabbit

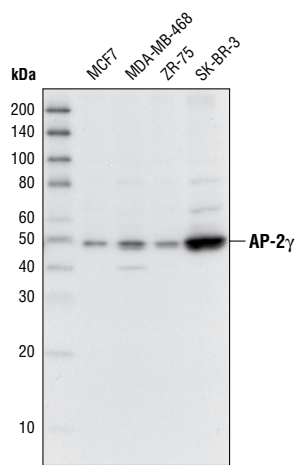
Background: Activator protein 2 γ (AP-2 γ) is a member of the developmentally-regulated transcription factor activator protein 2 family (1). Overexpression of p53 in human breast cancer cells increases AP-2 γ mRNA and protein (2). In addition, p53 binds to the AP-2 γ promoter, suggesting that AP-2 γ is a target of p53. AP-2 γ therefore may contribute to p53-mediated growth inhibition (2). Studies also found that AP-2 γ increases p21 mRNA and protein levels and induces cell-cycle arrest in G1 phase (3). Overexpression of AP-2 γ inhibits the growth of human breast cancer cells (3). Taken together, these findings suggest that AP-2 γ functions as a tumor suppressor (3).

Specificity/Sensitivity: AP-2 γ Antibody detects endogenous levels of total AP-2 γ protein.

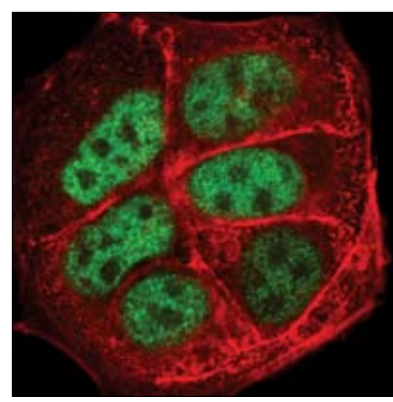
Source/Purification: Polyclonal antibodies are produced by immunizing rabbits with a synthetic peptide (KLH-coupled) derived from the sequence of human AP-2 γ . Antibodies are purified by protein A and peptide affinity chromatography.

Background References:

- (1) Hasleton, M.D. et al. (2003) *Biochem. J.* 373, 925–932.
- (2) Li, H. et al. (2006) *Oncogene* 25, 5405–5415.
- (3) Li, H. et al. (2006) *Neoplasia* 8, 568–577.



Western blot analysis of extracts from several cell lines, using AP-2 γ Antibody.



Confocal immunofluorescent analysis of MCF-7 cells, using AP-2 γ Antibody (green). Actin filaments have been labeled with Alexa Fluor® 555 phalloidin (red).

Storage: Supplied in 10 mM sodium HEPES (pH 7.5), 150 mM NaCl, 100 μ g/ml BSA and 50% glycerol. Store at -20°C. Do not aliquot the antibody.

Recommended Antibody Dilutions:
 Western blotting 1:1000
 Immunofluorescence (IF-IC) 1:400

Companion Products:
 AP-2 α Antibody #3208
 AP-2 β Antibody #2509
 Phototope®-HRP Western Blot Detection System, Anti-rabbit IgG, HRP-linked Antibody #7071
 Anti-rabbit IgG, HRP-linked Antibody #7074
 Prestained Protein Marker, Broad Range (Premixed Format) #7720
 Biotinylated Protein Ladder Detection Pack #7727
 20X LumiGLO® Reagent and 20X Peroxide #7003

IMPORTANT: For Western blots, incubate membrane with diluted antibody in 5% w/v BSA, 1X TBS, 0.1% Tween-20 at 4°C with gentle shaking, overnight.

Western Immunoblotting Protocol (Primary Ab Incubation In BSA)

For Western blots, incubate membrane with diluted antibody in 5% w/v BSA, 1X TBS, 0.1% Tween-20 at 4°C with gentle shaking, overnight.

A Solutions and Reagents

NOTE: Prepare solutions with Milli-Q or equivalently purified water.

- 1X Phosphate Buffered Saline (PBS)
- 1X SDS Sample Buffer:** 62.5 mM Tris-HCl (pH 6.8 at 25°C), 2% w/v SDS, 10% glycerol, 50 mM DTT, 0.01% w/v bromophenol blue or phenol red
- Transfer Buffer:** 25 mM Tris base, 0.2 M glycine, 20% methanol (pH 8.5)
- 10X Tris Buffered Saline (TBS):** To prepare 1 liter of 10X TBS: 24.2 g Tris base, 80 g NaCl; adjust pH to 7.6 with HCl (use at 1X).
- Nonfat Dry Milk (weight to volume [w/v])
- Blocking Buffer:** 1X TBS, 0.1% Tween-20 with 5% w/v nonfat dry milk; for 150 ml, add 15 ml 10X TBS to 135 ml water, mix. Add 7.5 g nonfat dry milk and mix well. While stirring, add 0.15 ml Tween-20 (100%).
- Wash Buffer:** 1X TBS, 0.1% Tween-20 (TBS/T)
- Bovine Serum Albumin (BSA)
- Primary Antibody Dilution Buffer:** 1X TBS, 0.1% Tween-20 with 5% BSA; for 20 ml, add 2 ml 10X TBS to 18 ml water, mix. Add 1.0 g BSA and mix well. While stirring, add 20 µl Tween-20 (100%).
- Phototope[®]-HRP Western Blot Detection System #7071:** Includes biotinylated protein ladder, secondary anti-rabbit (#7074) antibody conjugated to horseradish peroxidase (HRP), anti-biotin antibody conjugated to HRP, LumiGLO[®] chemiluminescent reagent and peroxide.
- Prestained Protein Marker, Broad Range (Premixed Format) #7720
- Biotinylated Protein Ladder Detection Pack #7727
- Blotting Membrane:** This protocol has been optimized for nitrocellulose membranes, which CST recommends. PVDF membranes may also be used.

B Protein Blotting

A general protocol for sample preparation is described below.

- Treat cells by adding fresh media containing regulator for desired time.
- Aspirate media from cultures; wash cells with 1X PBS; aspirate.
- Lyse cells by adding 1X SDS sample buffer (100 µl per well of 6-well plate or 500 µl per plate of 10 cm diameter plate). Immediately scrape the cells off the plate and transfer the extract to a microcentrifuge tube. Keep on ice.
- Sonicate for 10–15 seconds to shear DNA and reduce sample viscosity.
- Heat a 20 µl sample to 95–100°C for 5 minutes; cool on ice.
- Microcentrifuge for 5 minutes.
- Load 20 µl onto SDS-PAGE gel (10 cm x 10 cm).

NOTE: CST recommends loading prestained molecular weight markers (#7720, 10 µl/lane) to verify electrotransfer and biotinylated protein ladder (#7727, 10 µl/lane) to determine molecular weights.

- Electrotransfer to nitrocellulose or PVDF membrane.

C Membrane Blocking and Antibody Incubations

NOTE: Volumes are for 10 cm x 10 cm (100 cm²) of membrane; for different sized membranes, adjust volumes accordingly.

- (Optional) After transfer, wash nitrocellulose membrane with 25 ml TBS for 5 minutes at room temperature.
- Incubate membrane in 25 ml of blocking buffer for 1 hour at room temperature.
- Wash three times for 5 minutes each with 15 ml of TBS/T.
- Incubate membrane and primary antibody (at the appropriate dilution) in 10 ml primary antibody dilution buffer with gentle agitation overnight at 4°C.
- Wash three times for 5 minutes each with 15 ml of TBS/T.
- Incubate membrane with HRP-conjugated secondary antibody (1:2000) and HRP-conjugated anti-biotin antibody (1:1000) to detect biotinylated protein markers in 10 ml of blocking buffer with gentle agitation for 1 hour at room temperature.
- Wash three times for 5 minutes each with 15 ml of TBS/T.

D Detection of Proteins

- Incubate membrane with 10 ml LumiGLO[®] (0.5 ml 20X LumiGLO[®], 0.5 ml 20X Peroxide and 9.0 ml Milli-Q water) with gentle agitation for 1 minute at room temperature.

NOTE: LumiGLO[®] substrate can be further diluted if signal response is too fast.

- Drain membrane of excess developing solution (do not let dry), wrap in plastic wrap and expose to x-ray film. An initial 10-second exposure should indicate the proper exposure time.

NOTE: Due to the kinetics of the detection reaction, signal is most intense immediately following LumiGLO[®] incubation and declines over the following 2 hours.

Immunofluorescence Protocol

***IMPORTANT:** Please refer to the **APPLICATIONS** section on the front page of the data sheet to determine **IF THIS PRODUCT** is validated and approved for the specific protocol you will be using.

A Solutions and Reagents

NOTE: Prepare solutions with Milli-Q or equivalently purified water.

- 1. 10X Phosphate Buffered Saline (PBS):** To prepare 1 L add 80 g sodium chloride (NaCl), 2 g potassium chloride (KCl), 14.4 g sodium phosphate, dibasic (Na_2HPO_4) and 2.4 g potassium phosphate, monobasic (KH_2PO_4) to 1 L dH_2O . Adjust pH to 7.4.
- Formaldehyde, 16%, methanol free, Polysciences, Inc. (cat# 18814), use fresh, store opened vials at 4°C in dark, dilute in PBS for use.
- Xylene
- Ethanol, anhydrous denatured, histological grade, 100% and 95%
- Distilled water (dH_2O)
- 1X PBS/0.3% Triton X-100 (PBS/Triton):** To prepare 1 L, add 100 ml 10X PBS to 900 ml dH_2O . Add 3 ml Triton X-100 and mix.
- 10 mM Sodium Citrate Buffer:** To prepare 1 L, add 2.94 g sodium citrate trisodium salt dihydrate ($\text{C}_6\text{H}_5\text{Na}_3\text{O}_7 \cdot 2\text{H}_2\text{O}$) to 1 L dH_2O . Adjust pH to 6.0.
- 1X PBS, high salt (0.4M) (high salt PBS):** To prepare 1L, add 100 ml 10X PBS to 900 ml dH_2O . Add 23.38 g NaCl and mix.
- Fluorochrome-conjugated secondary antibody

NOTE: When using any primary or fluorochrome-conjugated secondary antibody for the first time, titrate the antibody to determine which dilution allows for the strongest specific signal with the least background for your sample.

- Vectashield Mounting Medium (Vector Labs, Burlingame, CA, cat# H-1000) or Vectashield Mounting Medium with DAPI (cat# H-1200)

B Specimen Preparation

I. Cultured Cell Lines (IF-IC)

IMPORTANT: Please check the **APPLICATIONS** section of the data sheet to verify that this product is validated and approved for **(IF-IC)**.

NOTE: This general fixation protocol will work with most antibodies and cell lines. However, we recommend you try different IF/IC fixation methods (methanol or acetone alone, aldehyde alone, or combinations of these) to identify the optimal fixation protocol for each antibody and/or cell line.

NOTE: Cells should be grown, treated, fixed, and stained directly in multiwell plates, chamber slides, or on coverslips.

- Rinse cells briefly in PBS.
- Aspirate PBS, cover cells to a depth of 2-3 mm with 2-4% formaldehyde in PBS.

NOTE: Formaldehyde is toxic, use only in fume hood.

- Allow cells to fix for 15 minutes at room temperature.
- Aspirate fixative, rinse three times in PBS for 5 minutes each.

OPTION: After formaldehyde fixation, cover cells with ice-cold 100% methanol (use enough to cover cells completely to a depth of 3-5 mm, DO NOT LET CELLS DRY), incubate cells in methanol for 10 minutes in freezer, rinse in PBS for 5 minutes.

- Proceed with Immunostaining section C.

II. Paraffin Sections (IF-P)

IMPORTANT: Please check the **APPLICATIONS** section of the data sheet to verify that this product is validated and approved for **(IF-P)**.

Deparaffinization/Rehydration:

- Incubate sections in three washes of xylene for 5 minutes each.

Orders ■ 877-616-CELL (2355) orders@cellsignal.com

Support ■ 877-678-TECH (8324)

info@cellsignal.com

Web ■ www.cellsignal.com

- Incubate sections in two washes of 100% ethanol for 10 minutes each.
- Incubate sections in two washes of 95% ethanol for 10 minutes each.
- Rinse sections twice in dH_2O for 5 minutes each.

Antigen Unmasking:

- Place slides in room temperature 10 mM sodium citrate buffer pH 6.0.
- Bring slides to boiling in sodium citrate buffer using water bath or microwave, then maintain at 95-99°C for 10 minutes.
- Cool slides for 30 minutes on bench top.
- Rinse sections in dH_2O three times for 5 minutes each.
- Rinse sections in PBS for 5 minutes.
- Proceed with Immunostaining section C.

III. Frozen/Cryostat Sections (IF-F)

IMPORTANT: Please check the **APPLICATIONS** section of the data sheet to verify that this product is validated and approved for **(IF-F)**.

NOTE: Fresh frozen/unfixed sections should be fixed immediately in 2-4% formaldehyde as follows to preserve signaling epitopes.

- Cover sections with 2-4% formaldehyde in PBS

NOTE: Formaldehyde is toxic, use only in fume hood.

- Allow cells to fix for 15 minutes at room temperature.
- Rinse slides three times in PBS for 5 minutes each.

C Immunostaining

NOTE: All subsequent incubations should be carried out at room temperature unless otherwise noted in a humid light-tight box or covered dish/plate to prevent drying and fluorochrome fading.

- Block specimen in 5% normal serum from same species as secondary antibody (eg. normal goat serum, normal donkey serum) in PBS/Triton for 60 minutes.
- While blocking, prepare primary antibody by diluting as indicated on datasheet in PBS/Triton. You will need 50-100 μl per section, 25-50 μl per coverslip, chamber, or well (48 or 96 well plate).
- Aspirate blocking solution, apply diluted primary antibody.

NOTE: For double-labeling, prepare a cocktail of mouse and rabbit primary antibodies at their appropriate dilutions in PBS/Triton.

- Incubate overnight at 4°C.
- Rinse three times in PBS for 5 minutes each.

OPTION: To decrease background stain, rinse in high salt PBS for two minutes between second and third PBS rinses. Be aware, this may reduce specific staining of some antibodies.

NOTE: If using primary antibodies directly conjugated with AlexaFluor® fluorochromes, then skip to step C8.

- Incubate in fluorochrome-conjugated secondary antibody diluted in PBS/Triton for 1-2 hours at room temperature in dark.

NOTE: For double-labeling, prepare a cocktail of fluorochrome-conjugated anti-mouse and anti-rabbit primary antibodies at their appropriate dilutions in PBS/Triton.

- Rinse in PBS/high salt PBS as in step 5.
- Coverslip slides with Vectashield Mounting Medium or apply just enough to cover cells in multiwell plate.
- Seal slides by painting around edges of coverslips with nail polish.
- Examine specimens immediately using appropriate excitation wavelength, depending on fluorochrome for best results or store flat at 4°C in dark.