

# HA-Tag (6E2) Mouse mAb

✓ 100 µl  
(10 western blots)

**Orders** ■ 877-616-CELL (2355)  
orders@cellsignaling.com  
**Support** ■ 877-678-TECH (8324)  
info@cellsignaling.com  
**Web** ■ www.cellsignaling.com

rev. 07/14/10

This product is intended for research purposes only. This product is not intended to be used for therapeutic or diagnostic purposes in humans or animals.

Applications	Species Cross-Reactivity*	Isotype
W, IHC-P, IF-IC, F Transfected	All	Mouse IgG1**

**Background:** Epitope tags are useful for the labeling and detection of proteins using immunoblotting, immunoprecipitation and immunostaining techniques. Due to their small size, they are unlikely to affect the tagged protein's biochemical properties.

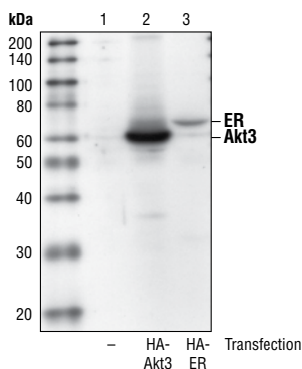
The HA tag is derived from an epitope of the influenza hemagglutinin protein, which has been extensively used as a general epitope tag in expression vectors (1).

**Specificity/Sensitivity:** HA-Tag (6E2) Mouse mAb detects recombinant proteins containing the HA epitope tag. The antibody recognizes the HA-tag fused to either the amino or carboxy terminus of targeted proteins in transfected cells.

**Source/Purification:** Monoclonal antibody is produced by immunizing animals with a synthetic peptide containing the influenza hemagglutinin epitope (YPYDVPDYA).

**Background References:**

(1) Field, J. et al. (1988) *Mol. Cell. Biol.* 8, 2159-2165.



Western blot analysis of extracts from COS cells, untransfected (lane 1) or expressing HA-tagged Akt3 (lane 2) or HA-tagged Estrogen Receptor (ER) (lane 3), using HA-Tag (6E2) Mouse mAb.

Swiss-Prot Acc. #P03437

**Storage:** Supplied in 10 mM sodium HEPES (pH 7.5), 150 mM NaCl, 100 µg/ml BSA, 50% glycerol and less than 0.02% sodium azide. Store at -20°C. Do not aliquot the antibody.

\*Species cross-reactivity is determined by western blot.

\*\*Anti-mouse secondary antibodies must be used to detect this antibody.

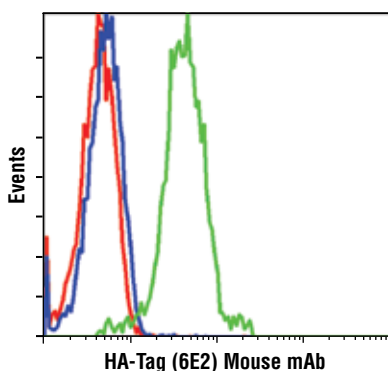
**Recommended Antibody Dilutions:**

Western blotting	1:1000
Immunohistochemistry (Paraffin)	1:1200
Unmasking buffer:	Citrate
Antibody diluent:	SignalStain® Antibody Diluent #8112
Immunofluorescence (IF-IC)	1:100
Flow Cytometry	1:50

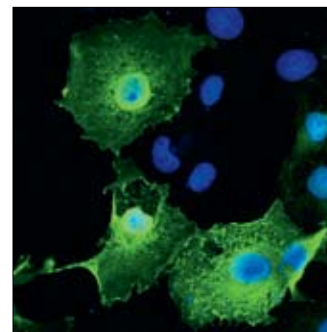
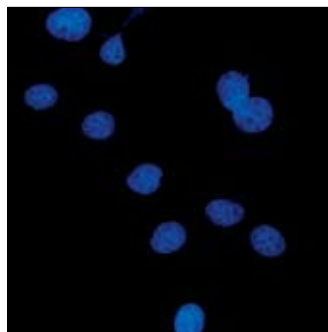
For application specific protocols please see the web page for this product at [www.cellsignaling.com](http://www.cellsignaling.com).

Please visit [www.cellsignaling.com](http://www.cellsignaling.com) for a complete listing of recommended companion products.

DRAQ5® is a registered trademark of Biostatus Limited.



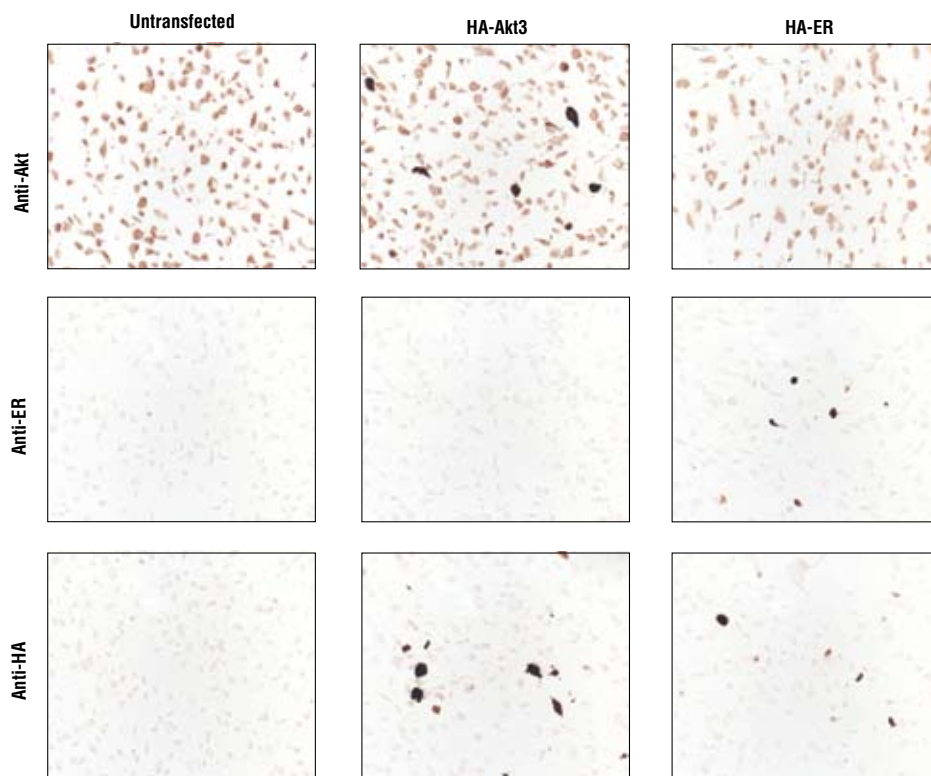
Flow cytometric analysis of COS cells, untransfected (blue) or transfected with HA-Akt3 (green), using HA-Tag (6E2) Mouse mAb compared to a nonspecific negative control antibody (red).



Confocal immunofluorescent analysis of COS cells, transfected with a Ha-tagged protein (left) or mock-transfected (right), using HA-Tag (6E2) Mouse mAb (green). Blue pseudocolor = DRAQ5® #4084 (fluorescent DNA dye).

**IMPORTANT: For western blots, incubate membrane with diluted antibody in 5% w/v nonfat dry milk, 1X TBS, 0.1% Tween-20 at 4°C with gentle shaking, overnight.**

**Applications Key:** W—Western IP—Immunoprecipitation IHC—Immunohistochemistry ChIP—Chromatin Immunoprecipitation IF—Immunofluorescence F—Flow cytometry E-P—ELISA-Peptide  
**Species Cross-Reactivity Key:** H—human M—mouse R—rat Hm—hamster Mk—monkey Mi—mink C—chicken Dm—D. melanogaster X—Xenopus Z—zebrafish B—bovine  
Dg—dog Pg—pig Sc—S. cerevisiae Ce—C. elegans Hr—Horse All—all species expected Species enclosed in parentheses are predicted to react based on 100% homology.



*Immunohistochemical analysis of paraffin-embedded COS cells, untransfected (left), HA-Akt3 transfected (middle) or HA-Estrogen Receptor transfected (right), using an Akt antibody (top), an Estrogen Receptor antibody (middle) or HA-Tag (6E2) Mouse mAb (bottom).*