

# Phospho-IRS-1 (Ser1101) Antibody

✓ 100 µl  
(10 western blots)

**Orders** ■ 877-616-CELL (2355)  
orders@cellsignal.com  
**Support** ■ 877-678-TECH (8324)  
info@cellsignal.com  
**Web** ■ www.cellsignal.com

rev. 07/30/10

This product is intended for research purposes only. This product is not intended to be used for therapeutic or diagnostic purposes in humans or animals.

Applications	Species Cross-Reactivity*	Molecular Wt.	Source
W, IP Endogenous	H, M, R	180 kDa	Rabbit**

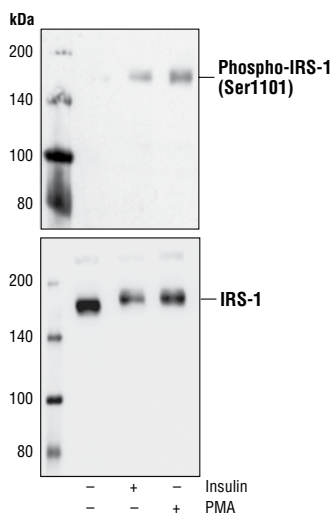
**Background:** Insulin receptor substrate 1 (IRS-1) is one of the major substrates of the insulin receptor kinase (1). IRS-1 contains multiple tyrosine phosphorylation motifs that serve as docking sites for SH2 domain containing proteins that mediate the metabolic and growth promoting functions of insulin (2-4). IRS-1 also contains over 30 potential serine/threonine phosphorylation sites. Ser307 of IRS-1 is phosphorylated by JNK (5) and IKK (6) while Ser789 is phosphorylated by SIK-2, a member of the AMPK family (7). The PKC and mTOR pathways mediate phosphorylation of IRS-1 at Ser612 and Ser636/639, respectively (8,9). Phosphorylation of IRS-1 at Ser1101 is mediated by PKCθ and results in an inhibition of insulin signaling in the cell, suggesting a potential mechanism for insulin resistance in some models of obesity (10).

**Specificity/Sensitivity:** Phospho-IRS-1 (Ser1101) Antibody detects endogenous IRS-1 protein only when phosphorylated at serine 1101. The antibody cross-reacts with IRS-2. US Patent No. 7,731,964 and foreign equivalents assigned to Cell Signaling Technology, Inc.

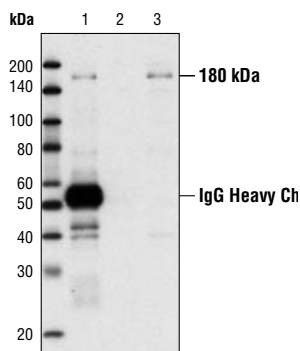
**Source/Purification:** Polyclonal antibodies are produced by immunizing animals with a synthetic peptide corresponding to residues surrounding Ser1101 of human IRS-1. Antibodies are purified by protein A and peptide affinity chromatography.

**Background References:**

- (1) Sun, X.J. et al. (1991) *Nature* 352, 73-77.
- (2) Sun, X.J. et al. (1992) *J. Biol. Chem.* 267, 22662-22672.
- (3) Myers Jr., M.G. et al. (1993) *Endocrinology* 132, 1421-1430.
- (4) Wang, L.M. et al. (1993) *Science* 261, 1591-1594.
- (5) Rui, L. et al. (1997) *J. Clin. Invest.* 107, 181-189.
- (6) Gao, Z. et al. (2002) *J. Biol. Chem.* 277, 48115-48121.
- (7) Horike, N. et al. (2003) *J. Biol. Chem.* 278, 18440-18447.
- (8) Ozes, O.N. et al. (2001) *Proc. Natl. Acad. Sci. USA* 98, 4640-4645.
- (9) De Fea, K. and Ruth, R.A. (1997) *Biochemistry* 36, 12939-12947.
- (10) Li, Y. et al. (2004) *J. Biol. Chem.* 279, 45304-45307.



Western blot analysis of IRS-1 antibody-immunoprecipitated pellets from differentiated C2C12 cells, unstimulated, insulin-stimulated (100 nM for 15 min) or PMA-stimulated (200 mM for 30 min), using Phospho-IRS-1 (Ser1101) Antibody (upper) or IRS-1 Antibody #2382 (lower).



Immunoprecipitation of Phospho-IRS-1 from insulin treated MCF7 cell extracts using Phospho-IRS-1 (Ser1101) antibody (Lane 1). Lane 2: No antibody control. Lane 3: Input control.

Entrez-Gene ID #3667  
Swiss-Prot Acc. #P35568

**Storage:** Supplied in 10 mM sodium HEPES (pH 7.5), 150 mM NaCl, 100 µg/ml BSA and 50% glycerol. Store at -20°C. Do not aliquot the antibody.

\*Species cross-reactivity is determined by western blot.

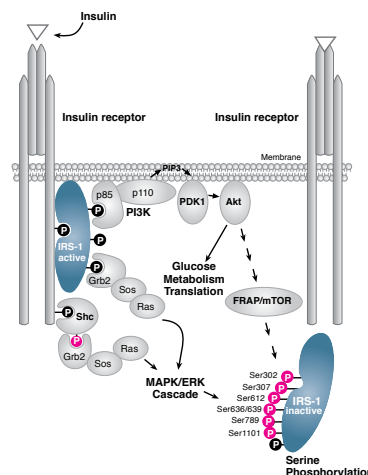
\*\*Anti-rabbit secondary antibodies must be used to detect this antibody.

**Recommended Antibody Dilutions:**

Western blotting	1:1000
Immunoprecipitation	1:50

For application specific protocols please see the web page for this product at [www.cellsignal.com](http://www.cellsignal.com).

Please visit [www.cellsignal.com](http://www.cellsignal.com) for a complete listing of recommended companion products.



IRS-1 Signaling Pathway

**IMPORTANT: For western blots, incubate membrane with diluted antibody in 5% w/v BSA, 1X TBS, 0.1% Tween-20 at 4°C with gentle shaking, overnight.**

**Applications Key:** W—Western IP—Immunoprecipitation IHC—Immunohistochemistry ChIP—Chromatin Immunoprecipitation IF—Immunofluorescence F—Flow cytometry E-P—ELISA-Peptide  
**Species Cross-Reactivity Key:** H—human M—mouse R—rat Hm—hamster Mk—monkey Mi—mink C—chicken Dm—D. melanogaster X—Xenopus Z—zebrafish B—bovine  
Dg—dog Pg—pig Sc—S. cerevisiae Ce—C. elegans Hr—horse All—all species expected Species enclosed in parentheses are predicted to react based on 100% homology.