

#2396 Store at -20°C

MBP (8G1) Mouse mAb

100 µl
 (10 Western mini-blot)



Orders ■ 877-616-CELL (2355)
 orders@cellsignal.com
Support ■ 877-678-TECH (8324)
 info@cellsignal.com
Web ■ www.cellsignal.com

rev. 12/11/07

This product is for *in vitro* research use only and is not intended for use in humans or animals.

Applications	Species Cross-Reactivity*	Source	Isotype
W, IP, IF-IC	All	Mouse	IgG1

Background: Epitope tags are useful for the labeling and detection of proteins using immunoblotting, immunoprecipitation and immunostaining techniques. Due to their small size, they are unlikely to affect the tagged protein's biochemical properties.

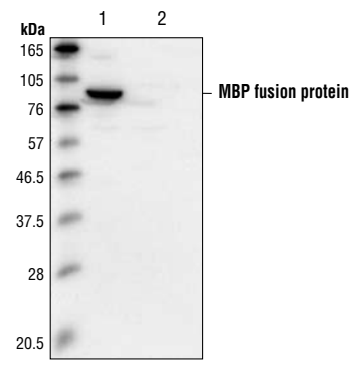
One commonly used system is the maltose-binding protein (MBP) (1). In this system, the target gene is inserted in the appropriate vector and expressed. Following purification using an amylose column, the MBP-target protein complex can be eluted from the column with maltose and cleaved with a specific protease to yield the purified target protein (2). An antibody to MBP can also be used to isolate or detect expression of the protein.

Specificity/Sensitivity: MBP (8G1) Mouse mAb detects recombinant proteins fused to maltose binding protein (MBP).

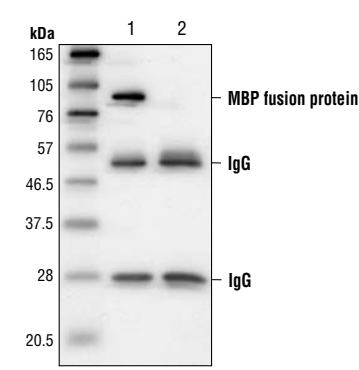
Source/Purification: Monoclonal antibody is produced by immunizing mice with an MBP fusion protein.

Background References:

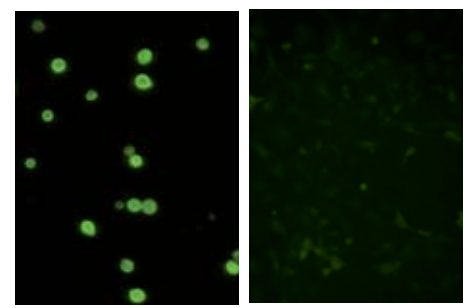
- (1) di Guan, C. et al. (1988) *Gene* 67, 21–30.
- (2) Kellermann, O.K. and Ferenci, T. (1982) *Methods Enzymol.* 90, 459–463.



Western blot analysis of Sf9 insect cells expressing MBP fusion protein (lane 1) or cells without transfection (lane 2), using MBP (8G1) Mouse mAb.



Immunoprecipitation of Sf9 insect cell extract overexpressing MBP fusion protein (lane 1) or cells without transfection (lane 2), using MBP (8G1) Mouse mAb, then Western analysis using the same antibody.



Immunocytochemical staining of Sf9 insect cells expressing MBP fusion protein (left) or cells without transfection (right), using MBP (8G1) Mouse mAb.

Storage: Supplied in 10 mM sodium HEPES (pH 7.5), 150 mM NaCl, 100 µg/ml BSA, 50% glycerol and less than 0.02% sodium azide. Store at -20°C. Do not aliquot the antibody.

***Species cross-reactivity is determined by Western blot.**

Recommended Antibody Dilutions:

Western Blotting	1:1000
Immunoprecipitation	1:200
Immunofluorescence (IF-IC)	1:200

Companion Products:

- Myc-Tag Antibody #2272
- Myc-Tag (9B11) Mouse mAb #2276
- His-Tag Antibody #2365
- HA-Tag (6E2) Mouse mAb #2367
- β-Gal (14B7) Mouse mAb #2372
- Phototope®-HRP Western Blot Detection System, Anti-mouse IgG, HRP-linked Antibody #7072
- Anti-mouse IgG, HRP-linked Antibody #7076
- Prestained Protein Marker, Broad Range (Premixed Format) #7720
- Biotinylated Protein Ladder Detection Pack #7727
- 20X LumiGLO® Reagent and 20X Peroxide #7003

IMPORTANT: For Western blots, incubate membrane with diluted antibody in 5% w/v nonfat dry milk, 1X TBS, 0.1% Tween-20 at 4°C with gentle shaking, overnight.

Applications Key: W—Western IP—Immunoprecipitation IHC—Immunohistochemistry IC—Immunocytochemistry IF—Immunofluorescence
Species Cross-Reactivity Key: H—human M—mouse R—rat Hm—hamster Mk—monkey Mi—mink C—chicken X—Xenopus
 Species enclosed in parentheses are predicted to react based on 100% sequence homology.

Western Immunoblotting Protocol (Primary Antibody Incubation in Milk)

For Western blots, incubate membrane with diluted antibody in 5% w/v nonfat dry milk, 1X TBS, 0.1% Tween-20 at 4°C with gentle shaking, overnight.

A Solutions and Reagents

NOTE: Prepare solutions with Milli-Q or equivalently purified water.

- 1X Phosphate Buffered Saline (PBS)
- 1X SDS Sample Buffer:** 62.5 mM Tris-HCl (pH 6.8 at 25°C), 2% w/v SDS, 10% glycerol, 50 mM DTT, 0.01% w/v bromophenol blue or phenol red
- Transfer Buffer:** 25 mM Tris base, 0.2 M glycine, 20% methanol (pH 8.5)
- 10X Tris Buffered Saline (TBS):** To prepare 1 liter of 10X TBS: 24.2 g Tris base, 80 g NaCl; adjust pH to 7.6 with HCl (use at 1X).
- Nonfat Dry Milk (weight to volume [w/v])
- Blocking Buffer:** 1X TBS, 0.1% Tween-20 with 5% w/v nonfat dry milk; for 150 ml, add 15 ml 10X TBS to 135 ml water, mix. Add 7.5 g nonfat dry milk and mix well. While stirring, add 0.15 ml Tween-20 (100%).
- Wash Buffer:** 1X TBS, 0.1% Tween-20 (TBS/T)
- Primary Antibody Dilution Buffer:** 1X TBS, 0.1% Tween-20 with 5% nonfat dry milk; for 20 ml, add 2 ml 10X TBS to 18 ml water, mix. Add 1.0 g nonfat dry milk and mix well. While stirring, add 20 µl Tween-20 (100%).
- Phototope®-HRP Western Blot Detection System #7072:** Includes biotinylated protein ladder, secondary anti-mouse (#7076) antibody conjugated to horseradish peroxidase (HRP), anti-biotin antibody conjugated to HRP, LumiGLO® chemiluminescent reagent and peroxide.
- Prestained Protein Marker, Broad Range (Premixed Format) #7720
- Biotinylated Protein Ladder Detection Pack #7727
- Blotting Membrane:** This protocol has been optimized for nitrocellulose membranes, which CST recommends. PVDF membranes may also be used.

B Protein Blotting

A general protocol for sample preparation is described below.

- Treat cells by adding fresh media containing regulator for desired time.
- Aspirate media from cultures; wash cells with 1X PBS; aspirate.
- Lyse cells by adding 1X SDS sample buffer (100 µl per well of 6-well plate or 500 µl per plate of 10 cm diameter plate). Immediately scrape the cells off the plate and transfer the extract to a microcentrifuge tube. Keep on ice.
- Sonicate for 10–15 seconds to shear DNA and reduce sample viscosity.
- Heat a 20 µl sample to 95–100°C for 5 minutes; cool on ice.
- Microcentrifuge for 5 minutes.
- Load 20 µl onto SDS-PAGE gel (10 cm x 10 cm).

NOTE: CST recommends loading prestained molecular weight marker (#7720, 10 µl/lane) to verify electrotransfer and biotinylated protein ladder (#7727, 10 µl/lane) to determine molecular weights.

- Electrotransfer to nitrocellulose or PVDF membrane.

C Membrane Blocking and Antibody Incubations

NOTE: Volumes are for 10 cm x 10 cm (100 cm²) of membrane; for different sized membranes, adjust volumes accordingly.

- (Optional) After transfer, wash nitrocellulose membrane with 25 ml TBS for 5 minutes at room temperature.
- Incubate membrane in 25 ml of blocking buffer for 1 hour at room temperature.
- Wash three times for 5 minutes each with 15 ml of TBS/T.
- Incubate membrane and primary antibody (at the appropriate dilution) in 10 ml primary antibody dilution buffer with gentle agitation overnight at 4°C.
- Wash three times for 5 minutes each with 15 ml of TBS/T.
- Incubate membrane with HRP-conjugated secondary antibody (1:2000) and HRP-conjugated anti-biotin antibody (1:1000) to detect biotinylated protein markers in 10 ml of blocking buffer with gentle agitation for 1 hour at room temperature.
- Wash three times for 5 minutes each with 15 ml of TBS/T.

D Detection of Proteins

- Incubate membrane with 10 ml LumiGLO® (0.5 ml 20X LumiGLO®, 0.5 ml 20X Peroxide and 9.0 ml Milli-Q water) with gentle agitation for 1 minute at room temperature.

NOTE: LumiGLO® substrate can be further diluted if signal response is too fast.

- Drain membrane of excess developing solution (do not let dry), wrap in plastic wrap and expose to x-ray film. An initial 10-second exposure should indicate the proper exposure time.

NOTE: Due to the kinetics of the detection reaction, signal is most intense immediately following LumiGLO® incubation and declines over the following 2 hours.

Immunoprecipitation Protocol / (For Analysis By Western Immunoblotting)

A Solutions and Reagents

NOTE: Prepare solutions with Milli-Q or equivalently purified water.

1. 1X Phosphate Buffered Saline (PBS)
2. **1X Cell Lysis Buffer:** 20 mM Tris (pH 7.5), 150 mM NaCl, 1 mM EDTA, 1 mM EGTA, 1% Triton X-100, 2.5 mM Sodium pyrophosphate, 1 mM β -glycerophosphate, 1 mM Na_3VO_4 , 1 $\mu\text{g/ml}$ Leupeptin

NOTE: Add 1 mM PMSF immediately prior to use.

1. **Transfer Buffer:** 25 mM Tris base, 0.2 mM glycine, 20% methanol (pH 8.5)
2. **Protein A or G Agarose Beads:** (Can be stored for 2 weeks at 4°C.) Please prepare according to manufacturer's instructions. Use Protein A for rabbit IgG pull down and Protein G for mouse IgG pull down.
3. **3X SDS Sample Buffer:** 187.5 mM Tris-HCl (pH 6.8 at 25°C), 6% w/v SDS, 30% glycerol, 150 mM DTT, 0.03% w/v bromophenol blue

B Preparing Cell Lysates

1. Aspirate media. Treat cells by adding fresh media containing regulator for desired time.
2. To harvest cells under nondenaturing conditions, remove media and rinse cells once with ice-cold PBS.
3. Remove PBS and add 0.5 ml ice-cold 1X cell lysis buffer to each plate (10 cm) and incubate the plates on ice for 5 minutes.
4. Scrape cells off the plates and transfer to microcentrifuge tubes. Keep on ice.
5. Sonicate samples on ice three times for 5 seconds each.
6. Microcentrifuge for 10 minutes at 14,000 X g, 4°C, and transfer the supernatant to a new tube. If necessary, lysate can be stored at -80°C.

C Immunoprecipitation

Optional: It may be necessary to perform a lysate pre-clearing step to reduce non-specific binding to the Protein A/G agarose beads (See section below).

1. Take 200 μl cell lysate and add primary antibody. Incubate with gentle rocking overnight at 4°C.
2. Add either protein A or G agarose beads (20 μl of 50% bead slurry). Incubate with gentle rocking for 1–3 hours at 4°C.
3. Microcentrifuge for 30 seconds at 4°C. Wash pellet five times with 500 μl of 1X cell lysis buffer. Keep on ice during washes.
4. Resuspend the pellet with 20 μl 3X SDS sample buffer. Vortex, then microcentrifuge for 30 seconds.
5. Heat the sample to 95–100°C for 2–5 minutes and microcentrifuge for 1 minute at 14,000 X g.
6. Load the sample (15–30 μl) on SDS-PAGE gel (12–15%).
7. Analyze sample by Western blotting (see Western Immunoblotting Protocol).

Cell Lysate Pre-Clearing (Optional)

1. Take 200 μl cell lysate and add to either Protein A or G agarose beads (20 μl of 50% bead slurry).
2. Incubate at 4°C for 30 – 60 minutes.
3. Spin for 10 minutes at 4°C. Transfer the supernatant to a fresh tube.
4. Proceed to step 1 of Immunoprecipitation.

Immunocytochemistry Protocol for Immunofluorescence

This procedure works well when cells are grown in 6-well tissue culture plates containing sterile coverslips in the appropriate media and concentration of fetal bovine serum (FBS). If desired, provide extra coverslips for cell staining controls.

A Solutions and Reagents

NOTE: Prepare solutions with Milli-Q or equivalently purified water.

1. Fetal Bovine Serum (FBS)
2. **10X Phosphate Buffered Saline (PBS):** To prepare 1L add 80 g sodium chloride (NaCl), 2 g potassium chloride (KCl), 14.4 g sodium phosphate, dibasic (Na_2HPO_4) and 2.4 g potassium phosphate, monobasic (KH_2PO_4) to 1 L dH_2O . Adjust pH to 7.4.
3. **4% Paraformaldehyde:** Prepare day of use either from commercial 16% stock solution or by dissolving paraformaldehyde in 1X PBS by heating at 60°C and stirring until it dissolves. Cool before use.
4. **Tris Buffered Saline (TBS):** 50 mM Tris-HCl (pH 7.4), 150 mM NaCl.
5. **0.1% Sodium Borohydride:** Dissolve in PBS on day of use.
6. **0.2% Triton X-100:** Prepare stock of 20% Triton in PBS; rotate tube overnight to dissolve. Dilute to 0.2%.
7. 1% Bovine Serum Albumin (BSA)
8. **Blocking Buffer:** 10% horse or goat serum, 1% BSA, 0.02% NaN₃, 1X PBS.
9. **ProLong™ Antifade Kit:** As directed by Molecular Probes (#P-7481), prepare just before use. Add approximately 1 ml of ProLong mounting medium to one vial of ProLong antifade reagent. Mix gently. Any unused mixture can be stored at -20°C (to slow reaction) for up to one month.

B Fixation

1. Prepare 4% paraformaldehyde and/or cool 100% methanol to -20°C in a tightly sealed container.
2. Treat cells as desired.
3. Wash cells on coverslips once with cool or room temperature TBS.
4. Aspirate off TBS completely and immediately fix as appropriate for your samples.

C Methanol (protein precipitation) Fixation

1. Immerse coverslips in -20°C 100% methanol for 10 minutes.
2. Rinse slips three times for 5 minutes each with room temperature TBS.
3. Quench cells in fresh 0.1% sodium borohydride in TBS for 5 minutes.
4. Wash slips three times for 5 minutes each with room temperature TBS. Aspirate off completely and return slips to TBS only. Continue protocol at "Blocking" step E1.

D Paraformaldehyde (cross-linking) Fixation

1. Immerse coverslips in 4% paraformaldehyde at room temperature for 10 minutes.
2. Wash coverslips once with TBS. Aspirate completely and then permeabilize cells on coverslips with 0.2% Triton X-100 for 5 minutes at room temperature or alternatively with -20°C methanol for 5 minutes.
3. Wash slips three times for 5 minutes each with TBS at room temperature.
4. Quench cells in fresh 0.1% sodium borohydride in TBS for 5 minutes. Aspirate off completely and return slips to TBS only. Continue protocol at blocking step.

E Blocking

1. Block all slips with blocking buffer at room temperature for 45–60 minutes. Wash once for 5 minutes with TBS.

F Staining

1. Dilute the primary antibody as appropriate in 1% BSA in TBS. Centrifuging the antibody for 20 minutes at 12,000 x g in a refrigerated microcentrifuge prior to use will remove any aggregated material, thereby reducing background. Apply the diluted antibody to the cells on coverslips and, most critically, incubate overnight at 4°C.

NOTE: When using any primary or fluorescence-labeled secondary antibody for the first time, titrate out the antibody to determine which dilution allows for the strongest specific signal with the least background for your sample.

NOTE: You may wish to leave one slip for a secondary antibody-only control.

2. Wash all slips three times for 5 minutes each with TBS.
3. Incubate all slips with a dilution of the fluorescence-labeled secondary antibody in 1% BSA in TBS for 30–45 minutes at room temperature in the dark.
4. Wash all slips three times for 5 minutes each with TBS in low lighting conditions.
5. Mount coverslips on slides using the ProLong™ Antifade Kit. Store slides at room temperature in the dark.