

#2414 Store at -20°C

# Rab11b Antibody

✓ 100 µl  
(10 western blots)



**Orders** ■ 877-616-CELL (2355)  
orders@cellsignal.com  
**Support** ■ 877-678-TECH (8324)  
info@cellsignal.com  
**Web** ■ www.cellsignal.com

rev. 1/19/10

This product is intended for research purposes only. This product is not intended to be used for therapeutic or diagnostic purposes in humans or animals.

Applications W Endogenous	Species Cross-Reactivity* H, M, R, B	Molecular Wt. 25 kDa	Source Rabbit**
---------------------------------	---	-------------------------	--------------------

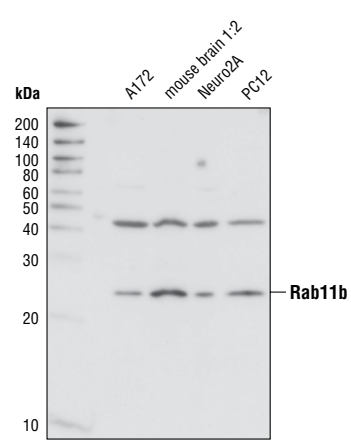
**Background:** Rab11a, Rab11b and Rab25 are three members of the Rab11 family of small Ras-like GTPase. Rab11 (Rab11a and Rab11b) functions as a key regulator for the recycling of endosomes localized to perinuclear, plasma membrane and Golgi compartment (1,2). Rab11a is universal expressed and Rab11b is expressed mainly in the heart and brain. Even though they overlap at some degree, distinct differences between Rab11a and Rab11b in their cellular distribution and functional role have been reported (3,4). Like other Rab proteins, Rab11 exert its function via interactions with the Rab11 effector proteins (FIPs). There are three classes of Rab11 interacting proteins (FIPs), all of them have a conserved carboxy-terminal Rab-binding domain (RBD) which selectively recognize the active form of Rab11 for targeting Rab11 to specific vesicle docking site (5,6).

**Specificity/Sensitivity:** Rab11b Antibody detects endogenous levels of total Rab11b protein.

**Source/Purification:** Polyclonal antibodies are produced by immunizing animals with a synthetic peptide (KLH-coupled) corresponding residue surrounding Arg184 of human Rab11b protein. Antibodies are purified by protein A and peptide affinity chromatography.

### Background References:

- (1) Ullrich, O. et al. (1996) *J. Cell Biol.* 135, 913–924.
- (2) Chen, W. et al. (1998) *Mol. Biol. Cell* 9, 3241–3257.
- (3) Lapierre, L.A. et al. (2003) *Exp. Cell Res.* 290, 322–331.
- (4) Khvotchev, M.V. et al. (2003) *J. Neurosci.* 23, 10531–10539.
- (5) Junutula, J.R. et al. (2004) *J. Biol. Chem.* 279, 33430–33437.
- (6) Hales, C.M. et al. (2001) *J. Biol. Chem.* 276, 39067–39075.



Western blot analysis of extracts from various cell lines using Rab11b Antibody.

Entrez-Gene ID #8766  
Swiss-Prot Acc. #P62491

**Storage:** Supplied in 10 mM sodium HEPES (pH 7.5), 150 mM NaCl, 100 µg/ml BSA and 50% glycerol. Store at -20°C. Do not aliquot the antibody.

\*Species cross-reactivity is determined by Western blot.

\*\*Anti-rabbit secondary antibodies must be used to detect this antibody.

**Recommended Antibody Dilutions:**  
Western blotting 1:1000

For application specific protocols please see the web page for this product at [www.cellsignal.com](http://www.cellsignal.com).

Please visit [www.cellsignal.com](http://www.cellsignal.com) for a complete listing of recommended companion products.

**IMPORTANT: For Western blots, incubate membrane with diluted antibody in 5% w/v nonfat dry milk, 1X TBS, 0.1% Tween-20 at 4°C with gentle shaking, overnight.**

**Applications Key:** W—Western IP—Immunoprecipitation IHC—Immunohistochemistry ChIP—Chromatin Immunoprecipitation IF—Immunofluorescence F—Flow cytometry E-P—ELISA-Peptide  
**Species Cross-Reactivity Key:** H—human M—mouse R—rat Hm—hamster Mk—monkey Mi—mink C—chicken Dm—D. melanogaster X—Xenopus Z—zebrafish B—bovine  
 Dg—dog Pg—pig Sc—S. cerevisiae Ce—C. elegans Hr—horse All—all species expected Species enclosed in parentheses are predicted to react based on 100% homology.