

Notch2 (8A1) Rabbit mAb

✓ 100 µl
(10 Western mini-blots)

rev. 09/12/08

This product is for *in vitro* research use only and is not intended for use in humans or animals.
This product is not intended for use as a therapeutic or in diagnostic procedures.

Orders ■ 877-616-CELL (2355)
orders@cellsignaling.com
Support ■ 877-678-TECH (8324)
info@cellsignaling.com
Web ■ www.cellsignaling.com

Applications	Species Cross-Reactivity*	Molecular Wt.	Isotype
W, IP Endogenous	H	230, 300 kDa	Rabbit IgG**

Background: Notch1 is a transmembrane protein functioning in development and the determination of cell-fate (1). During maturation, the notch molecule is cleaved by a furin-like convertase at its extracellular domain (2). Upon binding to a ligand such as Delta1, or upon extracellular calcium depletion, the carboxy-terminal notch1 fragment is released and further cleaved between Gly1743 and Val1744 (3,4). The resulting activated cytosolic fragment translocates to the nucleus where it activates transcription.

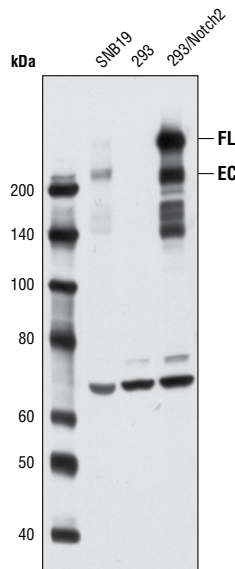
Notch2 is a member of Notch family and mutation in Notch2 is associated with Alagille syndrome (5).

Specificity/Sensitivity: Notch2 (8A1) Rabbit mAb detects endogenous levels of total Notch2 protein.

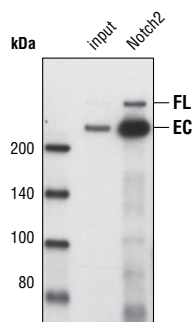
Source/Purification: Monoclonal antibody is produced by immunizing rabbits with a recombinant protein consisting of the heterodimerization domain of human Notch2.

Background References:

- (1) Artavanis-Tsakonas, S. et al. (1999) *Science* 284, 770–776.
- (2) Chan, Y.M. and Jan, Y.N. (1998) *Cell* 94, 423–426.
- (3) Schroeter, E.H. et al. (1998) *Nature* 393, 382–386.
- (4) Rand, M.D. et al. (2000) *Mol. Cell. Biol.* 20, 1825–1835.
- (5) McDaniel, R. et al. (2006) *Am J Hum Genet* 79, 169–73.



Western blot analysis of extracts from SNB19 and 293 cells, untreated or stably expressing human Notch2, using Notch2 (8A1) Rabbit mAb. The full-length (FL) and the extracellular domain (EC) of Notch2 are indicated.



Immunoprecipitation of endogenous Notch2 from 8MGBA cell lysates using Notch2 (8A1) Rabbit mAb. Lane 1 contains lysate input and lane 2 was immunoprecipitated with Notch2 (8A1) Rabbit mAb. Western blot detection was performed using the same antibody.

IMPORTANT: For Western blots, incubate membrane with diluted antibody in 5% w/v BSA, 1X TBS, 0.1% Tween-20 at 4°C with gentle shaking, overnight.

Applications Key: W—Western IP—Immunoprecipitation IHC—Immunohistochemistry ChIP—Chromatin Immunoprecipitation IF—Immunofluorescence F—Flow cytometry E-P—ELISA—Peptide

Species Cross-Reactivity Key: H—human M—mouse R—rat Hm—hamster Mk—monkey Mi—mink C—chicken Dm—D. melanogaster X—Xenopus Z—zebra fish B—bovine

Dg—dog Pg—pig Sc—S. cerevisiae All—all species expected Species enclosed in parentheses are predicted to react based on 100% homology.

Entrez-Gene ID #4853
Swiss-Prot Acc. #Q04721

Storage: Supplied in 10 mM sodium HEPES (pH 7.5), 150 mM NaCl, 100 µg/ml BSA, 50% glycerol and less than 0.02% sodium azide. Store at -20°C. Do not aliquot the antibody.

*Species cross-reactivity is determined by Western blot.

**Anti-rabbit secondary antibodies must be used to detect this antibody.

Recommended Antibody Dilutions:

Western Blotting 1:1000
Immunoprecipitation 1:50

For application specific protocols please see the web page for this product at www.cellsignaling.com.

Companion Products:

Cleaved Notch 1 (Val1744) Antibody #2421

Notch1 (6A5) Rabbit mAb #2495

Notch4 (L5C5) Mouse mAb #2423

DLL1 Antibody #2588

DLL3 (G93) Antibody #2483

Jagged1 (1C4) Rabbit mAb #2155

Jagged1 (28H8) Rabbit mAb #2620

Jagged2 (C23D2) Rabbit mAb #2210

Jagged2 (C83A8) Rabbit mAb #2205

Phototope®-HRP Western Blot Detection System, Anti-rabbit IgG, HRP-linked Antibody #7071

Anti-rabbit IgG, HRP-linked Antibody #7074

Prestained Protein Marker, Broad Range (Premixed Format) #7720

Biotinylated Protein Ladder #7727

Please visit www.cellsignaling.com for a complete listing of recommended companion products.

