

#2425 Store at -20°C

eIF4A (F52) Antibody



100 µl
 (10 Western mini-blot)

Orders ■ 877-616-CELL (2355)
 orders@cellsignaling.com
Support ■ 877-678-TECH (8324)
 info@cellsignaling.com
Web ■ www.cellsignaling.com

rev. 10/15/07

This product is for *in vitro* research use only and is not intended for use in humans or animals.

Applications	Species Cross-Reactivity	Molecular Wt.	Source
W	H, M, R, Mk	48 kDa	Rabbit

Background: A variety of factors contribute to the important biological event of initiation of translation. The eIF4F complex of translation initiation factors binds to the 5' m⁷ GTP cap to open up the mRNA secondary structure and allow small ribosome subunit binding (1). eIF4A, an eIF4 complex component that acts as an ATP-dependent RNA helicase, unwinds the secondary structure of the 5' mRNA untranslated region to mediate ribosome binding (2,3). In addition, eIF4A has recently been shown to repress Dpp/BMP signalling in a translation-independent manner in *Drosophila* (4,5).

Specificity/Sensitivity: eIF4A (F52) Antibody detects endogenous levels of total eIF4A1, eIF4A2 and eIF4A3 proteins.

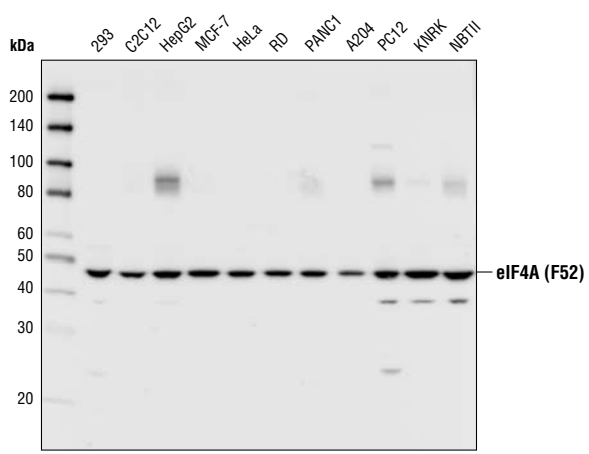
Source/Purification: Polyclonal antibodies are produced by immunizing rabbits with a synthetic peptide (KLH-coupled) derived from residues surrounding Phe52 of human eIF4A. Antibodies are purified by protein A and peptide affinity chromatography.

- Background References:**
- Rogers, G.W. et al. (2001) *J. Biol. Chem.* 276, 12598–12608.
 - Rogers, G.W. et al. (1999) *J. Biol. Chem.* 274, 12236–12244.
 - Svitkin, Y.V. et al. (2001) *RNA* 7, 382–394.
 - Li, J. and Li, W.X. (2006) *Nat. Cell Biol.* 8, 1407–1414.
 - Affolter, M. and Pyrowolakis, G. (2006) *Nat. Cell Biol.* 8, 1319–1321.

Storage: Supplied in 10 mM sodium HEPES (pH 7.5), 150 mM NaCl, 100 µg/ml BSA and 50% glycerol. Store at -20°C. Do not aliquot the antibody.

Recommended Antibody Dilutions:
 Western blotting 1:1000

- Companion Products:**
 eIF4A1 Antibody #2490
 eIF4B Antibody #3592
 eIF2B-ε Antibody #3595
 eIF4E Antibody #9742
 eIF4G Antibody #2498
 eIF5 Antibody #2480
 Nonphospho-4E-BP1 (Thr46) (87D12) Rabbit mAb #4923
 4E-BP1 Antibody #9452
 4E-BP1 (53H11) Rabbit mAb #9644
 4E-BP2 Antibody #2845
 4E-T Antibody #2297
 S6 Ribosomal Protein (5G10) Rabbit mAb #2217
 S6 Ribosomal Protein (54D2) Mouse mAb #2317
 Phototope[®]-HRP Western Blot Detection System, Anti-rabbit IgG, HRP-linked Antibody #7071
 Anti-rabbit IgG, HRP-linked Antibody #7074
 Prestained Protein Marker, Broad Range (Premixed Format) #7720
 Biotinylated Protein Ladder Detection Pack #7727
 20X LumiGLO[®] Reagent and 20X Peroxide #7003
 Tris Buffered Saline with Tween 20 (TBST - 10X) #9997
 BSA #9998
 Nonfat Dry Milk#9999



Western blot analysis of extracts from various cell types using eIF4A (F52) Antibody.

IMPORTANT: For Western blots, incubate membrane with diluted antibody in 5% w/v BSA, 1X TBS, 0.1% Tween-20 at 4°C with gentle shaking, overnight.

Applications Key: W—Western IP—Immunoprecipitation IHC—Immunohistochemistry IC—Immunocytochemistry IF—Immunofluorescence
Species Cross-Reactivity Key: H—human M—mouse R—rat Hm—hamster Mk—monkey Mi—mink C—chicken X—Xenopus
 F—Flow cytometry E—ELISA D—DELFI[®]
 Z—zebra fish B—bovine All—all species expected

Western Immunoblotting Protocol (Primary Ab Incubation In BSA)

For Western blots, incubate membrane with diluted antibody in 5% w/v BSA, 1X TBS, 0.1% Tween-20 at 4°C with gentle shaking, overnight.

A Solutions and Reagents

NOTE: Prepare solutions with Milli-Q or equivalently purified water.

- 1X Phosphate Buffered Saline (PBS)
- 1X SDS Sample Buffer:** 62.5 mM Tris-HCl (pH 6.8 at 25°C), 2% w/v SDS, 10% glycerol, 50 mM DTT, 0.01% w/v bromophenol blue or phenol red
- Transfer Buffer:** 25 mM Tris base, 0.2 M glycine, 20% methanol (pH 8.5)
- 10X Tris Buffered Saline (TBS):** To prepare 1 liter of 10X TBS: 24.2 g Tris base, 80 g NaCl; adjust pH to 7.6 with HCl (use at 1X).
- Nonfat Dry Milk (weight to volume [w/v])
- Blocking Buffer:** 1X TBS, 0.1% Tween-20 with 5% w/v nonfat dry milk; for 150 ml, add 15 ml 10X TBS to 135 ml water, mix. Add 7.5 g nonfat dry milk and mix well. While stirring, add 0.15 ml Tween-20 (100%).
- Wash Buffer:** 1X TBS, 0.1% Tween-20 (TBS/T)
- Bovine Serum Albumin (BSA)
- Primary Antibody Dilution Buffer:** 1X TBS, 0.1% Tween-20 with 5% BSA; for 20 ml, add 2 ml 10X TBS to 18 ml water, mix. Add 1.0 g BSA and mix well. While stirring, add 20 µl Tween-20 (100%).
- Phototope[®]-HRP Western Blot Detection System #7071:** Includes biotinylated protein ladder, secondary anti-rabbit (#7074) antibody conjugated to horseradish peroxidase (HRP), anti-biotin antibody conjugated to HRP, LumiGLO[®] chemiluminescent reagent and peroxide.
- Prestained Protein Marker, Broad Range (Premixed Format) #7720
- Biotinylated Protein Ladder Detection Pack #7727
- Blotting Membrane:** This protocol has been optimized for nitrocellulose membranes, which CST recommends. PVDF membranes may also be used.

B Protein Blotting

A general protocol for sample preparation is described below.

- Treat cells by adding fresh media containing regulator for desired time.
- Aspirate media from cultures; wash cells with 1X PBS; aspirate.
- Lyse cells by adding 1X SDS sample buffer (100 µl per well of 6-well plate or 500 µl per plate of 10 cm diameter plate). Immediately scrape the cells off the plate and transfer the extract to a microcentrifuge tube. Keep on ice.
- Sonicate for 10–15 seconds to shear DNA and reduce sample viscosity.
- Heat a 20 µl sample to 95–100°C for 5 minutes; cool on ice.
- Microcentrifuge for 5 minutes.
- Load 20 µl onto SDS-PAGE gel (10 cm x 10 cm).

NOTE: CST recommends loading prestained molecular weight markers (#7720, 10 µl/lane) to verify electrotransfer and biotinylated protein ladder (#7727, 10 µl/lane) to determine molecular weights.

- Electrotransfer to nitrocellulose or PVDF membrane.

C Membrane Blocking and Antibody Incubations

NOTE: Volumes are for 10 cm x 10 cm (100 cm²) of membrane; for different sized membranes, adjust volumes accordingly.

- (Optional) After transfer, wash nitrocellulose membrane with 25 ml TBS for 5 minutes at room temperature.
- Incubate membrane in 25 ml of blocking buffer for 1 hour at room temperature.
- Wash three times for 5 minutes each with 15 ml of TBS/T.
- Incubate membrane and primary antibody (at the appropriate dilution) in 10 ml primary antibody dilution buffer with gentle agitation overnight at 4°C.
- Wash three times for 5 minutes each with 15 ml of TBS/T.
- Incubate membrane with HRP-conjugated secondary antibody (1:2000) and HRP-conjugated anti-biotin antibody (1:1000) to detect biotinylated protein markers in 10 ml of blocking buffer with gentle agitation for 1 hour at room temperature.
- Wash three times for 5 minutes each with 15 ml of TBS/T.

D Detection of Proteins

- Incubate membrane with 10 ml LumiGLO[®] (0.5 ml 20X LumiGLO[®], 0.5 ml 20X Peroxide and 9.0 ml Milli-Q water) with gentle agitation for 1 minute at room temperature.

NOTE: LumiGLO[®] substrate can be further diluted if signal response is too fast.

- Drain membrane of excess developing solution (do not let dry), wrap in plastic wrap and expose to x-ray film. An initial 10-second exposure should indicate the proper exposure time.

NOTE: Due to the kinetics of the detection reaction, signal is most intense immediately following LumiGLO[®] incubation and declines over the following 2 hours.