

#2447 Store at -20°C

AS160 Antibody

✓ 100 µl (10 Western mini-blot)

Orders ■ 877-616-CELL (2355) orders@cellsignal.com
Support ■ 877-678-TECH (8324) info@cellsignal.com
Web ■ www.cellsignal.com

rev. 08/26/08

This product is for *in vitro* research use only and is not intended for use in humans or animals. This product is not intended for use as a therapeutic or in diagnostic procedures.

Applications W, IP Endogenous	Species Cross-Reactivity* H	Molecular Wt. 160 kDa	Source Rabbit**
-------------------------------------	--------------------------------	--------------------------	--------------------

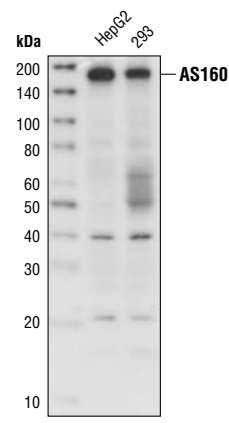
Background: The polypeptide insulin is a major hormone controlling critical energy functions such as glucose and lipid metabolism. Insulin binds and activates the insulin receptor (IR) tyrosine kinase, which phosphorylates and recruits different adaptor proteins. The signaling pathway initiated by insulin and its receptor stimulates glucose uptake in muscle cells and adipocytes through translocation of GLUT4 glucose transporters from the cytoplasm to the plasma membrane (1). A 160 kDa substrate of the Akt serine/threonine kinase (AS160, TBC1D4) is a Rab GTPase activating protein that regulates insulin-stimulated GLUT4 trafficking. AS160 was found to be expressed in many tissues including brain, kidney, liver and brown and white fat (2). Multiple Akt phosphorylation sites were identified on AS160 *in vivo*, with five sites showing increased phosphorylation following insulin treatment (2,3). Studies using recombinant AS160 demonstrated that insulin-stimulated phosphorylation of AS160 is a crucial step in GLUT4 translocation (3) and is reduced in some patients with type 2 diabetes (4). The interaction of 14-3-3 regulatory proteins with AS160 phosphorylated at Thr642 is another necessary step for GLUT4 translocation (5). Phosphorylation of AS160 by AMPK is involved in the regulation of contraction-stimulated GLUT4 translocation (6).

Specificity/Sensitivity: AS160 Antibody detects endogenous levels of total AS160 protein.

Source/Purification: Polyclonal antibodies are produced by immunizing rabbits with a synthetic peptide (KLH-coupled) derived from the sequence around Cys1286 of human AS160. Antibodies are purified by protein A and peptide affinity chromatography.

Background References:

(1) Watson, R.T. and Pessin, J.E. (2006) *Trends Biochem. Sci.* 31, 215–222.
(2) Kane, S. et al. (2002) *J. Biol. Chem.* 277, 22115–22118.
(3) Sano, H. et al. (2003) *J. Biol. Chem.* 278, 14599–14602.
(4) Karlsson, H.K. et al. (2005) *Diabetes* 54, 1692–1697.
(5) Ramm, G. et al. (2006) *J. Biol. Chem.* 281, 29174–29180.
(6) Kramer, H.F. et al. (2006) *J. Biol. Chem.* 281, 31478–31485.



Western blot analysis of extracts from HepG2 and 293 cells using AS160 Antibody.

Entrez-Gene ID #9882
Swiss-Prot Acc. #060343

Storage: Supplied in 10 mM sodium HEPES (pH 7.5), 150 mM NaCl, 100 µg/ml BSA and 50% glycerol. Store at -20°C. Do not aliquot the antibody.

*Species cross-reactivity is determined by Western blot.
**Anti-rabbit secondary antibodies must be used to detect this antibody.

Recommended Antibody Dilutions:

Western blotting	1:1000
Immunoprecipitation	1:50

Companion Products:

- Glut4 Antibody #2299
- Synip Antibody #3185
- Phototope®-HRP Western Blot Detection System, Anti-rabbit IgG, HRP-linked Antibody #7071
- Anti-rabbit IgG, HRP-linked Antibody #7074
- Prestained Protein Marker, Broad Range (Premixed Format) #7720
- Biotinylated Protein Ladder Detection Pack #7727
- 20X LumiGLO® Reagent and 20X Peroxide #7003

IMPORTANT: For Western blots, incubate membrane with diluted antibody in 5% w/v BSA, 1X TBS, 0.1% Tween-20 at 4°C with gentle shaking, overnight.

Applications Key: W—Western IP—Immunoprecipitation IHC—Immunohistochemistry ChIP—Chromatin Immunoprecipitation IF—Immunofluorescence F—Flow cytometry E-P—ELISA-Peptide
Species Cross-Reactivity Key: H—human M—mouse R—rat Hm—hamster Mk—monkey Mi—mink C—chicken Dm—D. melanogaster X—Xenopus Z—zebra fish B—bovine
Dg—dog Pg—pig Sc—S. cerevisiae All—all species expected Species enclosed in parentheses are predicted to react based on 100% homology.

Western Immunoblotting Protocol (Primary Ab Incubation In BSA)

For Western blots, incubate membrane with diluted antibody in 5% w/v BSA, 1X TBS, 0.1% Tween-20 at 4°C with gentle shaking, overnight.

A Solutions and Reagents

NOTE: Prepare solutions with Milli-Q or equivalently purified water.

- 1X Phosphate Buffered Saline (PBS)
- 1X SDS Sample Buffer:** 62.5 mM Tris-HCl (pH 6.8 at 25°C), 2% w/v SDS, 10% glycerol, 50 mM DTT, 0.01% w/v bromophenol blue or phenol red
- Transfer Buffer:** 25 mM Tris base, 0.2 M glycine, 20% methanol (pH 8.5)
- 10X Tris Buffered Saline (TBS):** To prepare 1 liter of 10X TBS: 24.2 g Tris base, 80 g NaCl; adjust pH to 7.6 with HCl (use at 1X).
- Nonfat Dry Milk (weight to volume [w/v])
- Blocking Buffer:** 1X TBS, 0.1% Tween-20 with 5% w/v nonfat dry milk; for 150 ml, add 15 ml 10X TBS to 135 ml water, mix. Add 7.5 g nonfat dry milk and mix well. While stirring, add 0.15 ml Tween-20 (100%).
- Wash Buffer:** 1X TBS, 0.1% Tween-20 (TBS/T)
- Bovine Serum Albumin (BSA)
- Primary Antibody Dilution Buffer:** 1X TBS, 0.1% Tween-20 with 5% BSA; for 20 ml, add 2 ml 10X TBS to 18 ml water, mix. Add 1.0 g BSA and mix well. While stirring, add 20 µl Tween-20 (100%).
- Phototope[®]-HRP Western Blot Detection System #7071:** Includes biotinylated protein ladder, secondary anti-rabbit (#7074) antibody conjugated to horseradish peroxidase (HRP), anti-biotin antibody conjugated to HRP, LumiGLO[®] chemiluminescent reagent and peroxide.
- Prestained Protein Marker, Broad Range (Premixed Format) #7720
- Biotinylated Protein Ladder Detection Pack #7727
- Blotting Membrane:** This protocol has been optimized for nitrocellulose membranes, which CST recommends. PVDF membranes may also be used.

B Protein Blotting

A general protocol for sample preparation is described below.

- Treat cells by adding fresh media containing regulator for desired time.
- Aspirate media from cultures; wash cells with 1X PBS; aspirate.
- Lyse cells by adding 1X SDS sample buffer (100 µl per well of 6-well plate or 500 µl per plate of 10 cm diameter plate). Immediately scrape the cells off the plate and transfer the extract to a microcentrifuge tube. Keep on ice.
- Sonicate for 10–15 seconds to shear DNA and reduce sample viscosity.
- Heat a 20 µl sample to 95–100°C for 5 minutes; cool on ice.
- Microcentrifuge for 5 minutes.
- Load 20 µl onto SDS-PAGE gel (10 cm x 10 cm).

NOTE: CST recommends loading prestained molecular weight markers (#7720, 10 µl/lane) to verify electrotransfer and biotinylated protein ladder (#7727, 10 µl/lane) to determine molecular weights.

- Electrotransfer to nitrocellulose or PVDF membrane.

C Membrane Blocking and Antibody Incubations

NOTE: Volumes are for 10 cm x 10 cm (100 cm²) of membrane; for different sized membranes, adjust volumes accordingly.

- (Optional) After transfer, wash nitrocellulose membrane with 25 ml TBS for 5 minutes at room temperature.
- Incubate membrane in 25 ml of blocking buffer for 1 hour at room temperature.
- Wash three times for 5 minutes each with 15 ml of TBS/T.
- Incubate membrane and primary antibody (at the appropriate dilution) in 10 ml primary antibody dilution buffer with gentle agitation overnight at 4°C.
- Wash three times for 5 minutes each with 15 ml of TBS/T.
- Incubate membrane with HRP-conjugated secondary antibody (1:2000) and HRP-conjugated anti-biotin antibody (1:1000) to detect biotinylated protein markers in 10 ml of blocking buffer with gentle agitation for 1 hour at room temperature.
- Wash three times for 5 minutes each with 15 ml of TBS/T.

D Detection of Proteins

- Incubate membrane with 10 ml LumiGLO[®] (0.5 ml 20X LumiGLO[®], 0.5 ml 20X Peroxide and 9.0 ml Milli-Q water) with gentle agitation for 1 minute at room temperature.

NOTE: LumiGLO[®] substrate can be further diluted if signal response is too fast.

- Drain membrane of excess developing solution (do not let dry), wrap in plastic wrap and expose to x-ray film. An initial 10-second exposure should indicate the proper exposure time.

NOTE: Due to the kinetics of the detection reaction, signal is most intense immediately following LumiGLO[®] incubation and declines over the following 2 hours.

Immunoprecipitation Protocol / (For Analysis By Western Immunoblotting)

A Solutions and Reagents

NOTE: Prepare solutions with Milli-Q or equivalently purified water.

1. 1X Phosphate Buffered Saline (PBS)
2. **1X Cell Lysis Buffer:** 20 mM Tris (pH 7.5), 150 mM NaCl, 1 mM EDTA, 1 mM EGTA, 1% Triton X-100, 2.5 mM Sodium pyrophosphate, 1 mM β -glycerophosphate, 1 mM Na_3VO_4 , 1 $\mu\text{g/ml}$ Leupeptin

NOTE: Add 1 mM PMSF immediately prior to use.

1. **Transfer Buffer:** 25 mM Tris base, 0.2 M glycine, 20% methanol (pH 8.5)
2. **Protein A or G Agarose Beads:** (Can be stored for 2 weeks at 4°C.) Please prepare according to manufacturer's instructions. Use Protein A for rabbit IgG pull down and Protein G for mouse IgG pull down.
3. **3X SDS Sample Buffer:** 187.5 mM Tris-HCl (pH 6.8 at 25°C), 6% w/v SDS, 30% glycerol, 150 mM DTT, 0.03% w/v bromophenol blue

B Preparing Cell Lysates

1. Aspirate media. Treat cells by adding fresh media containing regulator for desired time.
2. To harvest cells under nondenaturing conditions, remove media and rinse cells once with ice-cold PBS.
3. Remove PBS and add 0.5 ml ice-cold 1X cell lysis buffer to each plate (10 cm) and incubate the plates on ice for 5 minutes.
4. Scrape cells off the plates and transfer to microcentrifuge tubes. Keep on ice.
5. Sonicate samples on ice three times for 5 seconds each.
6. Microcentrifuge for 10 minutes at 14,000 X g, 4°C, and transfer the supernatant to a new tube. If necessary, lysate can be stored at -80°C.

C Immunoprecipitation

Optional: It may be necessary to perform a lysate pre-clearing step to reduce non-specific binding to the Protein A/G agarose beads (See section below).

1. Take 200 μl cell lysate and add primary antibody. Incubate with gentle rocking overnight at 4°C.
2. Add either protein A or G agarose beads (20 μl of 50% bead slurry). Incubate with gentle rocking for 1–3 hours at 4°C.
3. Microcentrifuge for 30 seconds at 4°C. Wash pellet five times with 500 μl of 1X cell lysis buffer. Keep on ice during washes.
4. Resuspend the pellet with 20 μl 3X SDS sample buffer. Vortex, then microcentrifuge for 30 seconds.
5. Heat the sample to 95–100°C for 2–5 minutes and microcentrifuge for 1 minute at 14,000 X g.
6. Load the sample (15–30 μl) on SDS-PAGE gel (12–15%).
7. Analyze sample by Western blotting (see Western Immunoblotting Protocol).

Cell Lysate Pre-Clearing (Optional)

1. Take 200 μl cell lysate and add to either Protein A or G agarose beads (20 μl of 50% bead slurry).
2. Incubate at 4°C for 30 – 60 minutes.
3. Spin for 10 minutes at 4°C. Transfer the supernatant to a fresh tube.
4. Proceed to step 1 of Immunoprecipitation.