

Cdc42 Antibody

✓ 100 µl
(10 western blots)

Orders ■ 877-616-CELL (2355)
orders@cellsignal.com

Support ■ 877-678-TECH (8324)
info@cellsignal.com

Web ■ www.cellsignal.com

rev. 1/19/10

This product is intended for research purposes only. This product is not intended to be used for therapeutic or diagnostic purposes in humans or animals.

Applications	Species Cross-Reactivity*	Molecular Wt.	Source
W Endogenous	H, M, R, Mk, B, (C, Dg, X, Z)	21 kDa	Rabbit**

Background: Rac and Cdc42 are members of the Rho-GTPase family. In mammals, Rac exists as three isoforms, Rac1, Rac2 and Rac3, which are highly similar in sequence. Rac1 and Cdc42, the most widely studied of this group, are ubiquitously expressed. Rac2 is expressed in cells of hematopoietic origin, and Rac3, while highly expressed in brain, has been found in many tissues. Rac and Cdc42 play key signaling roles in cytoskeletal reorganization, membrane trafficking, transcriptional regulation, cell growth and development (1). GTP binding stimulates the activity of Rac/Cdc42, and the hydrolysis of GTP to GDP through the protein's intrinsic GTPase activity, rendering it inactive. GTP hydrolysis is aided by GTPase activating proteins (GAPs), while exchange of GDP for GTP is facilitated by guanine nucleotide exchange factors (GEFs). Another level of regulation is achieved through the binding of RhoGDI, a guanine nucleotide dissociation inhibitor, which retains Rho family GTPases, including Rac and Cdc42, in their inactive GDP-bound state (2,3).

Specificity/Sensitivity: Cdc42 Antibody detects endogenous levels of total Cdc42 protein. The antibody does not cross-react with other small GTPases.

Source/Purification: Polyclonal antibodies are produced by immunizing animals with a synthetic peptide (KLH-coupled) corresponding to residues surrounding Lys135 of human Cdc42. Antibodies are purified by protein A and peptide affinity chromatography.

Background References:

- (1) Wennerberg, K. and Der, C.J. (2004) *J. Cell Sci.* 117, 1301–1312.
- (2) Bernards, A. and Settleman, J. (2004) *Trends Cell Biol.* 14, 377–385.
- (3) Rossman, K.L. et al. (2005) *Nat. Rev. Mol. Cell Biol.* 6, 167–180.

Entrez-Gene ID #998

Swiss-Prot Acc. #P60953

Storage: Supplied in 10 mM sodium HEPES (pH 7.5), 150 mM NaCl, 100 µg/ml BSA and 50% glycerol. Store at -20°C.

Do not aliquot the antibody.

*Species cross-reactivity is determined by Western blot.

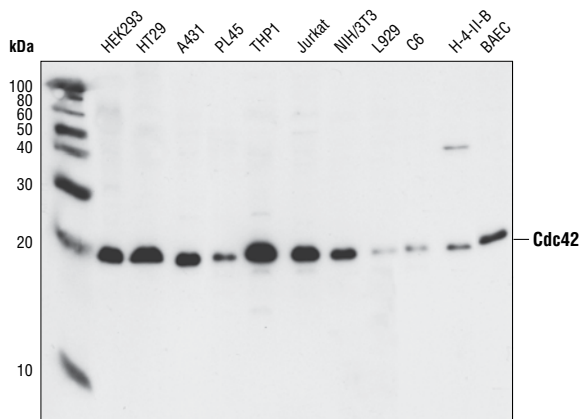
**Anti-rabbit secondary antibodies must be used to detect this antibody.

Recommended Antibody Dilutions:

Western blotting 1:1000

For application specific protocols please see the web page for this product at www.cellsignal.com.

Please visit www.cellsignal.com for a complete listing of recommended companion products.



Western blot analysis of HEK293, HT29, A431, PL45, THP1, Jurkat, NIH/3T3, L929, C6, H-4-II-B and BAEC cells, using Cdc42 Antibody.

IMPORTANT: For Western blots, incubate membrane with diluted antibody in 5% w/v BSA, 1X TBS, 0.1% Tween-20 at 4°C with gentle shaking, overnight.

Applications Key: W—Western IP—Immunoprecipitation IHC—Immunohistochemistry ChIP—Chromatin Immunoprecipitation IF—Immunofluorescence F—Flow cytometry E-P—ELISA-Peptide
Species Cross-Reactivity Key: H—human M—mouse R—rat Hm—hamster Mk—monkey Mi—mink C—chicken Dm—D. melanogaster X—Xenopus Z—zebrafish B—bovine
 Dg—dog Pg—pig Sc—S. cerevisiae Ce—C. elegans Hr—horse All—all species expected Species enclosed in parentheses are predicted to react based on 100% homology.