

#2509 Store at -20°C

# AP-2β Antibody

✓ 100 μl  
(10 western blots)

**Orders** ■ 877-616-CELL (2355)  
orders@cellsignaling.com  
**Support** ■ 877-678-TECH (8324)  
info@cellsignaling.com  
**Web** ■ www.cellsignaling.com

rev. 02/04/10

This product is intended for research purposes only. This product is not intended to be used for therapeutic or diagnostic purposes in humans or animals.

Entrez-Gene ID #7021  
Swiss-Prot Acc. #Q92481

Applications	Species Cross-Reactivity*	Molecular Wt.	Source
W, IP, IF-IC Endogenous	H, M, R	49 kDa	Rabbit**

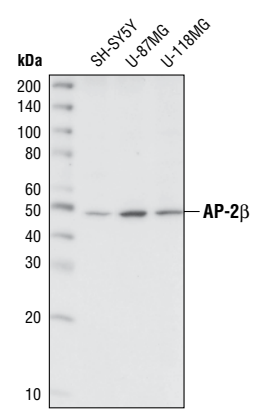
**Background:** The sequence-specific transcription factor activator protein 2β (AP-2β) is required for normal kidney development (1). AP-2β knockout mice die 1-2 days after birth due to polycystic kidney disease (1). Massive apoptosis occurred during kidney development at the end of embryogenesis in these mice (1). Overexpressed AP-2β has been found to suppress c-myc-induced apoptosis, indicating a role of this transcription factor in cell survival (1). In addition, overexpression of AP-2β is shown to be related to impaired insulin signaling in adipocytes, and is therefore proposed to be a candidate gene that may relate to obesity (2).

**Specificity/Sensitivity:** AP-2β Antibody detects endogenous levels of total AP-2β protein.

**Source/Purification:** Polyclonal antibodies are produced by immunizing animals with a synthetic peptide derived from the sequence of human AP-2β. Antibodies are purified by protein A and peptide affinity chromatography.

**Background References:**

- (1) Moser, M. et al. (1997) *Genes Dev.* 11, 1938–1148.
- (2) Tao, Y. et al. (2006) *Endocrinology* 147, 1685–1696.



Western blot analysis of extracts from various cell lines, using AP-2β Antibody.

**Storage:** Supplied in 10 mM sodium HEPES (pH 7.5), 150 mM NaCl, 100 μg/ml BSA and 50% glycerol. Store at -20°C. Do not aliquot the antibody.

\*Species cross-reactivity is determined by western blot.

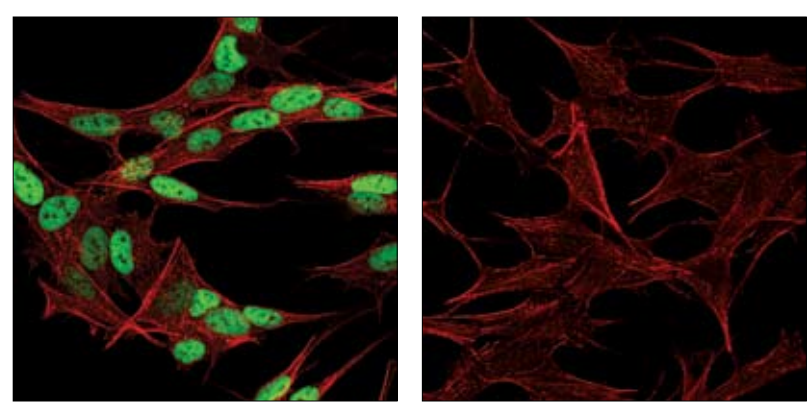
\*\*Anti-rabbit secondary antibodies must be used to detect this antibody.

**Recommended Antibody Dilutions:**

Western blotting	1:1000
Immunoprecipitation	1:100
Immunofluorescence (IF-IC)	1:100

For application specific protocols please see the web page for this product at [www.cellsignaling.com](http://www.cellsignaling.com).

Please visit [www.cellsignaling.com](http://www.cellsignaling.com) for a complete listing of recommended companion products.



Confocal immunofluorescent analysis of SH-SY5Y cells labeled with AP-2β Antibody (green, left) compared to a nonspecific negative control antibody (right). Actin filaments have been labeled with Alexa Fluor® 555 phalloidin (red).

**IMPORTANT:** For western blots, incubate membrane with diluted antibody in 5% w/v BSA, 1X TBS, 0.1% Tween-20 at 4°C with gentle shaking, overnight.

Alexa Fluor® is a registered trademark of Molecular Probes, Inc.

**Applications Key:** W—Western IP—Immunoprecipitation IHC—Immunohistochemistry ChIP—Chromatin Immunoprecipitation IF—Immunofluorescence F—Flow cytometry E-P—ELISA-Peptide  
**Species Cross-Reactivity Key:** H—human M—mouse R—rat Hm—hamster Mk—monkey Mi—mink C—chicken Dm—D. melanogaster X—Xenopus Z—zebrafish B—bovine  
Dg—dog Pg—pig Sc—S. cerevisiae Ce—C. elegans Hr—Horse All—all species expected Species enclosed in parentheses are predicted to react based on 100% homology.