

Phospho-PAK2 (Ser20) Antibody

100 µl
 (10 western blots)

Orders ■ 877-616-CELL (2355)
 orders@cellsignal.com
Support ■ 877-678-TECH (8324)
 info@cellsignal.com
Web ■ www.cellsignal.com

rev. 1/20/10

This product is intended for research purposes only. This product is not intended to be used for therapeutic or diagnostic purposes in humans or animals.

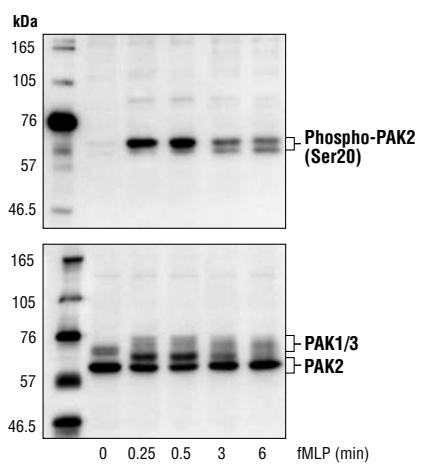
Applications	Species Cross-Reactivity*	Molecular Wt.	Source
W Endogenous	H, M, (R)	61 to 67 kDa	Rabbit**

Background: The p21-activated kinase (PAK) family of serine/threonine kinases is engaged in multiple cellular processes, including cytoskeletal reorganization, MAPK signaling, apoptotic signaling, control of phagocyte NADPH oxidase and growth factor-induced neurite outgrowth (1,2). Several mechanisms that induce PAK activity have been reported. Binding of Rac/cdc42 to the CRIB (or PBD) domain near the amino-terminus of PAK causes autophosphorylation and conformational changes in PAK (1). Phosphorylation of PAK1 at Thr423 by PDK induces activation of PAK1 (3). Several autophosphorylation sites have been identified, including serines 199 and 204 of PAK1 and serines 192 and 197 of PAK2 (4,5). Because the autophosphorylation sites are located in the amino-terminal inhibitory domain, it has been hypothesized that modification in this region prevents the kinase from reverting to an inactive conformation (6). Research indicates that phosphorylation of Ser144 of PAK1 or Ser139 of PAK3 (located in the kinase inhibitory domain) affects kinase activity (7). Phosphorylation of Ser21 of PAK1 or Ser20 of PAK2 regulates binding with the adaptor protein Nck (8). More recently identified family members including PAK4, PAK5 and PAK6 have lower sequence similarity with PAK1-3 in the amino-terminal regulatory region (9). Phosphorylation of Ser474 of PAK4, a site analogous to Thr423 of PAK1, may play a pivotal role in regulating the activity and function of PAK4 (10).

Specificity/Sensitivity: Phospho-PAK2 (Ser20) Antibody detects endogenous levels of PAK2 only when phosphorylated at serine 20. This antibody does not cross-react with other phosphorylated PAK family members.

Source/Purification: Polyclonal antibodies are produced by immunizing animals with a synthetic phospho-peptide (KLH-coupled) corresponding to residues surrounding Ser20 of human PAK2. Antibodies are purified by protein A and peptide affinity chromatography.

Selected Application References:
 Zhan, Q. et al. (2003) p21-Activated Kinase 2 in Neutrophils Can Be Regulated by Phosphorylation at Multiple Sites and by a Variety of Protein Phosphatases p21-Activated Kinase 2 in Neutrophils Can Be Regulated by Phosphorylation at Multiple Sites and by a Variety of Protein Phosphatases. *The Journal of Immunology* 171, 3785–3793. Application: W.



Western blot analysis of extracts from guinea pig neutrophils stimulated with fMLP for the indicated times, using Phospho-PAK2 (Ser20) Antibody (upper) or PAK1/2/3 Antibody #2604 (lower).

Background References:

- (1) Knaus, U.G. and Bokoch, G.M. (1998) *Int. J. Biochem. Cell Biol.* 30, 857–862.
- (2) Daniels, R.H. et al. (1998) *EMBO J.* 17, 754–764.
- (3) King, C.C. et al. (2000) *J. Biol. Chem.* 275, 41201–41209.
- (4) Manser, E. et al. (1997) *Mol. Cell. Biol.* 17, 1129–1143.
- (5) Gatti, A. et al. (1999) *J. Biol. Chem.* 274, 8022–8028.
- (6) Lei, M. et al. (2000) *Cell* 102, 387–397.
- (7) Chong, C. et al. (2001) *J. Biol. Chem.* 276, 17347–17353.
- (8) Zhao, Z. et al. (2000) *Mol. Cell. Biol.* 20, 3906–3917.
- (9) Abo, A. et al. (1998) *EMBO J.* 17, 6527–6540.
- (10) Qu, J. et al. (2001) *Mol. Cell. Biol.* 21, 3523–3533.

Entrez-Gene ID #5062
Swiss-Prot Acc. #Q13177

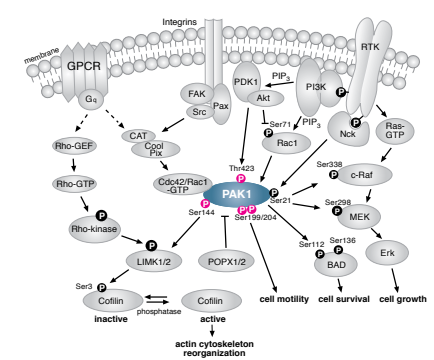
Storage: Supplied in 10 mM sodium HEPES (pH 7.5), 150 mM NaCl, 100 µg/ml BSA and 50% glycerol. Store at -20°C.
Do not aliquot the antibody.

*Species cross-reactivity is determined by Western blot.
**Anti-rabbit secondary antibodies must be used to detect this antibody.

Recommended Antibody Dilutions:
 Western Blotting 1:1000

For application specific protocols please see the web page for this product at www.cellsignal.com.

Please visit www.cellsignal.com for a complete listing of recommended companion products.



IMPORTANT: For Western blots, incubate membrane with diluted antibody in 5% w/v BSA, 1X TBS, 0.1% Tween-20 at 4°C with gentle shaking, overnight.