

#2647 Store at -20°C

# α-Synuclein (Syn204) Mouse mAb

✓ 100 µl  
(10 western blots)



**Orders** ■ 877-616-CELL (2355)  
orders@cellsignaling.com  
**Support** ■ 877-678-TECH (8324)  
info@cellsignaling.com  
**Web** ■ www.cellsignaling.com

rev. 06/10/10

This product is intended for research purposes only. This product is not intended to be used for therapeutic or diagnostic purposes in humans or animals.

Entrez-Gene ID #6622  
Swiss-Prot Acc. #P37840

| Applications                 | Species Cross-Reactivity* | Molecular Wt. | Isotype       |
|------------------------------|---------------------------|---------------|---------------|
| W, IHC-P, IF-P<br>Endogenous | H                         | 18 kDa        | Mouse IgG2a** |

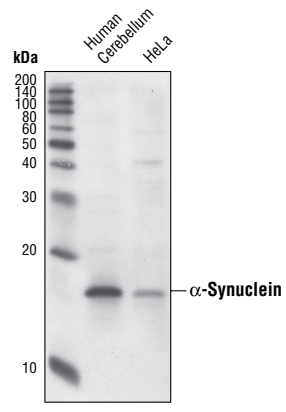
**Background:** α-synuclein is a protein of 140-amino acids expressed abundantly in the brain. α-synuclein is also the main component of pathogenic Lewy bodies and Lewy neurites. Mutations of the α-synuclein gene have been linked to Parkinson's disease (1).

**Specificity/Sensitivity:** α-Synuclein (Syn204) Mouse mAb detects endogenous levels of total α-synuclein protein. α-Synuclein (Syn204) Mouse mAb detects recombinant α but not β synuclein (Giasson, B.I. et al., 2000).

**Source/Purification:** Monoclonal antibody is produced by immunizing animals with human recombinant α-synuclein and the epitope maps to the amino-terminus of the protein.

**Background References:**

(1) Goldberg, M.S. and Lansbury Jr., P.T. (2000) *Nat. Cell Biol.* 2, 115–119.



Western blot analysis of extracts from human cerebellum and HeLa cells, using α-Synuclein (Syn204) Mouse mAb.

**Storage:** Supplied in 10 mM sodium HEPES (pH 7.5), 150 mM NaCl, 100 µg/ml BSA and 50% glycerol. Store at -20°C. Do not aliquot the antibody.

\*Species cross-reactivity is determined by western blot.

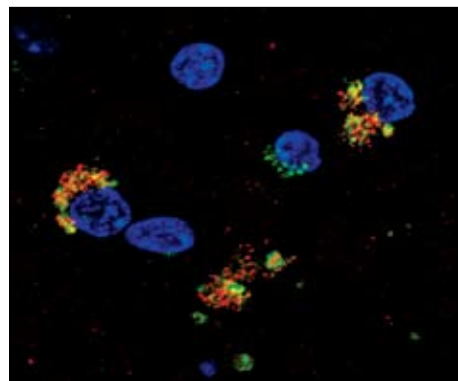
\*\*Anti-mouse secondary antibodies must be used to detect this antibody.

**Recommended Antibody Dilutions:**

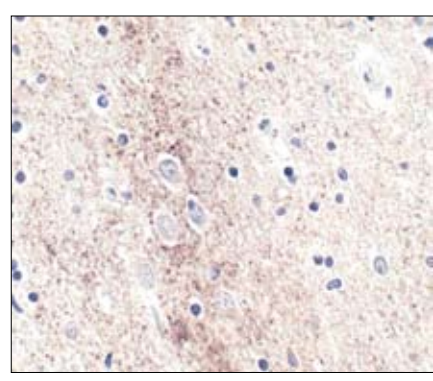
|                                 |             |
|---------------------------------|-------------|
| Western blotting                | 1:1000      |
| Immunohistochemistry (Paraffin) | 1:25        |
| Unmasking buffer:               | Citrate     |
| Antibody diluent:               | PBST-5% NGS |
| Immunofluorescence (IF-P)       | 1:100       |

For application specific protocols please see the web page for this product at [www.cellsignaling.com](http://www.cellsignaling.com).

Please visit [www.cellsignaling.com](http://www.cellsignaling.com) for a complete listing of recommended companion products.



Confocal immunofluorescent image of human Alzheimer's brain labeled with α-Synuclein (Syn204) Mouse mAb (red) and β- Amyloid Antibody #2454 (green). Blue pseudocolor = DRAQ5® #4084 (fluorescent DNA dye).



Immunohistochemical analysis of paraffin-embedded human brain, using α-Synuclein (Syn204) Mouse mAb.

**IMPORTANT: For western blots, incubate membrane with diluted antibody in 5% w/v nonfat dry milk, 1X TBS, 0.1% Tween-20 at 4°C with gentle shaking, overnight.**

DRAQ5® is a registered trademark of Biostatus Limited.

**Applications Key:** W—Western IP—Immunoprecipitation IHC—Immunohistochemistry ChIP—Chromatin Immunoprecipitation IF—Immunofluorescence F—Flow cytometry E-P—ELISA-Peptide

**Species Cross-Reactivity Key:** H—human M—mouse R—rat Hm—hamster Mk—monkey Mi—mink C—chicken Dm—D. melanogaster X—Xenopus Z—zebrafish B—bovine

Dg—dog Pg—pig Sc—S. cerevisiae Ce—C. elegans Hr—Horse All—all species expected Species enclosed in parentheses are predicted to react based on 100% homology.