

#2737 Store at -20°C

# ATRIP Antibody

✓ 100 µl  
(10 western blots)

Orders ■ 877-616-CELL (2355)  
orders@cellsignaling.com  
Support ■ 877-678-TECH (8324)  
info@cellsignaling.com  
Web ■ www.cellsignaling.com

rev. 03/31/10

This product is intended for research purposes only. This product is not intended to be used for therapeutic or diagnostic purposes in humans or animals.

Entrez-Gene ID #84126  
Swiss-Prot Acc. #Q8WXE1

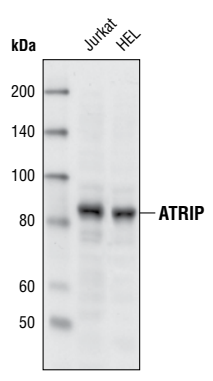
Applications	Species Cross-Reactivity*	Molecular Wt.	Source
W, IP, IF-IC Endogenous	H	82 kDa	Rabbit**

**Background:** In response to genomic stress, the ATR interacting protein (ATRIP) binds and is phosphorylated by the DNA damage-and checkpoint-activated kinase ATR (ataxia-telangiectasia mutated and rad3-related). Both ATR and ATRIP are integral for checkpoint signaling and are critical in the DNA repair response (1-3). Direct interaction between ATRIP and replication protein A (RPA) at RPA-coated, single-stranded DNA results in the recruitment of phosphorylated ATR/ATRIP to stalled replication forks and sites of DNA damage (3). ATR/ATRIP coordinate DNA repair and cell cycle progression in conjunction with key regulatory proteins, such as Rad17 and the 9-1-1 complex (4). ATR associated with ATRIP can also be stimulated by topoisomerase II binding protein (TOPBP1), suggesting that ATRIP may regulate both ATR localization and activity (5).

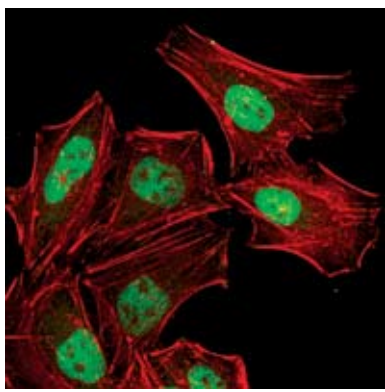
**Specificity/Sensitivity:** ATRIP Antibody detects endogenous levels of total ATRIP protein.

**Source/Purification:** Polyclonal antibodies are produced by immunizing animals with a synthetic peptide corresponding to amino acids surrounding Gly267 of human ATRIP. Antibodies are purified by protein A and peptide affinity chromatography.

- Background References:**
- (1) Cortez, D. et al. (2001) *Science* 294, 1713-1716.
  - (2) Itakura, E. et al. (2004) *Biochem. Biophys. Res. Commun.* 323, 1197-1202.
  - (3) Zou, L. and Elledge, S.J. (2003) *Science* 300, 1542-1548.
  - (4) Yang, X.H. and Zou, L. (2006) *Methods Enzymol.* 409, 118-131.
  - (5) Ball, H.L. et al. (2007) *Mol. Cell. Biol.* 27, 3367-3377.



Western blot analysis of extracts from Jurkat and HEL cells using ATRIP Antibody.



Confocal immunofluorescent analysis of HeLa cells using ATRIP Antibody (green). Actin filaments have been labeled with Alexa Fluor® 555 phalloidin (red).

**Storage:** Supplied in 10 mM HEPES (pH 7.5), 150 mM NaCl, 100 µg/ml BSA and 50% glycerol. Store at -20°C. Do not aliquot the antibody.

\*Species cross-reactivity is determined by western blot.

\*\*Anti-rabbit secondary antibodies must be used to detect this antibody.

**Recommended Antibody Dilutions:**

Western blotting	1:1000
Immunoprecipitation	1:100
Immunofluorescence (IF-IC)	1:100

For application specific protocols please see the web page for this product at [www.cellsignaling.com](http://www.cellsignaling.com).

Please visit [www.cellsignaling.com](http://www.cellsignaling.com) for a complete listing of recommended companion products.

**IMPORTANT: For western blots, incubate membrane with diluted antibody in 5% w/v BSA, 1X TBS, 0.1% Tween-20 at 4°C with gentle shaking, overnight.**

Alexa Fluor® is a registered trademark of Molecular Probes, Inc.