

**#2760** Store at **-20°C**

# Glucagon Antibody

100 µl  
 (100 sections)

**Orders** ■ 877-616-CELL (2355)  
 orders@cellsignal.com  
**Support** ■ 877-678-TECH (8324)  
 info@cellsignal.com  
**Web** ■ www.cellsignal.com

rev. 04/22/10

**This product is intended for research purposes only. This product is not intended to be used for therapeutic or diagnostic purposes in humans or animals.**

Applications	Species Cross-Reactivity	Molecular Wt.	Source
IHC-P, IHC-F, IF-F	H, M, R	4 kDa	Rabbit**

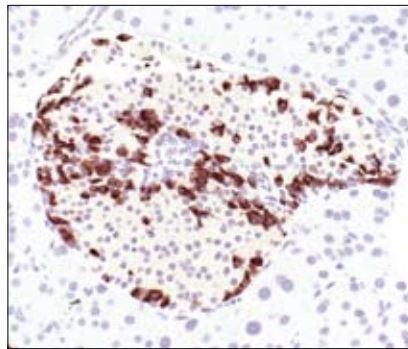
**Background:** Glucose homeostasis is regulated by a variety of hormones including glucagon. Glucagon is synthesized as the precursor molecule proglucagon and is proteolytically processed to yield the mature peptide in  $\alpha$  cells of the pancreatic islets. Glucagon causes the release of glucose from glycogen and stimulates gluconeogenesis in the liver (1,2).

**Specificity/Sensitivity:** Glucagon Antibody detects endogenous levels of total glucagon protein.

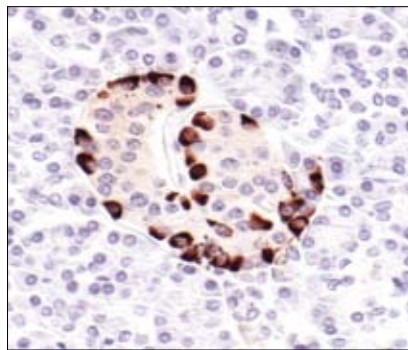
**Source/Purification:** Polyclonal antibodies are produced by immunizing animals with a synthetic peptide corresponding to the sequence of human glucagon. Antibodies are purified by protein A and peptide affinity chromatography.

**Background References:**

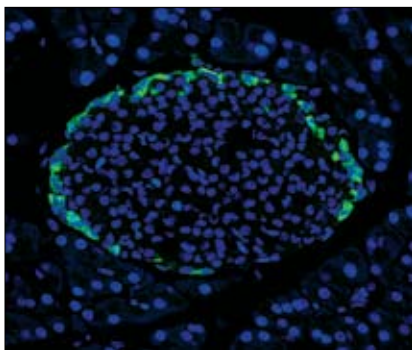
- (1) Hers, H.G. and Hue, L. (1983) *Annu. Rev. Biochem.* 52, 617–653.
- (2) Granner, D. and Pilkis, S. (1990) *J. Biol. Chem.* 265, 10173–10176.



*Immunohistochemical analysis of paraffin-embedded mouse pancreas, showing staining of  $\alpha$  cells, using Glucagon Antibody.*

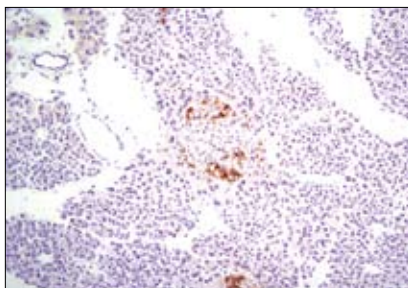


*Immunohistochemical analysis of paraffin-embedded human pancreas, showing staining of  $\alpha$  cells, using Glucagon Antibody.*



*Confocal immunofluorescent analysis of normal mouse pancreas using Glucagon Antibody (green). Blue pseudocolor = DRAQ5® #4084 (fluorescent DNA dye).*

*Immunohistochemical analysis of frozen mouse pancreas using Glucagon Antibody.*



**Storage:** Supplied in 10 mM sodium HEPES (pH 7.5), 150 mM NaCl, 100 µg/ml BSA and 50% glycerol. Store at  $-20^{\circ}\text{C}$ . *Do not aliquot the antibody.*

**\*\*Anti-rabbit secondary antibodies must be used to detect this antibody.**

**Recommended Antibody Dilutions:**

Immunohistochemistry (Paraffin)	1:100
Unmasking buffer:	Citrate
Antibody diluent:	TBST-5%NGS
Immunohistochemistry (Frozen)	1:100
Fixative:	3% Formaldehyde
Immunofluorescence (Frozen)	1:200

**For application specific protocols please see the web page for this product at [www.cellsignal.com](http://www.cellsignal.com).**

**Companion Products:**

- Insulin Antibody (IHC Specific) #4590
- C-Peptide Antibody (IHC Specific) #4593

**Please visit [www.cellsignal.com](http://www.cellsignal.com) for a complete listing of recommended companion products.**