

#2772 Store at -20°C

Bax Antibody

✓ 100 µl
(10 western blots)

Orders ■ 877-616-CELL (2355)
orders@cellsignal.com
Support ■ 877-678-TECH (8324)
info@cellsignal.com
Web ■ www.cellsignal.com

rev. 02/02/10

This product is intended for research purposes only. This product is not intended to be used for therapeutic or diagnostic purposes in humans or animals.

Applications	Species Cross-Reactivity*	Molecular Wt.	Source
W, IP Endogenous	H, M, R, Mk	20 kDa	Rabbit**

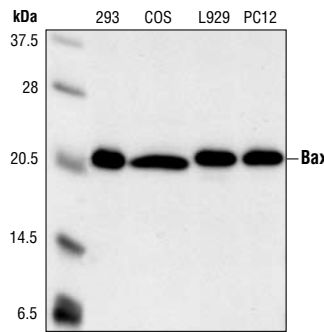
Background: Bax is a key component for cellular induced apoptosis through mitochondrial stress (1). Upon apoptotic stimulation, Bax forms oligomers and translocates from the cytosol to the mitochondrial membrane (2). Through interactions with pore proteins on the mitochondrial membrane, Bax increases the membrane's permeability, which leads to the release of cytochrome c from mitochondria, activation of caspase-9 and initiation of the caspase activation pathway for apoptosis (3,4).

Specificity/Sensitivity: Bax Antibody detects endogenous levels of total Bax protein. The antibody does not cross-react with other Bcl-2 family members.

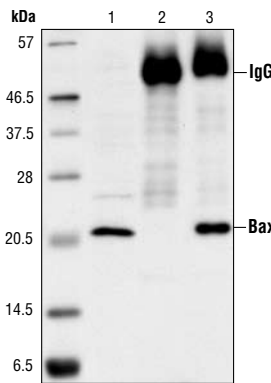
Source/Purification: Polyclonal antibodies are produced by immunizing animals with a synthetic peptide (KLH-coupled) corresponding to the amino-terminal residues of human Bax. Antibodies are purified by protein A and peptide affinity chromatography.

Background References:

- (1) Wei, M.C. et al. (2001) *Science* 292, 727–730.
- (2) Jurgensmeier, J.M. et al. (1998) *Proc. Natl. Acad. Sci. USA* 95, 4997–5002.
- (3) Narita, M. et al. (1998) *Proc. Natl. Acad. Sci. USA* 95, 14681–14686.
- (4) Marzo, I. et al. (1998) *Science* 281, 2027–2031.



Western blot analysis of extracts from 293 (human), COS (monkey), L929 (mouse) and PC12 (rat) cells, using Bax Antibody.



Immunoprecipitation of Bax from Jurkat cell extract, using Bax Antibody. Lane 1 is the lysate control; lane 2 is antibody alone; lane 3 is antibody plus lysate.

Entrez-Gene ID #581
Swiss-Prot Acc. #Q07812

Storage: Supplied in 10 mM sodium HEPES (pH 7.5), 150 mM NaCl, 100 µg/ml BSA and 50% glycerol. Store at -20°C. Do not aliquot the antibody.

*Species cross-reactivity is determined by western blot.

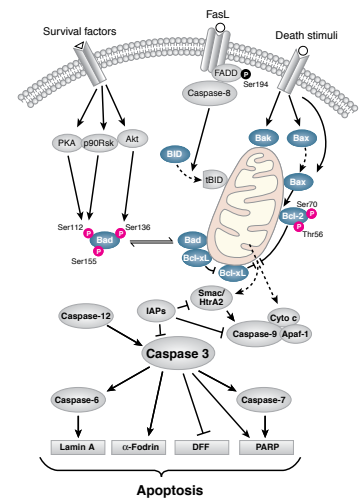
**Anti-rabbit secondary antibodies must be used to detect this antibody.

Recommended Antibody Dilutions:

Western blotting 1:1000
Immunoprecipitation 1:100

For application specific protocols please see the web page for this product at www.cellsignal.com.

Please visit www.cellsignal.com for a complete listing of recommended companion products.



IMPORTANT: For western blots, incubate membrane with diluted antibody in 5% w/v BSA, 1X TBS, 0.1% Tween-20 at 4°C with gentle shaking, overnight.