

SET7/SET9 Antibody

✓ 100 µl
(10 western blots)

Orders ■ 877-616-CELL (2355)
orders@cellsignaling.com
Support ■ 877-678-TECH (8324)
info@cellsignaling.com
Web ■ www.cellsignaling.com

rev. 01/19/10

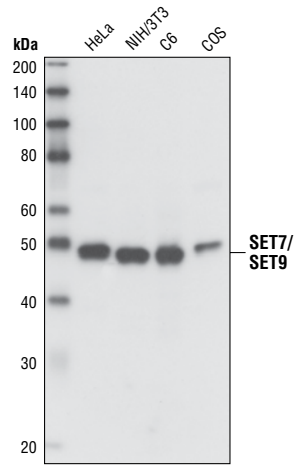
This product is intended for research purposes only. This product is not intended to be used for therapeutic or diagnostic purposes in humans or animals.

Applications	Species Cross-Reactivity*	Molecular Wt.	Source
W, IF-IC Endogenous	H, M, R, Mk	48 kDa	Rabbit**

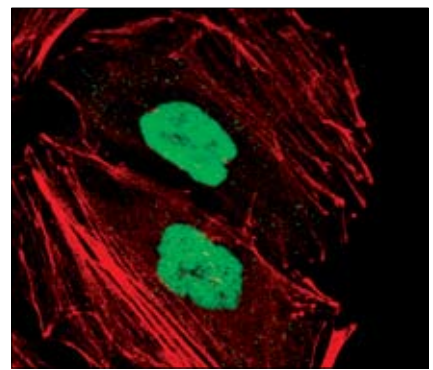
Background: SET7/SET9 is a member of the SET domain-containing family, and can specifically methylate Lys4 on histone H3 (1). Like most other lysine-directed histone methyltransferases, it contains a conserved catalytic SET domain originally identified in the *Drosophila* Su(var)3-9, Enhancer of zeste and Trithorax proteins. Histone methylation is a major determinant for the formation of active and inactive regions of the genome and is crucial for the proper programming of the genome during development (2,3). Methylation of histone H3 Lys4 enhances transcriptional activation by coordinating the recruitment of BPTF, a component of the NURF chromatin remodeling complex, and WDR5, a component of multiple histone methyltransferase complexes (4,5). In addition, methylation of lysine 4 blocks transcriptional repression by inhibiting the binding of the NURD histone deacetylation complex to the amino-terminal tail of histone H3 and interfering with SUV39H1-mediated methylation of histone H3 Lys9 (1). SET7/SET9 is highly active on free histone H3, but only very weakly methylates H3 within nucleosomes (1). Besides histones, SET7/SET9 also methylates Lys189 of the TAF10, a member of the TFIID transcription factor complex, and Lys372 of the p53 tumor suppressor protein (6,7). Methylation of TAF10 stimulates transcription in a promoter-specific manner by increasing the affinity of TAF-10 for RNA polymerase II, which may potentiate pre-initiation complex formation (6). Methylation of p53 at Lys372 increases protein stability and leads to upregulation of target genes such as p21. Thus the loss of SET7/SET9 may represent another mechanism for the inactivation of p53 in human cancers (7).

Specificity/Sensitivity: SET7/SET9 Antibody detects endogenous levels of total SET7/SET9 protein. This antibody does not cross-react with other SET domain-containing proteins.

Source/Purification: Polyclonal antibodies are produced by immunizing animals with a synthetic peptide (KLH-coupled) corresponding to the human SET7/SET9 protein. Antibodies are purified by protein A and peptide affinity chromatography.



Western blot analysis of cell lysates from HeLa, NIH/3T3, C6 and COS cells using SET7/SET9 Antibody.



Confocal immunofluorescent analysis of HeLa cells using SET7/SET9 Antibody (green). Actin filaments have been labeled with Alexa Fluor 555 phalloidin (red).

Entrez-Gene ID #80854
Swiss-Prot Acc. #Q8WTS6

Storage: Supplied in 10 mM HEPES (pH 7.5), 150 mM NaCl, 100 µg/ml BSA and 50% glycerol. Store at -20°C. Do not aliquot the antibody.

*Species cross-reactivity is determined by western blot.

**Anti-rabbit secondary antibodies must be used to detect this antibody.

Recommended Antibody Dilutions:

Western blotting	1:1000
Immunofluorescence (IF-IC)	1:25

Background References:

- (1) Nishioka, K. et al. (2002) *Genes Dev.* 16, 479–489.
- (2) Kubicek, S. et al. (2006) *Ernst Schering Res. Found. Workshop*, 1–27.
- (3) Lin, W. and Dent, S.Y. (2006) *Curr. Opin. Genet. Dev.* 16, 137–142.
- (4) Wysocka, J. et al. (2006) *Nature* 442, 86–90.
- (5) Wysocka, J. et al. (2005) *Cell* 121, 859–872.
- (6) Kouskouti, A. et al. (2004) *Mol. Cell* 14, 175–182.
- (7) Chuikov, S. et al. (2004) *Nature* 432, 353–360.

IMPORTANT: For western blots, incubate membrane with diluted antibody in 5% w/v BSA, 1X TBS, 0.1% Tween-20 at 4°C with gentle shaking, overnight.

Alexa Fluor® is a registered trademark of Molecular Probes, Inc.

Applications Key: W—Western IP—Immunoprecipitation IHC—Immunohistochemistry ChIP—Chromatin Immunoprecipitation IF—Immunofluorescence F—Flow cytometry E-P—ELISA-Peptide
Species Cross-Reactivity Key: H—human M—mouse R—rat Hm—hamster Mk—monkey Mi—mink C—chicken Dm—D. melanogaster X—Xenopus Z—zebrafish B—bovine
Dg—dog Pg—pig Sc—S. cerevisiae Ce—C. elegans Hr—Horse All—all species expected Species enclosed in parentheses are predicted to react based on 100% homology.