

# Rabbit (DA1E) mAb IgG XP™ Isotype Control (Alexa Fluor® 488 Conjugate)

✓ 100 µl

**Orders** ■ 877-616-CELL (2355)  
orders@cellsignal.com

**Support** ■ 877-678-TECH (8324)  
info@cellsignal.com

**Web** ■ www.cellsignal.com

rev. 12/02/09

This product is intended for research purposes only. This product is not intended to be used for therapeutic or diagnostic purposes in humans or animals.

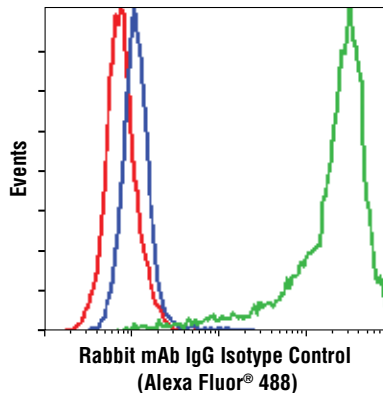
Concentration	Applications	Isotype
100 µg/ml	F	Rabbit IgG

**Background:** Isotype control antibodies are used to estimate the non-specific binding of target primary antibodies due to F<sub>c</sub> receptor binding or other protein-protein interactions. An isotype control antibody should have the same immunoglobulin type as the test antibody.

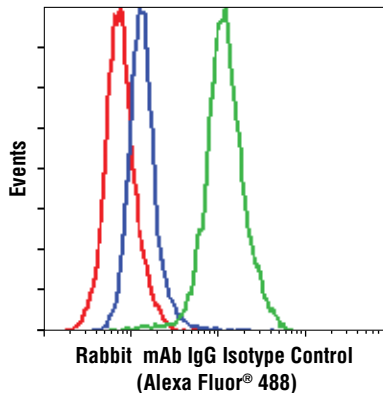
**Description:** This Cell Signaling Technology antibody is conjugated to Alexa Fluor® 488 fluorescent dye and tested in-house for direct flow cytometric analysis of human cells.

**Specificity/Sensitivity:** Rabbit (DA1E) mAb IgG XP™ Isotype Control is not expected to recognize any specific antigen. It functions as an isotype control for rabbit monoclonal antibodies.

**Directions for Use: Important!** This control antibody must be diluted to the same concentration (not dilution) as the specific antibody in analysis. Higher background fluorescence may result if excessive amounts of rabbit IgG isotype control are used. Do not use this antibody at 1:10 dilution in the same way as recommended for other CST Alexa Fluor® conjugated antibodies.



Flow cytometric analysis of Jurkat cells, using Rabbit (DA1E) mAb IgG XP™ Isotype Control (Alexa Fluor® 488 Conjugate) (red) compared to Phospho-S6 Ribosomal Protein (Ser235/236) (D57.2.2E) XP™ Rabbit mAb (Alexa Fluor® 488 Conjugate) #4803, untreated (blue) or IFN-α-treated (green).



Flow cytometric analysis of Jurkat cells, using Rabbit (DA1E) mAb IgG XP™ Isotype Control (Alexa Fluor® 488 Conjugate) (red) compared to Phospho-Akt (Ser473) (D9E) XP™ Rabbit mAb (Alexa Fluor® 488 Conjugate) #4071, untreated (green) or LY294002- and wortmannin-treated (blue).

**Storage:** Supplied in PBS (pH 7.2), less than 0.1% sodium azide, 2 mg/ml BSA. Store at 4°C. *Protect from light. Do not freeze.*

**Note:** This control antibody must be diluted to the same concentration (not dilution) as the specific antibody in analysis. See Directions on Use.

**Recommended Antibody Dilutions:**

Flow Cytometry:  
Match IgG concentration of primary antibody.

**For application specific protocols please see the web page for this product at [www.cellsignal.com](http://www.cellsignal.com).**

**Please visit [www.cellsignal.com](http://www.cellsignal.com) for a complete listing of recommended companion products.**

The Alexa Fluor® dye antibody conjugates in this product are sold under license from Molecular Probes, Inc., for research use only, except for use in combination with DNA microarrays. The Alexa Fluor® dyes (except for Alexa Fluor® 430 dye) are covered by pending and issued patents.

Alexa Fluor® is a registered trademark of Molecular Probes, Inc.

**Applications Key:** W—Western IP—Immunoprecipitation IHC—Immunohistochemistry ChIP—Chromatin Immunoprecipitation IF—Immunofluorescence F—Flow cytometry E-P—ELISA-Peptide

**Species Cross-Reactivity Key:** H—human M—mouse R—rat Hm—hamster Mk—monkey Mi—mink C—chicken Dm—D. melanogaster X—Xenopus Z—zebrafish B—bovine

Dg—dog Pg—pig Sc—S. cerevisiae Ce—C. elegans Hr—Horse All—all species expected