

#3092 Store at -20°C

Aurora A/AIK Antibody

100 µl
 (10 Western mini-blots)



Orders ■ 877-616-CELL (2355)
 orders@cellsignal.com
Support ■ 877-678-TECH (8324)
 info@cellsignal.com
Web ■ www.cellsignal.com

rev. 07/27/07

This product is for *in vitro* research use only and is not intended for use in humans or animals.

Applications	Species Cross-Reactivity*	Molecular Wt.	Source
W	H, M, Mk	48 kDa	Rabbit

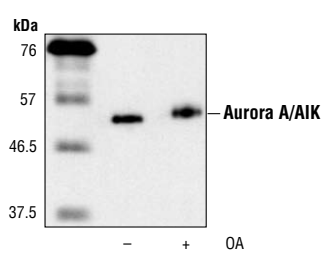
Background: Aurora A/AIK, a cell cycle-regulated serine/threonine protein kinase, is overexpressed in many tumor cell lines (1–3). Phosphorylation of Thr288, which is within the activation loop of the kinase, results in a significant increase in its activity and may target it for proteasomal degradation during mitosis (4). The closely-related kinase Aurora B/AIM1 has been implicated in multiple mitotic events (5), and siRNA silencing of Aurora B expression results in reduced histone H3 phosphorylation, aberrant chromosome alignment/segregation and altered survivin localization (6).

Specificity/Sensitivity: Aurora A/AIK Antibody detects endogenous levels of total Aurora A/AIK protein. The antibody may cross-react with AIK3.

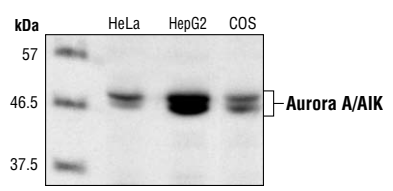
Source/Purification: Polyclonal antibodies are produced by immunizing rabbits with a synthetic peptide (KLH-coupled) corresponding to the amino terminus of human Aurora A/AIK. Antibodies are purified by protein A and peptide affinity chromatography.

Background References:

- (1) Bischoff, J.R. et al. (1998) *EMBO J.* 17, 3052–3065.
- (2) Zhou, H. et al. (1998) *Nat. Genet.* 20, 189–193.
- (3) Sen, S. et al. (1997) *Oncogene* 14, 2195–2200.
- (4) Walter, A.O. et al. (2000) *Oncogene* 19, 4906–4916.
- (5) Kallio, M.J. et al. (2002) *Curr. Biol.* 12, 900–905.
- (6) Hauf, S. et al. (2003) *J. Cell Biol.* 161, 281–294.



Western blot analysis of purified mouse His-Aurora A/AIK expressed in Sf9 insect cells, untreated or treated with okadaic acid 1 hour prior to harvest, using Aurora A/AIK Antibody.



Western blot analysis of extracts from HeLa, HepG2 and COS cells, using Aurora 2/AIK Antibody.

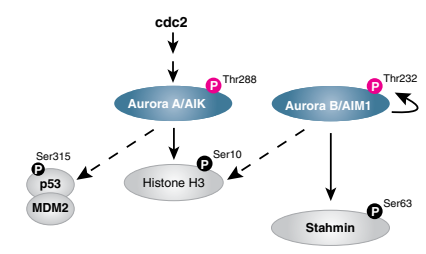
Storage: Supplied in 10 mM sodium HEPES (pH 7.5), 150 mM NaCl, 100 µg/ml BSA and 50% glycerol. Store at -20°C. Do not aliquot the antibody.

***Species cross-reactivity is determined by Western blot.**

Recommended Antibody Dilutions:
 Western blotting 1:1000

Companion Products:
 Phospho-Aurora A (Thr288)/Aurora B (Thr232)/Aurora C (Thr198) Antibody #3068

- Aurora A/AIK (1G4) Rabbit mAb #4718
- Aurora B/AIM1 Antibody #3094
- Anti-rabbit IgG, HRP-linked Antibody #7074
- Prestained Protein Marker, Broad Range (Premixed Format) #7720
- Biotinylated Protein Ladder Detection Pack #7727
- 20X LumiGLO® Reagent and 20X Peroxide #7003



IMPORTANT: For Western blots, incubate membrane with diluted antibody in 5% BSA, 1X TBS, 0.1% Tween-20 at 4°C with gentle shaking, overnight.

Applications Key: W—Western IP—Immunoprecipitation IHC—Immunohistochemistry IC—Immunocytochemistry IF—Immunofluorescence
Species Cross-Reactivity Key: H—human M—mouse R—rat Hm—hamster Mk—monkey Mi—mink C—chicken X—Xenopus
 Species enclosed in parentheses are predicted to react based on 100% sequence homology.

F—Flow cytometry E—ELISA D—DELFIATM
 Z—zebra fish B—bovine All—all species expected

Western Immunoblotting Protocol (Primary Antibody Incubation in BSA)

For Western blots, incubate membrane with diluted antibody in 5% w/v BSA, 1X TBS, 0.1% Tween-20 at 4°C with gentle shaking, overnight.

A Solutions and Reagents

NOTE: Prepare solutions with Milli-Q or equivalently purified water.

- 1X Phosphate Buffered Saline (PBS)
- 1X SDS Sample Buffer:** 62.5 mM Tris-HCl (pH 6.8 at 25°C), 2% w/v SDS, 10% glycerol, 50 mM DTT, 0.01% w/v bromophenol blue or phenol red
- Transfer Buffer:** 25 mM Tris base, 0.2 M glycine, 20% methanol (pH 8.5)
- 10X Tris Buffered Saline (TBS):** To prepare 1 liter of 10X TBS: 24.2 g Tris base, 80 g NaCl; adjust pH to 7.6 with HCl (use at 1X).
- Nonfat Dry Milk (weight to volume [w/v])
- Blocking Buffer:** 1X TBS, 0.1% Tween-20 with 5% w/v nonfat dry milk; for 150 ml, add 15 ml 10X TBS to 135 ml water, mix. Add 7.5 g nonfat dry milk and mix well. While stirring, add 0.15 ml Tween-20 (100%).
- Wash Buffer:** 1X TBS, 0.1% Tween-20 (TBS/T)
- Bovine Serum Albumin (BSA)
- Primary Antibody Dilution Buffer:** 1X TBS, 0.1% Tween-20 with 5% BSA; for 20 ml, add 2 ml 10X TBS to 18 ml water, mix. Add 1.0 g BSA and mix well. While stirring, add 20 µl Tween-20 (100%).
- Phototope®-HRP Western Blot Detection System #7071:** Includes biotinylated protein ladder, secondary anti-rabbit (#7074) antibody conjugated to horseradish peroxidase (HRP), anti-biotin antibody conjugated to HRP, LumiGLO® chemiluminescent reagent and peroxide.
- Prestained Protein Marker, Broad Range (Premixed Format) #7720
- Biotinylated Protein Ladder Detection Pack #7727
- Blotting Membrane:** This protocol has been optimized for nitrocellulose membranes, which CST recommends. PVDF membranes may also be used.

B Protein Blotting

A general protocol for sample preparation is described below.

- Treat cells by adding fresh media containing regulator for desired time.
- Aspirate media from cultures; wash cells with 1X PBS; aspirate.
- Lyse cells by adding 1X SDS sample buffer (100 µl per well of 6-well plate or 500 µl per plate of 10 cm diameter plate). Immediately scrape the cells off the plate and transfer the extract to a microcentrifuge tube. Keep on ice.
- Sonicate for 10–15 seconds to shear DNA and reduce sample viscosity.
- Heat a 20 µl sample to 95–100°C for 5 minutes; cool on ice.
- Microcentrifuge for 5 minutes.
- Load 20 µl onto SDS-PAGE gel (10 cm x 10 cm).

NOTE: CST recommends loading prestained molecular weight markers (#7720, 10 µl/lane) to verify electrotransfer and biotinylated protein ladder (#7727, 10 µl/lane) to determine molecular weights.

- Electrotransfer to nitrocellulose or PVDF membrane.

C Membrane Blocking and Antibody Incubations

NOTE: Volumes are for 10 cm x 10 cm (100 cm²) of membrane; for different sized membranes, adjust volumes accordingly.

- (Optional) After transfer, wash nitrocellulose membrane with 25 ml TBS for 5 minutes at room temperature.
- Incubate membrane in 25 ml of blocking buffer for 1 hour at room temperature.
- Wash three times for 5 minutes each with 15 ml of TBS/T.
- Incubate membrane and primary antibody (at the appropriate dilution) in 10 ml primary antibody dilution buffer with gentle agitation overnight at 4°C.
- Wash three times for 5 minutes each with 15 ml of TBS/T.
- Incubate membrane with HRP-conjugated secondary antibody (1:2000) and HRP-conjugated anti-biotin antibody (1:1000) to detect biotinylated protein markers in 10 ml of blocking buffer with gentle agitation for 1 hour at room temperature.
- Wash three times for 5 minutes each with 15 ml of TBS/T.

D Detection of Proteins

- Incubate membrane with 10 ml LumiGLO® (0.5 ml 20X LumiGLO®, 0.5 ml 20X Peroxide and 9.0 ml Milli-Q water) with gentle agitation for 1 minute at room temperature.

NOTE: LumiGLO® substrate can be further diluted if signal response is too fast.

- Drain membrane of excess developing solution (do not let dry), wrap in plastic wrap and expose to x-ray film. An initial 10-second exposure should indicate the proper exposure time.

NOTE: Due to the kinetics of the detection reaction, signal is most intense immediately following LumiGLO® incubation and declines over the following 2 hours.