

Aurora B/AIM1 Antibody

✓ 100 µl
(10 western blots)

Orders ■ 877-616-CELL (2355)
orders@cellsignaling.com
Support ■ 877-678-TECH (8324)
info@cellsignaling.com
Web ■ www.cellsignaling.com

rev. 04/06/10

This product is intended for research purposes only. This product is not intended to be used for therapeutic or diagnostic purposes in humans or animals.

Entrez-Gene ID #9212
Swiss-Prot Acc. #Q96GD4

Applications	Species Cross-Reactivity*	Molecular Wt.	Source
W, IP, F Endogenous	H, M, R, Mk	40 kDa	Rabbit**

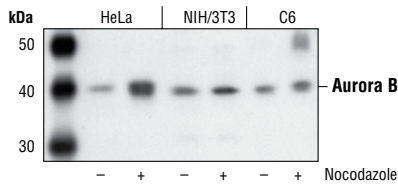
Background: Aurora A/AIK, a cell cycle-regulated serine/threonine protein kinase, is overexpressed in many tumor cell lines (1–3). Phosphorylation of Thr288, which is within the activation loop of the kinase, results in a significant increase in its activity and may target it for proteasomal degradation during mitosis (4). The closely-related kinase Aurora B/AIM1 has been implicated in multiple mitotic events (5), and siRNA silencing of Aurora B expression results in reduced histone H3 phosphorylation, aberrant chromosome alignment/segregation and altered survivin localization (6).

Specificity/Sensitivity: Aurora B/AIM1 Antibody detects endogenous levels of Aurora B/AIM1 protein.

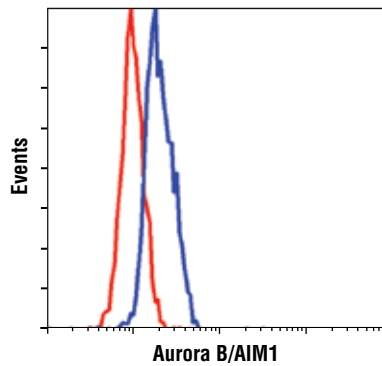
Source/Purification: Polyclonal antibodies are produced by immunizing animals with a synthetic peptide corresponding to the amino terminus of human Aurora B/AIM1. Antibodies are purified by protein A and peptide affinity chromatography.

Background References:

- (1) Bischoff, J.R. et al. (1998) *EMBO J.* 17, 3052–3065.
- (2) Zhou, H. et al. (1998) *Nat. Genet.* 20, 189–193.
- (3) Sen, S. et al. (1997) *Oncogene* 14, 2195–2200.
- (4) Walter, A.O. et al. (2000) *Oncogene* 19, 4906–4916.
- (5) Kallio, M.J. et al. (2002) *Curr. Biol.* 12, 900–905.
- (6) Hauf, S. et al. (2003) *J. Cell Biol.* 161, 281–294.



Western blot analysis of extracts from HeLa, NIH/3T3 and C6 cells, untreated or nocodazole-treated (50 ng/ml, 24 hrs), using Aurora B/AIM1 Antibody.



Flow cytometric analysis of HeLa cells, using Aurora B/AIM1 Antibody (blue) compared to a nonspecific negative control antibody (red).

Storage: Supplied in 10 mM sodium HEPES (pH 7.5), 150 mM NaCl, 100 µg/ml BSA and 50% glycerol. Store at -20°C. Do not aliquot the antibody.

*Species cross-reactivity is determined by western blot.

**Anti-rabbit secondary antibodies must be used to detect this antibody.

Recommended Antibody Dilutions:

Western blotting	1:1000
Immunoprecipitation	1:200
Flow Cytometry	1:50

For application specific protocols please see the web page for this product at www.cellsignaling.com.

Please visit www.cellsignaling.com for a complete listing of recommended companion products.

IMPORTANT: For western blots, incubate membrane with diluted antibody in 5% w/v BSA, 1X TBS, 0.1% Tween-20 at 4°C with gentle shaking, overnight.