

Aldolase Antibody

✓ 100 µl
(10 western blots)

Orders ■ 877-616-CELL (2355)
orders@cellsignal.com

Support ■ 877-678-TECH (8324)
info@cellsignal.com

Web ■ www.cellsignal.com

rev. 08/11/10

This product is intended for research purposes only. This product is not intended to be used for therapeutic or diagnostic purposes in humans or animals.

Entrez-Gene ID #226, 229, 230
Swiss-Prot Acc. #P04075, P05062, P09972

Applications	Species Cross-Reactivity*	Molecular Wt.	Source
W Endogenous	H, M, R, Hm, Mk	40 kDa	Rabbit**

Background: Aldolase (fructose biphosphate aldolase), a glycolytic enzyme, catalyzes the conversion of fructose 1, 6-biphosphate to 3-phosphoglycerdehyde. This ubiquitous enzyme is present as three different isozymes: aldolase A, aldolase B and aldolase C. Studies suggest the potential diagnostic value of quantitative analysis of aldolase A for hepatocarcinoma (1). Furthermore, the change of aldolase B gene expression levels has also been observed in certain patients with this primary tumor (2,3).

Specificity/Sensitivity: Aldolase Antibody detects endogenous levels of total fructose biphosphate aldolase (including aldolases A, B and C) protein.

Source/Purification: Polyclonal antibodies are produced by immunizing animals with a synthetic peptide corresponding to the sequence of human fructose biphosphate aldolase. Antibodies are purified by protein A and peptide affinity chromatography.

Background References:

- (1) Castaldo, G. et al. (2000) *Clin. Chem.* 46, 901–906.
- (2) Kinoshita, M. and Miyata, M. (2002) *Hepatology* 36, 433–438.
- (3) Song, H. et al. (2004) *World J. Gastroenterol* 10, 509–513.

Storage: Supplied in 10 mM sodium HEPES (pH 7.5), 150 mM NaCl, 100 µg/ml BSA and 50% glycerol. Store at -20°C. Do not aliquot the antibody.

*Species cross-reactivity is determined by western blot.

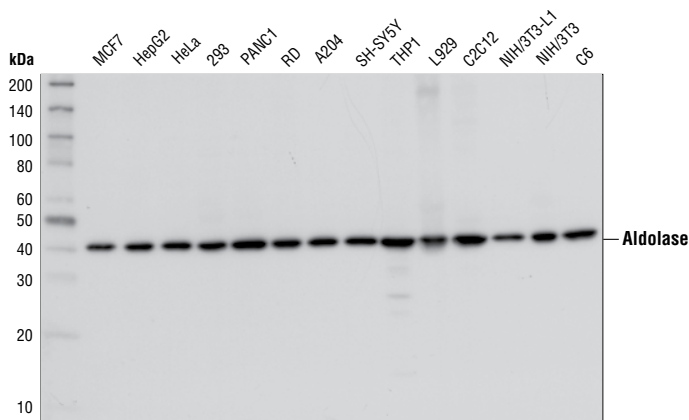
**Anti-rabbit secondary antibodies must be used to detect this antibody.

Recommended Antibody Dilutions:

Western blotting 1:1000

For application specific protocols please see the web page for this product at www.cellsignal.com.

Please visit www.cellsignal.com for a complete listing of recommended companion products.



Western blot analysis of extracts from various cell lines, using Aldolase Antibody.

IMPORTANT: For western blots, incubate membrane with diluted antibody in 5% w/v BSA, 1X TBS, 0.1% Tween-20 at 4°C with gentle shaking, overnight.

Applications Key: W—Western IP—Immunoprecipitation IHC—Immunohistochemistry ChIP—Chromatin Immunoprecipitation IF—Immunofluorescence F—Flow cytometry E-P—ELISA-Peptide

Species Cross-Reactivity Key: H—human M—mouse R—rat Hm—hamster Mk—monkey Mi—mink C—chicken Dm—D. melanogaster X—Xenopus Z—zebrafish B—bovine

Dg—dog Pg—pig Sc—S. cerevisiae Ce—C. elegans Hr—horse

All—all species expected

Species enclosed in parentheses are predicted to react based on 100% homology.