

# Androgen Receptor Antibody

✓ 100 µl  
(10 western blots)

**Orders** ■ 877-616-CELL (2355)  
orders@cellsignal.com

**Support** ■ 877-678-TECH (8324)  
info@cellsignal.com

**Web** ■ www.cellsignal.com

rev. 08/31/10

This product is intended for research purposes only. This product is not intended to be used for therapeutic or diagnostic purposes in humans or animals.

Entrez-Gene ID #367  
Swiss-Prot Acc. #P10275

Applications	Species Cross-Reactivity*	Molecular Wt.	Source
W Endogenous	H	110 kDa	Rabbit**

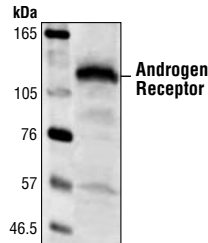
**Background:** Androgen receptor (AR), a zinc finger transcription factor belonging to the nuclear receptor superfamily, is activated by phosphorylation and dimerization upon ligand binding (1). This promotes nuclear localization and binding of AR to androgen response elements in the androgen target genes. AR plays a crucial role in several stages of male development and the progression of prostate cancer (2,3).

**Specificity/Sensitivity:** Androgen Receptor Antibody detects endogenous levels of total androgen receptor.

**Source/Purification:** Polyclonal antibodies are produced by immunizing animals with a synthetic peptide corresponding to residues surrounding Ser213 of human androgen receptor. Antibodies are purified by protein A and peptide affinity chromatography.

#### Background References:

- (1) Brinkman, A.O. et al. (1999) *J. Steroid. Biochem. Mol. Biol.* 69, 307–313.
- (2) Avila, D.M. et al. (2001) *J. Steroid. Biochem. Mol. Biol.* 76, 135–142.
- (3) Montgomery, J.S. et al. (2001) *J. Pathol.* 195, 138–146.



Western blot analysis of extracts from LNCaP cells using Androgen Receptor Antibody.

**Storage:** Supplied in 10 mM sodium HEPES (pH 7.5), 150 mM NaCl, 100 µg/ml BSA and 50% glycerol. Store at -20°C. Do not aliquot the antibody.

\*Species cross-reactivity is determined by western blot.

\*\*Anti-rabbit secondary antibodies must be used to detect this antibody.

#### Recommended Antibody Dilutions:

Western Blotting 1:1000

For application specific protocols please see the web page for this product at [www.cellsignal.com](http://www.cellsignal.com).

Please visit [www.cellsignal.com](http://www.cellsignal.com) for a complete listing of recommended companion products.

**IMPORTANT: For western blots, incubate membrane with diluted antibody in 5% w/v BSA, 1X TBS, 0.1% Tween-20 at 4°C with gentle shaking, overnight.**

**Applications Key:** W—Western IP—Immunoprecipitation IHC—Immunohistochemistry ChIP—Chromatin Immunoprecipitation IF—Immunofluorescence F—Flow cytometry E-P—ELISA-Peptide

**Species Cross-Reactivity Key:** H—human M—mouse R—rat Hm—hamster Mk—monkey Mi—mink C—chicken Dm—D. melanogaster X—Xenopus Z—zebrafish B—bovine

Dg—dog Pg—pig Sc—S. cerevisiae Ce—C. elegans Hr—horse All—all species expected Species enclosed in parentheses are predicted to react based on 100% homology.