

#3313 Store at **-20°C**

Phospho-Cofilin (Ser3) (77G2) Rabbit mAb

- Small 100 μ l (10 western blots)
- Large 300 μ l (30 western blots)



Orders ■ 877-616-CELL (2355)
 orders@cellsignal.com
Support ■ 877-678-TECH (8324)
 info@cellsignal.com
Web ■ www.cellsignal.com

rev. 06/20/11

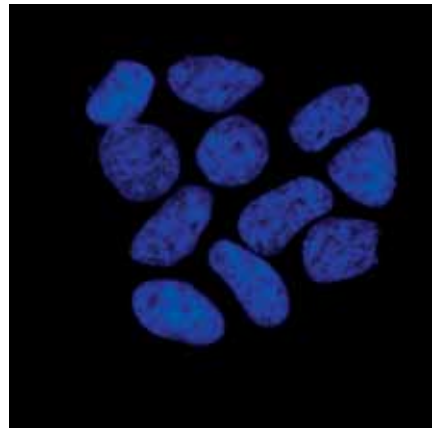
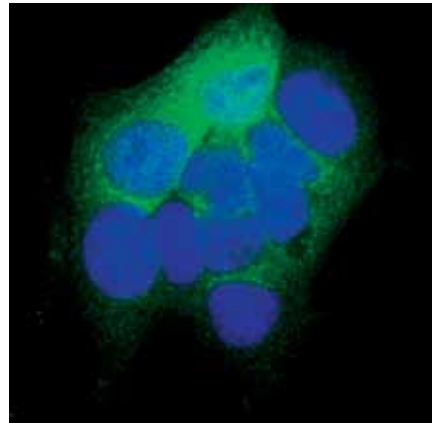
This product is intended for research purposes only. This product is not intended to be used for therapeutic or diagnostic purposes in humans or animals.

Applications	Species Cross-Reactivity*	Molecular Wt.	Isotype
W, IF-IC Endogenous	H, M, R, Mk, B	19 kDa	Rabbit IgG**

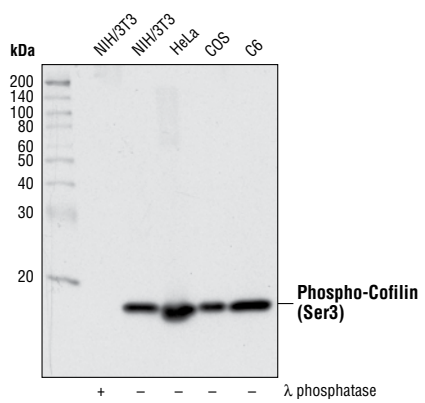
Background: Cofilin and ADF (actin-depolymerization factor) are members of a family of essential conserved small actin-binding proteins that play pivotal roles in cytokinesis, endocytosis, embryonic development, stress response and tissue regeneration (1). In response to stimuli, cofilin promotes the regeneration of actin filaments by severing preexisting filaments (2). The severing activity of cofilin is inhibited by LIMK or TESK phosphorylation at Ser3 of cofilin (3-5). Phosphorylation at Ser3 also regulates cofilin translocation from the nucleus to the cytoplasm (6).

Specificity/Sensitivity: Phospho-Cofilin (Ser3) (77G2) Rabbit mAb detects endogenous levels of cofilin only when phosphorylated at serine 3.

Source/Purification: Monoclonal antibody is produced by immunizing animals with a synthetic phosphopeptide corresponding to residues surrounding Ser3 of human cofilin.



Confocal immunofluorescent analysis of MCF7 cells either untreated (left) or λ phosphatase-treated (right), using Phospho-Cofilin (Ser3) (77G2) Rabbit mAb (green). Blue pseudocolor = DRAQ5® #4084 (fluorescent DNA dye).



Western blot analysis of NIH/3T3 cells, λ phosphatase-treated or untreated, and various other cell lines, using Phospho-Cofilin (Ser3) (77G2) Rabbit mAb.

Entrez-Gene ID #1072
Swiss-Prot Acc. #P23528

Storage: Supplied in 10 mM sodium HEPES (pH 7.5), 150 mM NaCl, 100 μ g/ml BSA, 50% glycerol and less than 0.02% sodium azide. Store at -20°C . Do not aliquot the antibody.

***Species cross-reactivity is determined by western blot.**
****Anti-rabbit secondary antibodies must be used to detect this antibody.**

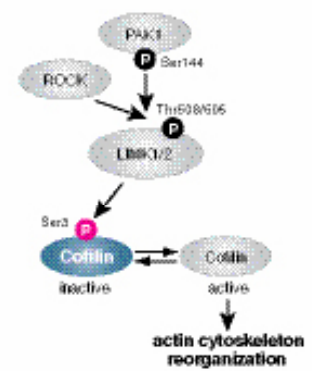
Recommended Antibody Dilutions:

Western blotting	1:1000
Immunofluorescence (IF-IC)	1:100

For application specific protocols please see the web page for this product at www.cellsignal.com.
Please visit www.cellsignal.com for a complete listing of recommended companion products.

Background References:

- (1) Carlier, M. et al. (1999) *J. Biol. Chem.* 274, 33827–33830.
- (2) Condeelis, J. (2001) *Trends Cell Biol.* 11, 288–293.
- (3) Arber, S. et al. (1998) *Nature* 393, 805–809.
- (4) Yang, N. et al. (1998) *Nature* 393, 809–812.
- (5) Toshima, J. et al. (2001) *J. Biol. Chem.* 276, 31449–31458.
- (6) Nebel, G. et al. (1996) *J. Biol. Chem.* 271, 26276–26280.



IMPORTANT: For western blots, incubate membrane with diluted antibody in 5% w/v BSA, 1X TBS, 0.1% Tween-20 at 4°C with gentle shaking, overnight.

DRAQ5® is a registered trademark of Biostatus Limited.

© 2011 Cell Signaling Technology, Inc.
 Rabbit monoclonal antibody is produced under license (granting certain rights including those under U. S. Patents No. 5,675,063 and 7,429,487) from Epitomics, Inc.

Applications Key: W—Western IP—Immunoprecipitation IHC—Immunohistochemistry ChIP—Chromatin Immunoprecipitation IF—Immunofluorescence F—Flow cytometry E-P—ELISA-Peptide
Species Cross-Reactivity Key: H—human M—mouse R—rat Hm—hamster Mk—monkey Mi—mink C—chicken Dm—D. melanogaster X—Xenopus Z—zebrafish B—bovine
 Dg—dog Pg—pig Sc—S. cerevisiae Ce—C. elegans Hr—horse All—all species expected Species enclosed in parentheses are predicted to react based on 100% homology.