

Jak1 Antibody

✓ 100 µl
(10 Western mini-blot)

Orders ■ 877-616-CELL (2355)
orders@cellsignal.com
Support ■ 877-678-TECH (8324)
info@cellsignal.com
Web ■ www.cellsignal.com

rev. 03/31/09

This product is for *in vitro* research use only and is not intended for use in humans or animals.
This product is not intended for use as a therapeutic or in diagnostic procedures.

Applications	Species Cross-Reactivity*	Molecular Wt.	Source
W, IP Endogenous	H, M, (R, B)	130 kDa	Rabbit**

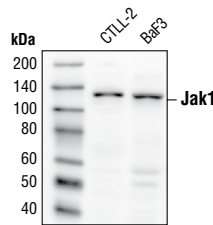
Background: Members of the Janus family of tyrosine kinases (Jak1, Jak2, Jak3 and Tyk2) are activated by ligands binding to a number of associated cytokine receptors (1). Upon cytokine receptor activation, Jak proteins become autophosphorylated and phosphorylate their associated receptors to provide multiple binding sites for signaling proteins. These associated signaling proteins typically contain SH2 or other phospho-tyrosine-binding domains, including Stats (2), Shc (3), insulin receptor substrates (4) and focal adhesion kinase (FAK) (5).

Specificity/Sensitivity: Jak1 Antibody detects endogenous levels of total Jak1 protein.

Source/Purification: Polyclonal antibodies are produced by immunizing animals with a synthetic peptide (KLH-coupled) corresponding to residues surrounding Tyr1022/1023 of human Jak1. Antibodies are purified by protein A and peptide affinity chromatography.

Background References:

- (1) Leonard, W.J. and O'Shea, J.J. (1998) *Annu. Rev. Immunol.* 16, 293–322.
- (2) Darnell, J.E. (1997) *Science* 277, 1630–1635.
- (3) VanderKuur, J. et al. (1995) *J. Biol. Chem.* 270, 7587–7593.
- (4) Argetsinger, L.S. et al. (1995) *J. Biol. Chem.* 270, 14685–14692.
- (5) Zhu, T. et al. (1998) *J. Biol. Chem.* 273, 10682–10689.



Western blot analysis of extracts from CTLL-2 and BaF3 cells using Jak1 Antibody.

Entrez-Gene ID #3716
Swiss-Prot Acc. #P23458

Storage: Supplied in 10 mM sodium HEPES (pH 7.5), 150 mM NaCl, 100 µg/ml BSA and 50% glycerol. Store at -20°C. Do not aliquot the antibody.

*Species cross-reactivity is determined by western blot.

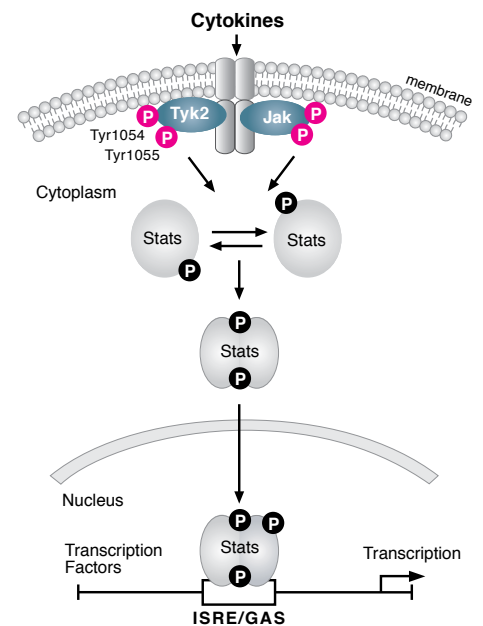
**Anti-rabbit secondary antibodies must be used to detect this antibody.

Recommended Antibody Dilutions:

Western Blotting 1:1000
Immunoprecipitation 1:100

For application specific protocols please see the web page for this product at www.cellsignal.com.

Please visit www.cellsignal.com for a complete listing of recommended companion products.



IMPORTANT: For Western blots, incubate membrane with diluted antibody in 5% w/v BSA, 1X TBS, 0.1% Tween-20 at 4°C with gentle shaking, overnight.

Applications Key: W—Western IP—Immunoprecipitation IHC—Immunohistochemistry ChIP—Chromatin Immunoprecipitation IF—Immunofluorescence F—Flow cytometry E—ELISA E-P—ELISA Peptide
Species Cross-Reactivity Key: H—human M—mouse R—rat Hm—hamster Mk—monkey Mi—mink C—chicken Dm—D. melanogaster X—Xenopus Z—zebrafish B—bovine
Dg—dog Pg—pig Sc—S. cerevisiae All—all species expected Species enclosed in parentheses are predicted to react based on 100% homology.