

#3349 Store at -20°C

SGTA Antibody

✓ 100 µl
(10 western blots)

Orders ■ 877-616-CELL (2355)
orders@cellsignal.com
Support ■ 877-678-TECH (8324)
info@cellsignal.com
Web ■ www.cellsignal.com

rev. 09/09/10

This product is intended for research purposes only. This product is not intended to be used for therapeutic or diagnostic purposes in humans or animals.

Applications	Species Cross-Reactivity*	Molecular Wt.	Source
W Endogenous	H	34 kDa	Rabbit**

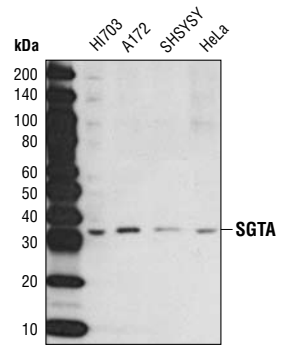
Background: SGTA, small glutamine-rich tetratricopeptide repeat-containing protein A, is an ubiquitously expressed co-chaperone that binds directly to HSC70 and HSP70 and regulates their ATPase activity (1,2). SGTA is a 34 kDa protein that is rich in glutamine residues at its C terminus and contains three tandemly repeated TPR motifs (3). The TPR domain of SGTA shows sequence similarity to the TPR domains of Hop, CHIP, and TOM70 (4). The TPR domain of SGTA also interacts with HSP90 and was recently found to be a pro-apoptotic factor (5,6).

Specificity/Sensitivity: SGTA Antibody detects endogenous levels of total SGTA protein.

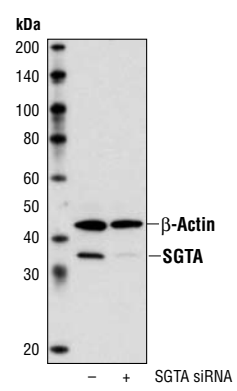
Source/Purification: Polyclonal antibodies are produced by immunizing animals with a synthetic peptide corresponding to human SGTA. Antibodies are purified by protein A and peptide affinity chromatography.

Background References:

- (1) Liu, F.H. et al. (1999) *J Biol Chem* 274, 34425–32.
- (2) Tobaben, S. et al. (2003) *J Biol Chem* 278, 38376–83.
- (3) Cziepluch, C. et al. (1998) *J Virol* 72, 4149–56.
- (4) Scheufler, C. et al. (2000) *Cell* 101, 199–210.
- (5) Liou, S.T. and Wang, C. (2005) *Arch Biochem Biophys* 435, 253–63.
- (6) Yin, H. et al. (2006) *Biochem Biophys Res Commun* 343, 1153–8.



Western blot analysis of extracts from various cell lines using SGTA Antibody.



Western blot analysis of extracts from H1703 cells transfected with non-targeted (-) or SGTA targeted (+) siRNA. SGTA Antibody confirms the silencing of protein expression while β-Actin Antibody #4967 is used to control for loading.

Entrez-Gene ID #6449
Swiss-Prot Acc. #O43765

Storage: Supplied in 10 mM sodium HEPES (pH 7.5), 150 mM NaCl, 100 µg/ml BSA and 50% glycerol. Store at -20°C. Do not aliquot the antibody.

*Species cross-reactivity is determined by western blot.

**Anti-rabbit secondary antibodies must be used to detect this antibody.

Recommended Antibody Dilutions:

Western blotting 1:1000

For application specific protocols please see the web page for this product at www.cellsignal.com.

Please visit www.cellsignal.com for a complete listing of recommended companion products.

IMPORTANT: For western blots, incubate membrane with diluted antibody in 5% w/v BSA, 1X TBS, 0.1% Tween-20 at 4°C with gentle shaking, overnight.

Applications Key: W—Western IP—Immunoprecipitation IHC—Immunohistochemistry ChIP—Chromatin Immunoprecipitation IF—Immunofluorescence F—Flow cytometry E-P—ELISA-Peptide
Species Cross-Reactivity Key: H—human M—mouse R—rat Hm—hamster Mk—monkey Mi—mink C—chicken Dm—D. melanogaster X—Xenopus Z—zebrafish B—bovine
Dg—dog Pg—pig Sc—S. cerevisiae Ce—C. elegans Hr—horse All—all species expected Species enclosed in parentheses are predicted to react based on 100% homology.