

**#3360** Store at -20°C

# RagC Antibody

100 µl  
 (10 Western mini-blot)



**Orders** ■ 877-616-CELL (2355)  
 orders@cellsignal.com  
**Support** ■ 877-678-TECH (8324)  
 info@cellsignal.com  
**Web** ■ www.cellsignal.com

New 11/08

This product is for *in vitro* research use only and is not intended for use in humans or animals.  
 This product is not intended for use as a therapeutic or in diagnostic procedures.

Applications	Species Cross-Reactivity*	Molecular Wt.	Source
W, IP, IF-IC Endogenous	H, M, R, Mk	50 kDa	Rabbit**

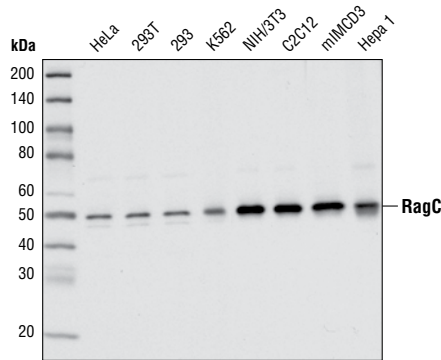
**Background:** mTORC1 kinase complex is a critical component in regulating cell growth (1,2). Its activity is modulated by energy levels, growth factors and amino acids (3,4). Recent studies found that RagA, RagB, RagC and RagD, the four related GTPases, interact with raptor in mTORC1 (1,2). These interactions are both necessary and sufficient for mTORC1 activation in response to amino acid signals (1,2).

**Specificity/Sensitivity:** RagC Antibody detects endogenous levels of total RagC protein.

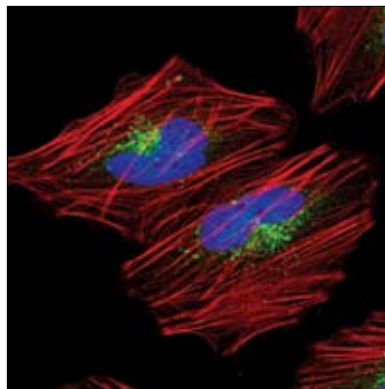
**Source/Purification:** Polyclonal antibodies are produced by immunizing animals with a synthetic peptide (KLH-coupled) derived from the sequence of human RagC protein. Antibodies are purified by protein A and peptide affinity chromatography.

**Background References:**

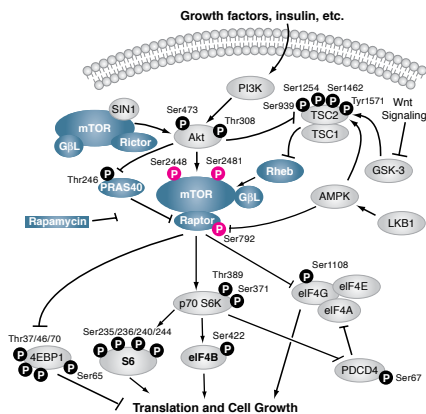
- (1) Sancak, Y. et al. (2008) *Science* 320, 1496–501.
- (2) Kim, E. et al. (2008) *Nat Cell Biol* 10, 935–45.
- (3) Hay, N. and Sonenberg, N. (2004) *Genes Dev* 18, 1926–45.
- (4) Wullschlegel, S. et al. (2006) *Cell* 124, 471–84.



Western blot analysis of extracts from various cell types using RagC Antibody.



Confocal immunofluorescent analysis of HeLa cells using RagC Antibody (green). Actin filaments have been labeled with DY-554 phalloidin (red). Blue pseudocolor = DRAQ5™ (fluorescent DNA dye).



**Entrez-Gene ID** #64121  
**Swiss-Prot Acc.** #Q9HB90

**Storage:** Supplied in 10 mM sodium HEPES (pH 7.5), 150 mM NaCl, 100 µg/ml BSA and 50% glycerol. Store at -20°C. Do not aliquot the antibody.

**\*Species cross-reactivity is determined by Western blot.**

**\*\*Anti-rabbit secondary antibodies must be used to detect this antibody.**

**Recommended Antibody Dilutions:**

Western blotting	1:1000
Immunoprecipitation	1:50
Immunofluorescence (IF-IC)	1:400

**For application specific protocols please see the web page for this product at [www.cellsignal.com](http://www.cellsignal.com).**

**Companion Products:**

- Phospho-PRAS40 (Thr246) Antibody #2640
  - Phospho-mTOR (Ser2481) Antibody #2974
  - Phospho-mTOR (Ser2448) Antibody #2971
  - mTOR Antibody #2972
  - mTOR (7C10) Rabbit mAb #2983
  - GβL Antibody #3227
  - GβL (86B8) Rabbit mAb #3274
  - Rictor Antibody #2140
  - Rictor (53A2) Rabbit mAb #2114
  - mTOR Pathway Antibody Sampler Kit #9964
  - Tris Buffered Saline with Tween 20 (TBST - 10X) #9997
  - BSA #9998
  - Nonfat Dry Milk #9999
  - Phototope®-HRP Western Blot Detection System, Anti-rabbit IgG, HRP-linked Antibody #7071
  - Anti-rabbit IgG, HRP-linked Antibody #7074
  - Prestained Protein Marker, Broad Range (Premixed Format) #7720
  - Biotinylated Protein Ladder Detection Pack #7727
  - 20X LumiGLO® Reagent and 20X Peroxide #7003
- Please visit [www.cellsignal.com](http://www.cellsignal.com) for a complete listing of recommended companion products.**

**IMPORTANT: For Western blots, incubate membrane with diluted antibody in 5% w/v BSA, 1X TBS, 0.1% Tween-20 at 4°C with gentle shaking, overnight.**

**Applications Key:** W—Western IP—Immunoprecipitation IHC—Immunohistochemistry ChIP—Chromatin Immunoprecipitation IF—Immunofluorescence F—Flow cytometry E-P—ELISA-Peptide  
**Species Cross-Reactivity Key:** H—human M—mouse R—rat Hm—hamster Mk—monkey Mi—mink C—chicken Dm—D. melanogaster X—Xenopus Z—zebra fish B—bovine  
 Dg—dog Pg—pig Sc—S. cerevisiae All—all species expected Species enclosed in parentheses are predicted to react based on 100% homology.