

# eIF3H (D9C1) XP™ Rabbit mAb

100 µl  
 (10 western blots)

**Orders** ■ 877-616-CELL (2355)  
 orders@cellsignaling.com  
**Support** ■ 877-678-TECH (8324)  
 info@cellsignaling.com  
**Web** ■ www.cellsignaling.com

rev. 03/16/10

This product is intended for research purposes only. This product is not intended to be used for therapeutic or diagnostic purposes in humans or animals.

Applications	Species Cross-Reactivity*	Molecular Wt.	Source
W, IP, IHC-P, IF-IC Endogenous	H, M, R, Mk	40 kDa	Rabbit IgG**

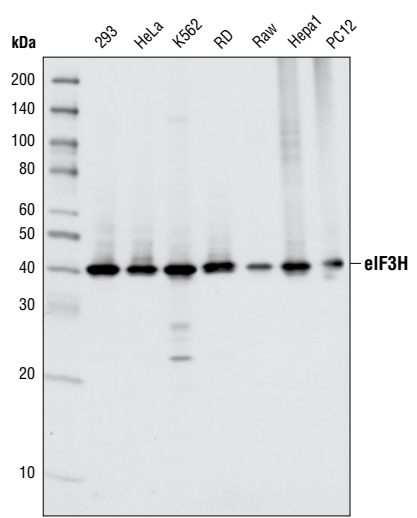
**Background:** Translation initiation requires a set of factors to facilitate the association of the 40S ribosomal subunit with mRNA. The eIF4F complex, consisting of eIF4E, eIF4A and eIF4G, binds to the 5' cap structure of mRNA. eIF4F and eIF4B unwind the secondary structure of mRNA at its 5' untranslated region. The 40S ribosomal subunit, along with some initiation factors including eIF3, then binds to the 5' mRNA cap and searches along the mRNA for the initiation codon. eIF3 is a large translation initiation complex with 10 to 13 different subunits. eIF3a, eIF3b, eIF3c, eIF3e, eIF3f and eIF3h are the core subunits critical for the function of this complex. eIF3 physically interacts with eIF4G, which may be responsible for the association of the 40S ribosomal subunit with mRNA (1). eIF3 also stabilizes the binding of Met-tRNA<sup>f</sup>.eIF2.GTP to the 40S ribosomal subunit and helps keep the integrity of the resulting complex upon addition of the 60S ribosomal subunit (2). Studies have shown that mTOR interacts with eIF3 directly (3,4). When cells are stimulated by hormones or mitogenic signals, mTOR binds to the eIF3 complex and phosphorylates S6K1 (3). This process results in the dissociation of S6K1 from eIF3 and S6K1 activation. The activated S6K1 then phosphorylates its downstream targets including ribosomal protein S6 and eIF4B resulting in stimulation of translation. Further findings demonstrated that activated mTOR signaling induces the association of eIF3 with eIF4G upon stimulation with insulin (3).

**Specificity/Sensitivity:** eIF3H (D9C1) XP™ Rabbit mAb detects endogenous levels of total eIF3H protein.

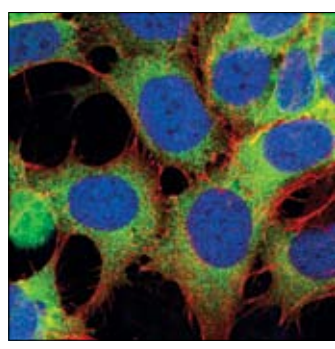
**Source/Purification:** Monoclonal antibody is produced by immunizing animals with a synthetic peptide corresponding to the sequence of human eIF3H.

**Background References:**

- Masutani, M. et al. (2007) *EMBO J* 26, 3373–83.
- Chaudhuri, J. et al. (1999) *J Biol Chem* 274, 17975–80.
- Holz, M.K. et al. (2005) *Cell* 123, 569–80.
- Harris, T.E. et al. (2006) *EMBO J* 25, 1659–68.



Western blot analysis of extracts from various cell types using eIF3H (D9C1) XP™ Rabbit mAb.



Confocal immunofluorescent analysis of SK-N-MC cells using eIF3H (D9C1) XP™ Rabbit mAb (green). Actin filaments have been labeled with DY-554 phalloidin (red). Blue pseudocolor = DRAQ5® #4084 (fluorescent DNA dye).

**Entrez-Gene ID** #8667  
**Swiss-Prot Acc.** #O15372

**Storage:** Supplied in 10 mM sodium HEPES (pH 7.5), 150 mM NaCl, 100 µg/ml BSA, 50% glycerol and less than 0.02% sodium azide. Store at -20°C. Do not aliquot the antibody.

**\*Species cross-reactivity is determined by western blot.**

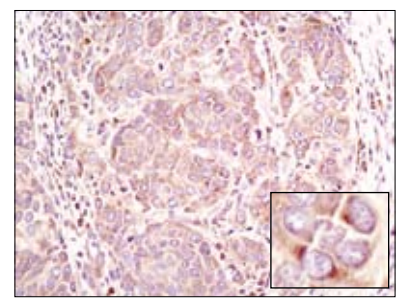
**\*\*Anti-rabbit secondary antibodies must be used to detect this antibody.**

**Recommended Antibody Dilutions:**

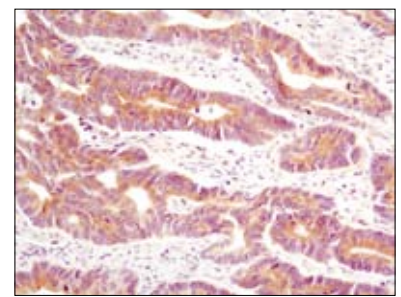
Western blotting	1:1000
Immunoprecipitation	1:50
Immunohistochemistry (Paraffin)	1:1600
Unmasking buffer:	Citrate
Antibody diluent:	SignalStain® Antibody Diluent #8112
Immunofluorescence (IF-IC)	1:400

**For application specific protocols please see the web page for this product at [www.cellsignaling.com](http://www.cellsignaling.com).**

**Please visit [www.cellsignaling.com](http://www.cellsignaling.com) for a complete listing of recommended companion products.**



Immunohistochemical analysis of paraffin-embedded human breast carcinoma using eIF3H (D9C1) XP™ Rabbit mAb.



Immunohistochemical analysis of paraffin-embedded human colon carcinoma using eIF3H (D9C1) XP™ Rabbit mAb

**IMPORTANT: For western blots, incubate membrane with diluted antibody in 5% w/v BSA, 1X TBS, 0.1% Tween-20 at 4°C with gentle shaking, overnight.**

DRAQ5® is a registered trademark of Biostatus Limited.

**Applications Key:** W—Western IP—Immunoprecipitation IHC—Immunohistochemistry ChIP—Chromatin Immunoprecipitation IF—Immunofluorescence F—Flow cytometry E-P—ELISA-Peptide  
**Species Cross-Reactivity Key:** H—human M—mouse R—rat Hm—hamster Mk—monkey Mi—mink C—chicken Dm—D. melanogaster X—Xenopus Z—zebrafish B—bovine  
 Dg—dog Pg—pig Sc—S. cerevisiae Ce—C. elegans Hr—Horse All—all species expected Species enclosed in parentheses are predicted to react based on 100% homology.