

#3420 Store at -20°C

# Mouse IgG (Sephacrose Bead Conjugate)



✓ 400 µl  
(40 immunoprecipitations)

**Orders** ■ 877-616-CELL (2355)  
orders@cellsignal.com  
**Support** ■ 877-678-TECH (8324)  
info@cellsignal.com  
**Web** ■ www.cellsignal.com

rev. 08/17/10

This product is intended for research purposes only. This product is not intended to be used for therapeutic or diagnostic purposes in humans or animals.

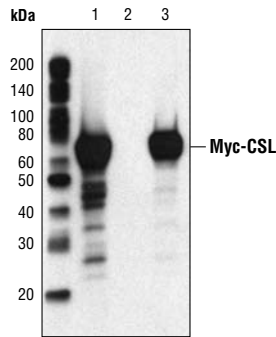
Applications	Isotype
IP	Mouse IgG

**Description:** This Cell Signaling Technology normal mouse IgG (whole molecule) containing predominantly IgG1 and IgG2a isotypes and small amounts of IgG2b and IgG3 is immobilized via covalent binding of primary amino groups to N-hydroxysuccinimide (NHS)-activated sepharose beads. Mouse IgG (Sephacrose Bead Conjugate) is useful to determine non-specific immunoprecipitation complexes.

**Background:** Control antibodies are used to estimate the non-specific binding of target primary antibodies due to F<sub>c</sub> receptor binding or other protein-protein interactions.

**Specificity/Sensitivity:** Normal mouse IgG is not expected to recognize any specific antigen.

**Source/Purification:** Normal mouse IgG was isolated by affinity chromatography from naive mouse serum.



Western blot analysis of extracts from COS cells transfected with Myc-Chorionic Somatomammotropin Hormone-Like 1 (CSL) protein (lane 1). Immunoprecipitation of transfected COS lysates with Mouse IgG (Sephacrose Bead Conjugate) (lane 2) or Myc-Tag (9B11) (Sephacrose Bead Conjugate) Mouse mAb #3400 (lane 3). Blot was probed with Myc Tag (71D10) Rabbit mAb #2278.

**Storage:** Supplied in 10mM sodium HEPES (pH 7.5), 150 mM NaCl, 100 µg/ml BSA, 50% glycerol and less than 0.02% sodium azide. Store at -20°C. Do not aliquot the antibody.

**Directions for Use:** Add 10 µl of well-vortexed beads to 200 µl of cell lysate at 1 mg/ml in 1X Cell Lysis Buffer (10X) #9803. See protocol for more details.

For application specific protocols please see the web page for this product at [www.cellsignal.com](http://www.cellsignal.com).

Please visit [www.cellsignal.com](http://www.cellsignal.com) for a complete listing of recommended companion products.